

Uttern S64 eksklusive model year 2005

Parts catalogue



Revision history

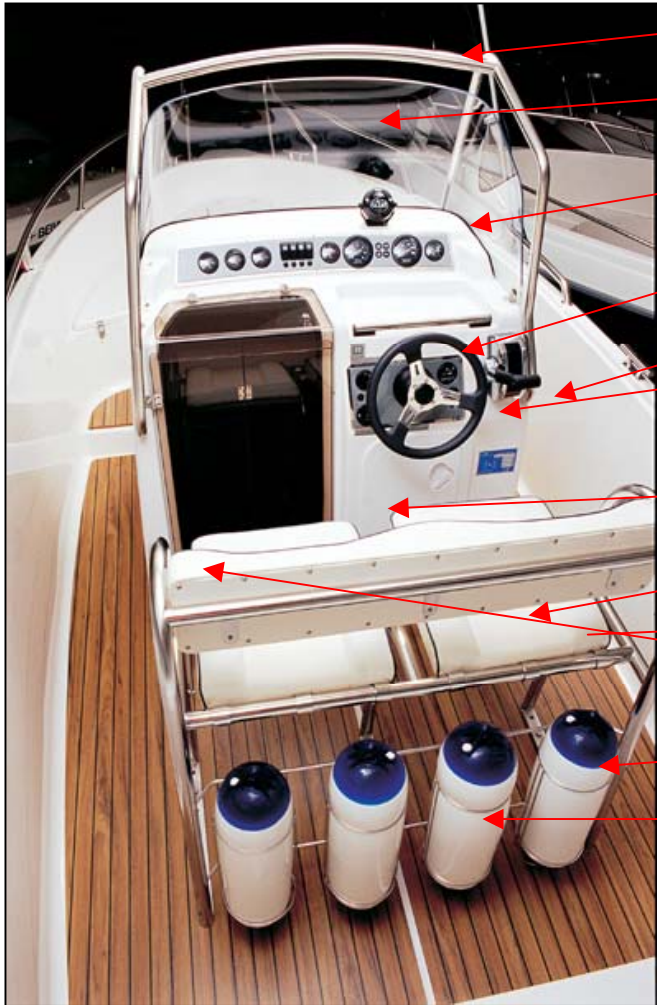
2003-12-12 First release

2004-12-23 Update for 2005 ready

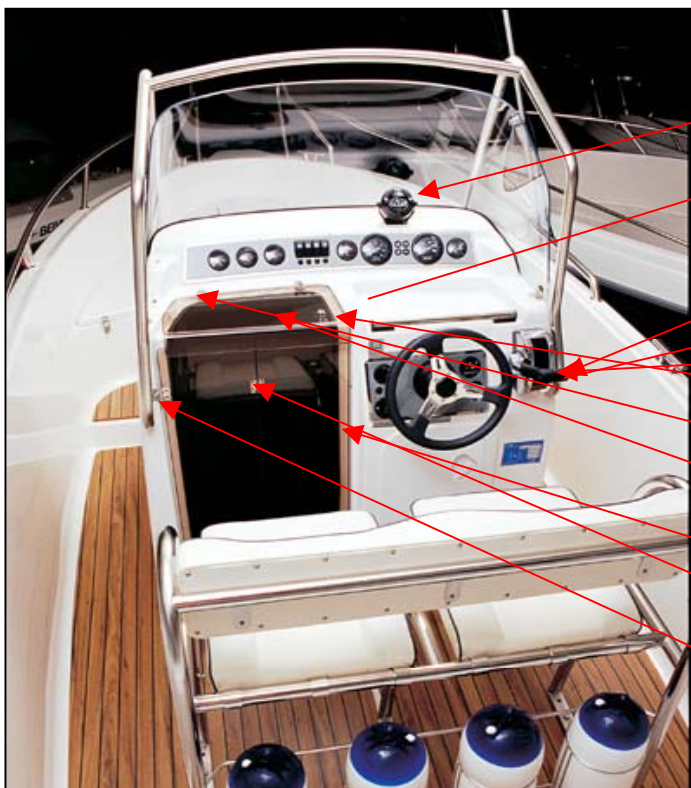


Uttern S64 exklusive model year 2005

Cabin and steering panel

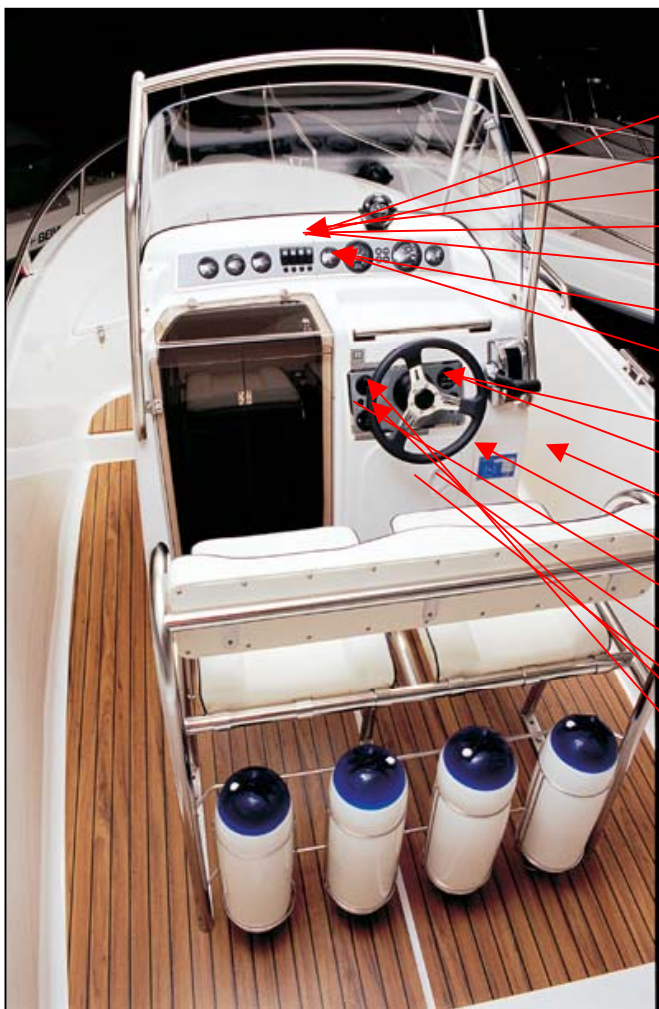


UTE 872893	BOW WINDSCREEN S64/6402	1 PC
UTE 872917	WINDSCREEN S64/6402 ONLY GLASS	1 PC
UTE 874252	INSTRUMENT PANEL S64 MPI UPPER	1 PC
UTE 874253	INSTRUMENT PANEL S64 MPI LOWER	1 PC
UTE 874499	STEERING PANEL S64 MPI -05	1 PC
UTE 874291	STEERING WHEEL 1073 SS/GREY	1 PC
UTE 872870	BASE DRIVERSEAT S64/6402 ONLY SS	1 PC
UTE 872900	DRIVER SEAT S64/6402 ONLY CUSHIONS	1 PC
UTE 872900-1	DRIVER SEAT S64/6402 ONLY BACKREST	1 PC
UTE 873014	LOCK PLATE SS S64/6402 DRIVERSEAT	2 PC
UTE 872900-2	DRIVER SEAT S64/6402 ONLY SEAT CUSHIOI	1 PC
UTE 872940	FENDER BASKET 170 MM	4 PC
UTE 871696	FENDER 15X63 CM WHITE F-1	4 PC
UTE 874537	NAVMAN PRERIG. KIT TRACKER 5500I	1 PC
UTE 871287	HANGING FUSE 20A	1 PC
UTE 871350	FUSE 1A	1 PC



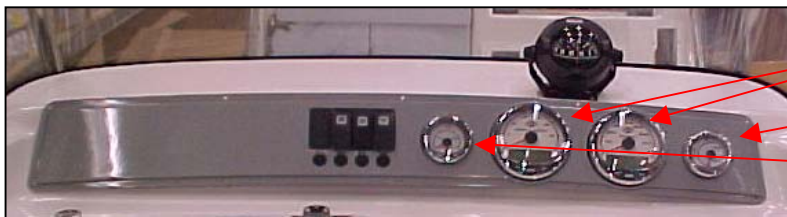
UTE 873484	COMPASS SILVA 70B BLACK	1 PC
UTE 874501	DRINKHOLDER SS	2 PC
Q/S 883711A13	REMOTE CONTROL TOP MOUNTED MCM	1 PC
Q/S 883720A16	CABLE ASSY II 16 FT PLATINUM	1 PC
Q/S 883720A18	CABLE ASSY II 18 FT PLATINUM	1 PC
UTE 871827	HATCH LOCK ABLOY	1 PC
UTE 871244	HINGE 47X30 3+3	2 PC
UTE 872874	LOCK DOOR S64/6402 PLEXIGLASS	1 PC
UTE 872873	DOOR S64/6402 PLEXIGLASS	1 PC
UTE 871242	HINGE 38X37 2+2	2 PC
UTE 871245	HINGE 59X37 3+2	2 PC
UTE 873692	HATCH ADJUSTER	1 PC





UTE 871336	MAIN SWITCH ON-OFF WITHOUT PUSH-BOTT	4 PC
UTE 873473	SWITCH BILGE PUMP	1 PC
UTE 871339	SWITCH NAVIGATION LIGHTS	1 PC
UTE 871337	SWITCH ENGINE BLOWER	1 PC
UTE 873844	SWITCH COVER CARLING SWITCH	1 PC
UTE 871341	FRAME FOR EL PANEL SIDE	2 PC
UTE 871342	FRAME FOR EL PANEL MIDDLE	2 PC
UTE 874488	STEERING HELM QC SAFE-T	1 PC
UTE 874489	BEXEL QC SAFE-T	1 PC
UTE 871405	CE-PLATE UTTERN	1 PC
UTE 873465	INSPECTION LID 355X600 NOVARADE	1 PC
UTE 872147	U-TRIM WITH SIDE TIGHTENING	3,0 M
UTE 873637	FIRE EXTINGUISHER GLORIA 2 KG	1 PC
UTE 873636	FIRE EXTINGUISHER PRIMEX 2 KG	1 PC
UTE 873270	EMERGENCY STOP SWITCH	1 PC
Q/S 54212A7	IGNITION SWITCH	1 PC





Q/S 879899K11	TACH/SPEEDO-WHITE SMARTCRAFT	1 PC
Q/S 8590743	FUEL TANK 6.6 GALLON/25L	2 PC
Q/S 879914K11	TRIM-WHITE SMARTCRAFT	1 PC
Q/S 8798713	BEZEL-52 MM CROME	2 PC
Q/S 879910K11	FUEL LEVEL-WHITE SMARTCRAFT	1 PC

Not in picture:

Q/S 864218	HARNESS ASSY FUEL TANK SMARTCRAFT	1 PC
Q/S 879981T20	HARNESS ASSY SC1000R-20 6,1 M	1 PC
Q/S 859318T1	RESISTOR SMARTCRAFT	1 PC
Q/S 883090	SENSOR-SPEED/TEMPERATURE	1 PC
Q/S 812475A3	HARNESS ASSY	1 PC
Q/S 812441A15	EXTENSION HARNESS ENGINE 4,57 M	1 PC
Q/S 817659A1	TRIM HARNESS ASSY	1 PC
UTE 874263	CABLE SYSTEM S64 MPI PANEL	1 PC
UTE 874264	CABLE SYSTEM S64 MPI PANEL	1 PC
UTE 874365	BATTERY MAIN SWITCH S64	1 PC
UTE 874539	HARNESS EXTENSION TRIM PUMP	1 PC
UTE 874537	NAVMAN PRERIG. KIT TRACKER 5500I	1 PC

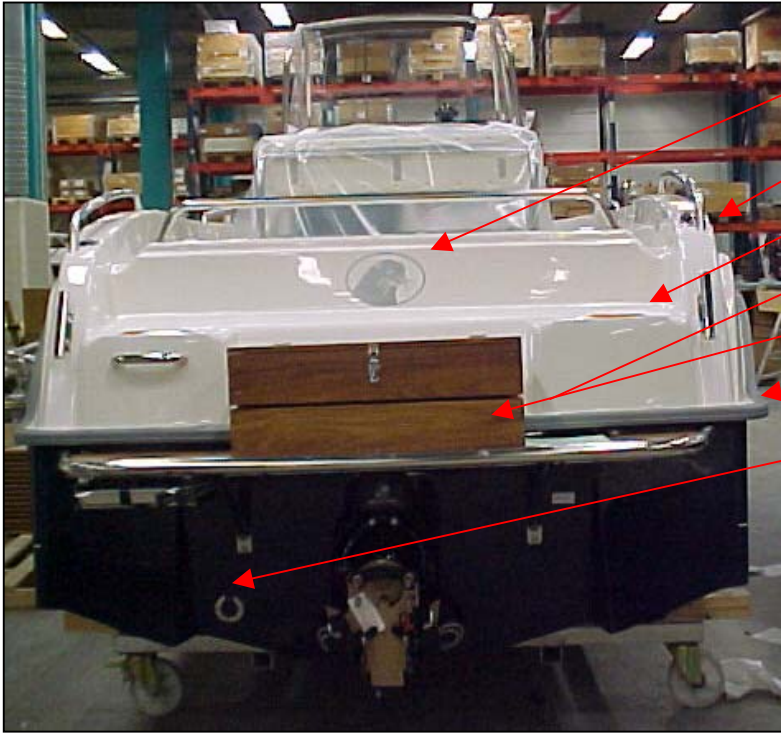


Uttern S64 exklusive model year 2005

Aft



UTE 872890	RAIL AFT IN THE MIDDLE S64	1 PC
UTE 871702	FLAG HOLDER ATTACHMENT SS	1 PC
UTE 871242	HINGE 38X37 2+2	1 PC
UTE 871694	ECCENTRIC LOCK ADJUSTABLE	1 PC
UTE 871821	LOCK FITTINGS FOR ECCENTRIC LOC	1 PC
UTE 870581	HATCH STRAP 0,4 M	1 PC
UTE 871758	HANDLE SS 200 MM	1 PC
UTE 874325	BATHING PLATFORM -04 S64 SS LADD	1 PC
UTE 873775	BOARDING LADDER 3-STEP TELESCO	1 PC

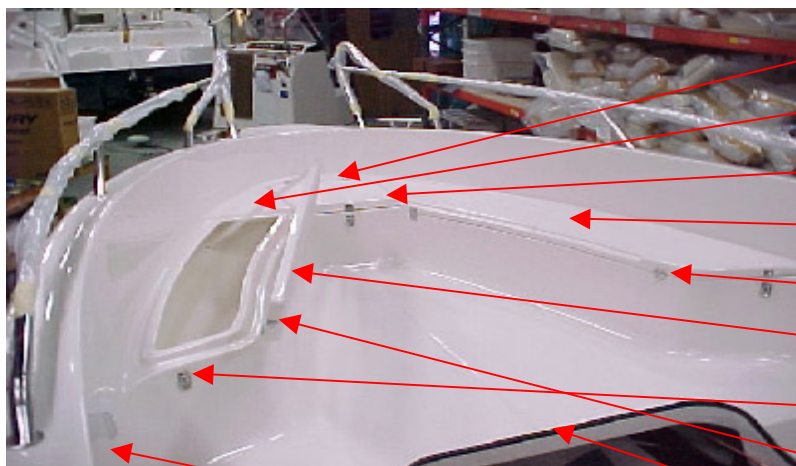


- | | | |
|------------------------------|----------------------------------|------|
| UTE 873497 | DECAL UTTERN HEAD SILVER VERY B | 1 PC |
| Q/S 829624 | PLUG-IN BASE | 1 PC |
| UTE 871706 | FOOT-REST SS/TEAK 57X195 | 2 PC |
| UTE 871897
not in picture | GUNNEL FITTINGS SS 263 BURNISHED | 1 PC |
| UTE 872973 | ANCHOR BOX TEAK S64 | 1 PC |
| UTE 873386 | GUNNEL RUBBER 632 15 M SILVER-RE | 1 PC |
| UTE 871642 | ANTI-SYPHONE VALVE SELF-BAILING | 1 PC |



Uttern S64 eksklusive model year 2005

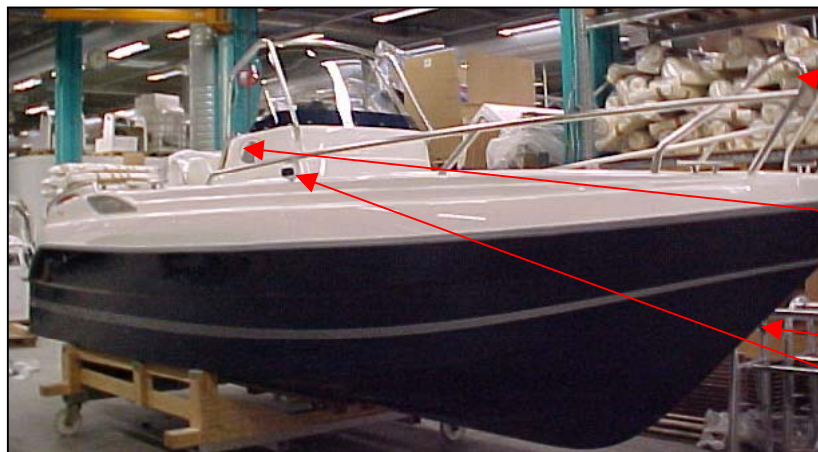
Seats fore



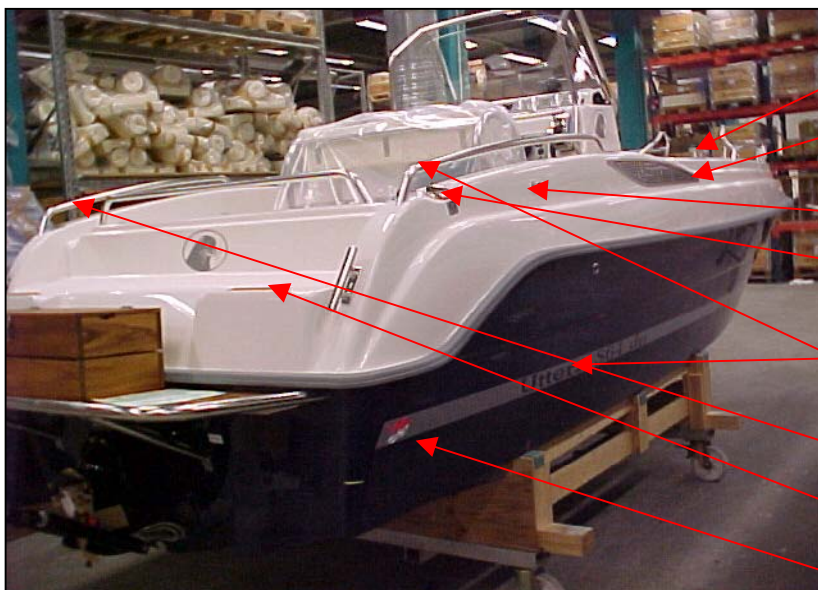
UTE 871251	HINGE 74X39 2+2	2 PC
UTE 872897	POLYESTER STRAP WHITE 25 MM	1,0 M
UTE 873107	HATCH 107	1 PC
UTE 873105	HATCH 105	1 PC
UTE 871245	HINGE 59X37 3+2	7 PC/BOAT
UTE 873104	HATCH 104	1 PC
UTE 871692	ECCENTRIC LOCK CHROME/BRASS	3 PC
UTE 871820	LOCK FITTINGS CHROME/BRASS	3 PC
UTE 872147	U-TRIM WITH SIDE TIGHTENING	9,0 M
UTE 872000	LOUVER 90X90V	2 PC

Uttern S64 exklusive model year 2005

Starboard side



- UTE 872889 BOWRAIL FORE S64/6402 PORT 1 PC
- UTE 872888 BOWRAIL FORE S64/6402 SB 1 PC
- UTE 873469 BOWEYE CLASS 3 12 MM LOCK NL 1 PC
- UTE 873497 DECAL UTTERN HEAD SILVER VEF 2 PC
- UTE 874518 NAVIGATIONS LIGHT 12 M RED CR 1 PC
not in picture
- UTE 871936 BOW EYE 12 MM SS 1 PC
- UTE 874519 NAVIGATIONS LIGHT 12 M GREEN 1 PC

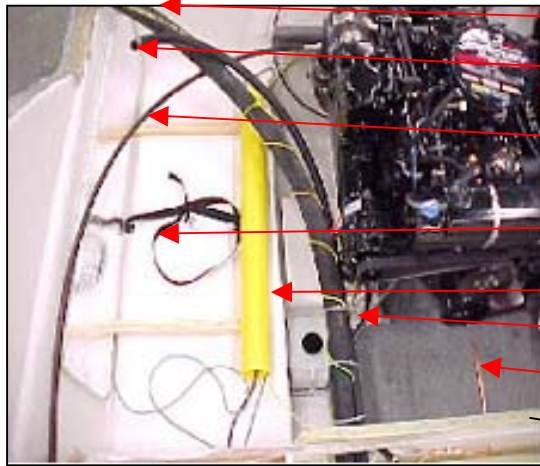


- UTE 873463 CLEAT 205X55 MM 6 PC/BOAT
- UTE 874529 VENTILATION GRID SB 1 PC
- UTE874530 ACCESSORY BAG COM 1 PC
not in picture
- UTE 872989 FUEL TANK VENT ATTWOOD 1 PC
- UTE 873427 DECKFILL DIESEL SS 38 MM 1 PC
- UTE 874042 STREIP "S64 DTI" SILVER 1 PAIR
- UTE 872891 BOWRAIL AFT S64/6402 SB 1 PC
- UTE 872892 BOWRAIL AFT S64/6402 PORT 1 PC
- UTE 872934 FOOT-REST SS/TEAK 85X210 2 PC
- UTE 873539 DECAL "BY M" LARGE MODEL 2 PC

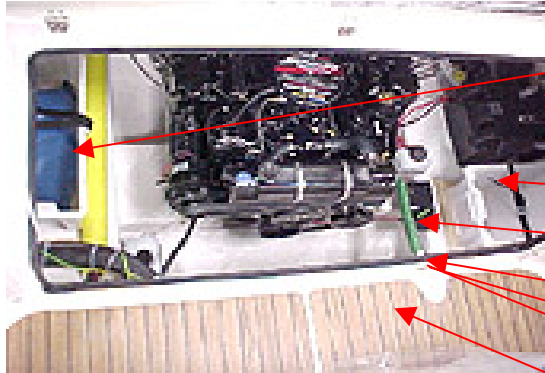


Uttern S64 eksklusive model year 2005

Seats aft/engine hatch

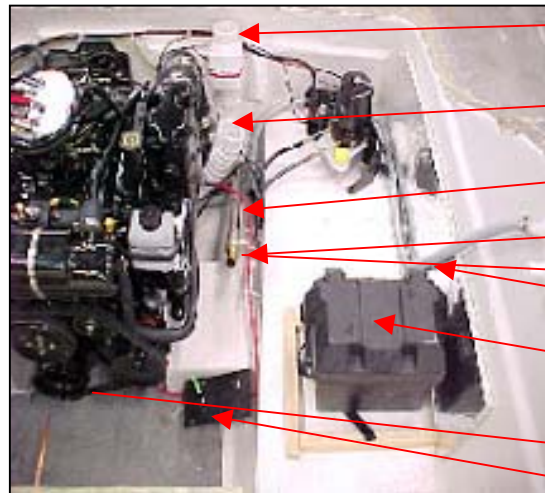


UTE 873036	FUEL HOSE 38MM A1	1,6 M
UTE 873260	FUEL HOSE 16MM A1	2,35 M
UTE 870783	STEERING CABLE 4.75 D335	1 PC
UTE 870602	TANK STRAP 1,5 M	3 PC
UTE 871333	PVC-TUBE 75/69 MM	1 PC
UTE 873261	FUEL HOSE 10MM A1	0,45 M
UTE 871620	COPPER TUBE 8X0,8	3,15 M
UTE 873417	FUEL TANK 190 L SS WITH SENDING U	1 PC



UTE 872887	PLASTIC BOX WHITE 600X400X350	1 PC
UTE 871851	BILGE PUMP MANUAL URSIN	1 PC
UTE 872177	HOSE 25 MM BLUE (BAILING PUMP)	4,0 M
UTE 872886	PLASTIC BOX WHITE 400X300X220	1 PC
UTE 872178	HOSE 32 MM SELF BAILING	0,52 M
UTE 871612	THRU HULL FITTINGS 1" CONVEX	1 PC
UTE 871632	HOSE ADAPTER 1" 32 MM HOSE	1 PC
not in picture		
UTE 871629	TUBE SOCKET 1"	1 PC
not in picture		
UTE 872970	LAMINATE FLOOR S64	1 PC

Not in picture:
 UTE 872970001 LAMINATE FLOOR S64 - FORE ONLY 1 PC
 UTE 872970002 LAMINATE FLOOR S64 - AFT ONLY 1 PC



UTE 871857	FAN MOTOR COMPARTMENT	1 PC
UTE 872182	HOSE 75 MM GREY 6 M	2,0 M
UTE 871172	BAILING TUBE	1 PC
UTE 871622	SHUT OFF VALVE 1"	1 PC
UTE 871632	HOSE ADAPTER 1" 32 MM HOSE	1 PC
UTE 872176	HOSE 19 MM GREY FOLDED	2,3 M
UTE 871650	BATTERY BOX	1 PC
UTE 873400	BILGE PUMP 500 FULLY AUTOMATIC	1 PC
UTE 872704	MAIN POWER SWITCH GASTÄTISO 884	1PC

Additional information

Documents

UTE 871559	DECAL SET ALU-COLOURED W.BLACK PRINT	1 PC
UTE 870547	FOLDER WITH ZIPPER	1 PC
UTE 873262	USER MANUAL SWEDISH	1 PC
Q/S 88285504U	POLY BOAT OG SUP UTTERN	1 PC
Q/S 8828553WU	UTTERN WARRANTY SUPPLEMENT	1 PC
Q/S 83004243	WARRANTY CARD	1 PC

UTE-D9054	ACCESSORY BAG COMPLETE	1 PC
------------------	------------------------	------

Parts in bag

UTE 873381	ANCHOR 10 KG	1 PC
UTE 871224	ANCHOR ROPE 35MX12MM	1 PC
UTE 873389	MOORING ROPE 4MX14MM	1 PC
UTE 873390	MOORING ROPE 10MX14MM	1 PC
UTE 871226	FENDER LINE 4x1,5MT	1 PC
UTE 871955	ACCESSORY BAG	1 PC
UTE 874290	UTTERN BAG	1 PC

UTE 873481	CANVAS DRIVER SEAT S64 BLUE 2-PIECES	1 PC
UTE 871878	PADDLE 140 CM	1 PC
Q/S 829719	ALL- ROUND POLE LIGHT 122	1 PC
UTE 871788	CLOTH HOOK	1 PC
UTE 871961	PORTA POTTI -345	1 PC
UTE 872235	LIGHT ROUND 153 MM CHROME	2 PC
UTE 872933	PORT LIGHTS 322X173	1 PC
Q/S 13702A46	PROPELLER 14 3/4R21 RH SS MIRAGE	1 PC
UTE 872899	CUSHIONS CABIN S64/6402 BLUE	1 PC
UTE 874291	STEERING WHEEL 1073 SS/GREY	1 PC
UTE 871690	SOCKET 12V FLUSH	1 PC
UTE 872902	FOOT-REST S64 UNDER STEERING PANEL	1 PC

