

Uttern S55 outboard model year 2009

Parts catalogue



Revision history

2003-12-12 First release

2004-12-23 Update for 2005 ready

2005-12-14 Update for 2006 ready

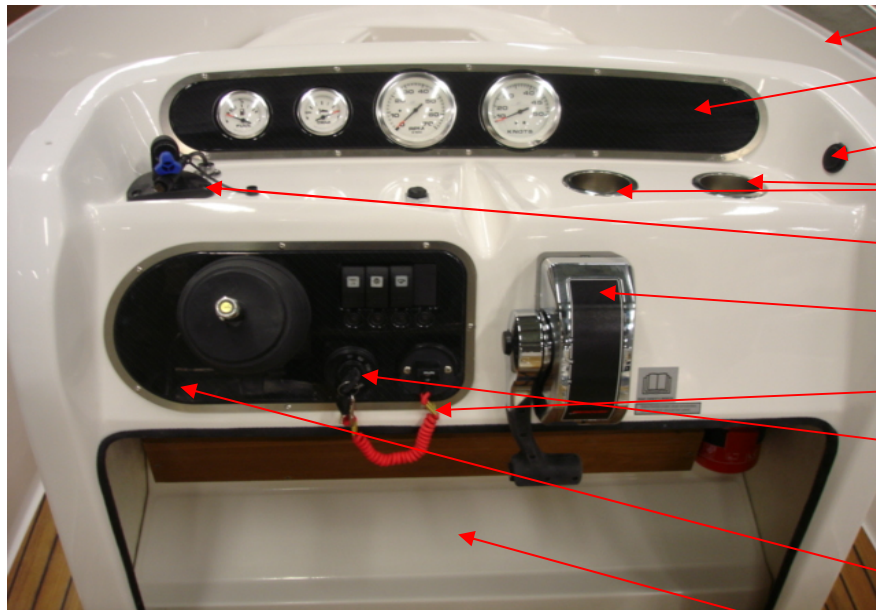
2007-02-07 Update for 2007 ready

2008-04-17 Update for 2008 ready

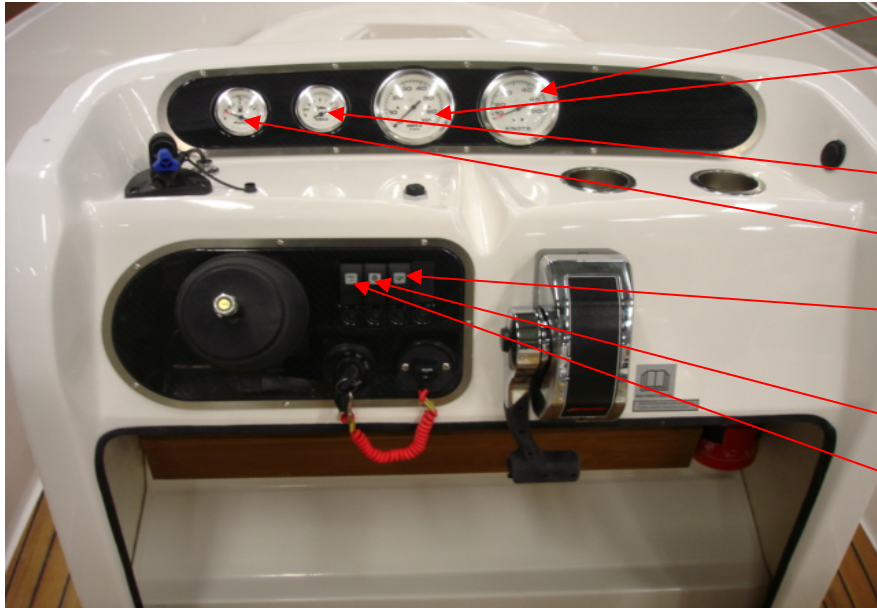
2009-02-05 Update for 2009 ready

Uttern S55 outboard model year 2009

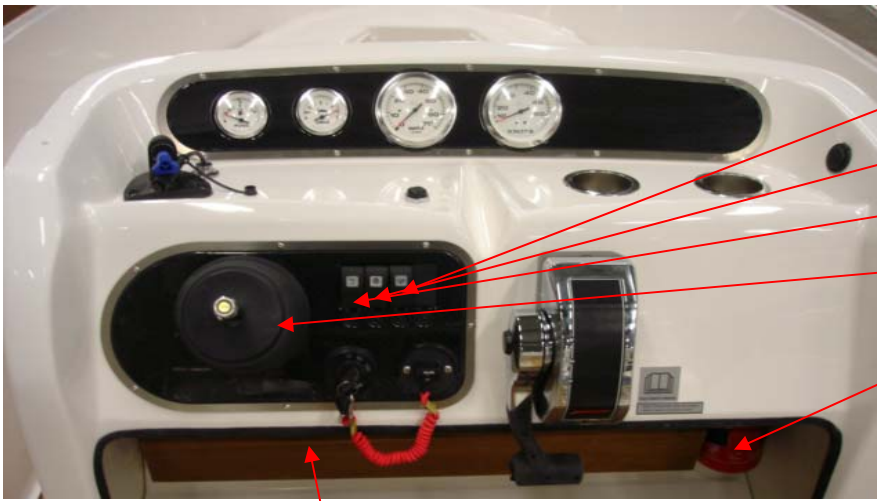
Steering panel



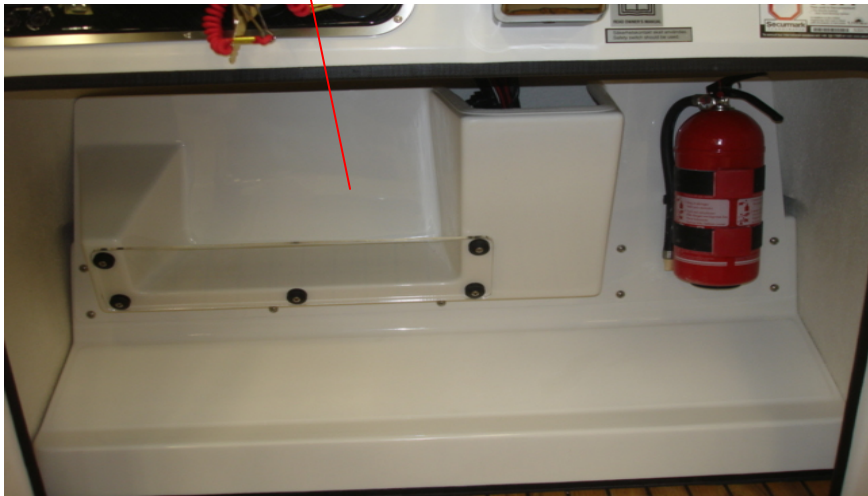
UTE 877121	UPHOLSTERY D/T55 IB BLUE AFT	1 PC
UTE 874809	ANCHORBOX 55 IB TEAK COMPL.	1 PC
UTE 873748	SOCKET 12V ROUND FLUSH BLAC S	1 PC
UTE 874501	DRINKHOLDER SS	2 PC
UTE 874537	NAVMAN PRERIG. KIT TRACKER 5500I	1 PC
Q/S 883711A12	REMOTE CONTROL TOP MOUNTED	1 PC
UTE 873270	EMERGENCY STOP SWITCH	1 PC
Q/S 816626A15	IGNITION SWITCH	1 PC
Q/S 896537K15	HARNESS ASY & KEY SWITCH 15FT	1 PC
Q/S 893353A03	KEY SWITCH KIT	1 PC
Q/S 892990T01	HARNESS ASY-ANALOG GAUGE 5FT	1 PC
UTE 877136	INSTRUMENTP. LOWER S55 08-	1 PC
UTE 872814	FOOTREST	1 PC



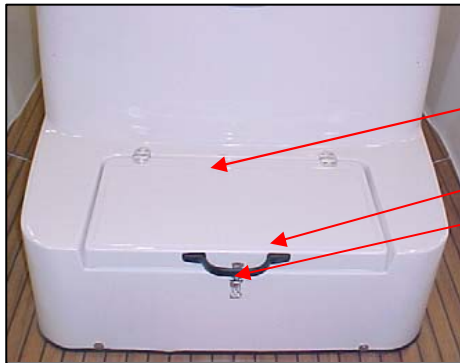
- UTE 873300 GAUGE-SPEEDOMETER CHROME/WHITE 1 PC
- UTE 873301 GAUGE-TACHOMETER CHROME/WHITE 1 PC
- UTE 873268 HARNESS KIT Q/S 1 PC
not in picture
- UTE 873303 POWER TRIM GAUGES CHROME/WHITE 1 PC
- UTE 873302 FUEL GAUGE CHROME/WHITE 1 PC
- UTE 873473 SWITCH BILGE PUMP 1 PC
- UTE 873474 MAIN SWITCH (ON)-OFF BILGE PUMP 1 PC
not in picture
- UTE 871339 SWITCH NAVIGATION LIGHTS 1 PC
- UTE 873315 SWITCH INSTRUMENT LIGHTING 1 PC
- UTE 871336 SWITCH ON-OFF 1 PC
not in picture
- UTE 874406 MAIN SWITCH OFF-ON-ON 1 PC
not in picture



- UTE 874289 CIRCUIT BREAKER 16A 1 PC
- UTE 874288 CIRCUIT BREAKER 10A 1 PC
- UTE 874287 CIRCUIT BREAKER 5A 1 PC
- UTE 874408 HELM PUMP BAYSTAR 1 PC
- UTE 873637 FIRE EXTINGUISHER GLORIA 2 KG 1 PC
- UTE 874368 HARNESS SWITCH PANEL 1 PC
not in picture
- UTE 874009 MAIN CABLE SYSTEM S56 1 PC
not in picture



UTE 877123 GLOVE COMPARTMENT S55 1 PC

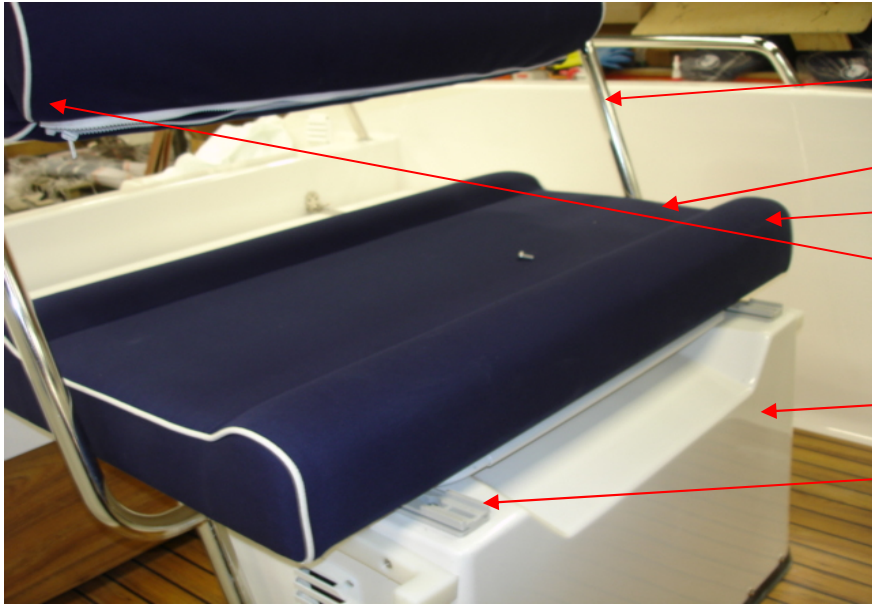


UTE 872815 HATCH S56 STEERING PANEL 1 PC

UTE 877278 GRABHANDLE BLACK/PLASTIC 1 PC

UTE 871694 ECCENTRIC LOCK ADJUSTABLE 1 PC

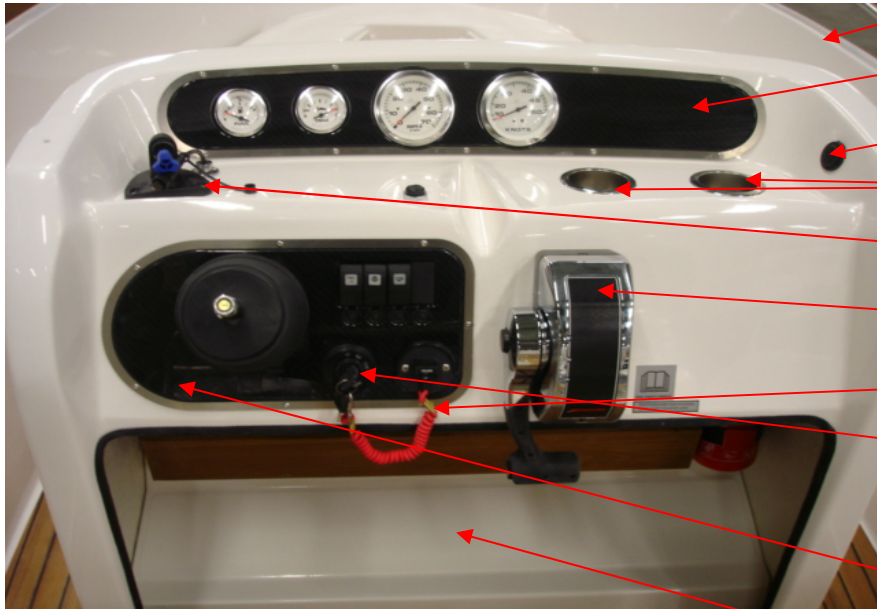
UTE 871821 LOCK FITTINGS FOR ECCENTRIC LOCK W. HOL 1 PC



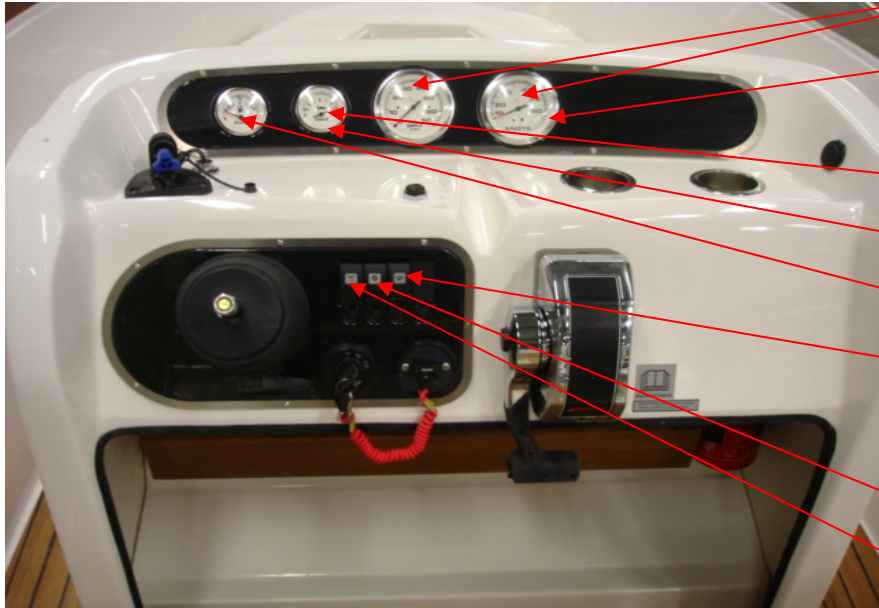
UTE 870651	BOW SEAT SS S52/S56 BACK	1 PC
UTE 875161	SEAT S52/S55 BLUE CUSHIONS	1 PC
UTE 875161-1	SEAT ONLY S52/S55 BLUE	1 PC
UTE 875161-2	BACKREST ONLY S52/S55 BLUE	1 PC
UTE 873465 not in picture	INSPECTION LID 355X600 NOVARADE	1 PC
UTE 874631	SEAT BOX	1 PC
UTE 874630	SEAT SLIDER	1 PC

Uttern S55 outboard model year 2009

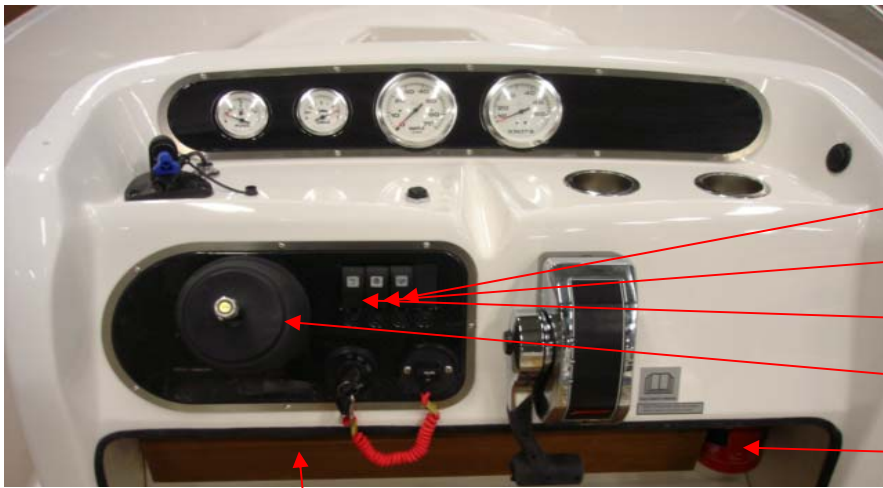
Steering panel



UTE 877122	STEERING CONSOLE S55 SC 08-	1 PC
UTE 874809	ANCHORBOX 55 IB TEAK COMPL.	1 PC
UTE 873748	SOCKET 12V ROUND FLUSH BLAC S	1 PC
UTE 874501	DRINKHOLDER SS	2 PC
UTE 874537	NAVMAN PRERIG. KIT TRACKER 5500I	1 PC
Q/S 883711A12	REMOTE CONTROL TOP MOUNTED	1 PC
UTE 873270	EMERGENCY STOP SWITCH	1 PC
Q/S 816626A15	IGNITION SWITCH	1 PC
Q/S 896537K15	HARNESS ASY & KEY SWITCH 15FT	
Q/S 893353A03	KEY SWITCH KIT	
UTE 877136	INSTRUMENTP. LOWER S55 08-	1 PC
UTE 872814	FOOTREST	1 PC



- Q/S 879899K11 TACH/SPEEDO-WHITE SMARTCRAFT 1 PC
- Q/S 8590743 BEZEL-85 MM CROME 2 PC
- UTE 873268 HARNESS KIT Q/S 1 PC
not in picture
- Q/S 879914K11 TRIM-WHITE SMARTCRAFT 1 PC
- Q/S 8798713 BEZEL-52 MM CROME 2 PC
- Q/S 879910K11 FUEL LEVEL-WHITE SMARTCRAFT 1 PC
- UTE 873473 SWITCH BILGE PUMP 1 PC
- UTE 873474 MAIN SWITCH (ON)-OFF BILGE PUMP 1 PC
not in picture
- UTE 871339 SWITCH NAVIGATION LIGHTS 1 PC
- UTE 873844 SWITCH COVER CARLING SWITCH 1 PC
- UTE 871336 SWITCH ON-OFF 1 PC
not in picture



- UTE 874289 CIRCUIT BREAKER 16A 1 PC
- UTE 874288 CIRCUIT BREAKER 10A 1 PC
- UTE 874287 CIRCUIT BREAKER 5A 1 PC
- UTE 874408 HELM PUMP BAYSTAR 1 PC
- UTE 873637 FIRE EXTINGUISHER GLORIA 2 KG 1 PC



UTE 874261 CABLE SYSTEM S56OPTI PANEL 1 PC

not in picture

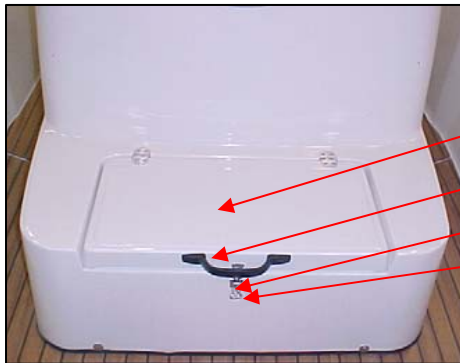
UTE 874009 MAIN CABLE SYSTEM S56 1 PC

Q/S 879982T20 HARNESS ASSY SC1000-2RSL-20 1 PC

Q/S 859743T2 HARNESS ASSY BOAT INSTRUMENTS 1 PC

UTE 874444 WASHER FOR TEMPESENSOR 20X35 1 PC

UTE 877123 GLOVE COMPARTMENT S55 1 PC

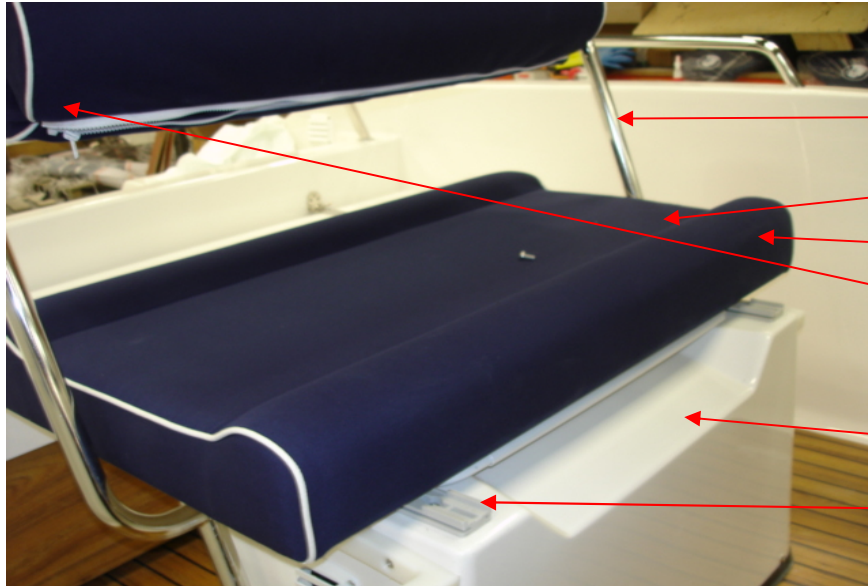


UTE 872815 HATCH S56 STEERING PANEL 1 PC

UTE 877278 GRABHANDLE BLACK/PLASTIC 1 PC

UTE 871694 ECCENTRIC LOCK ADJUSTABLE 1 PC

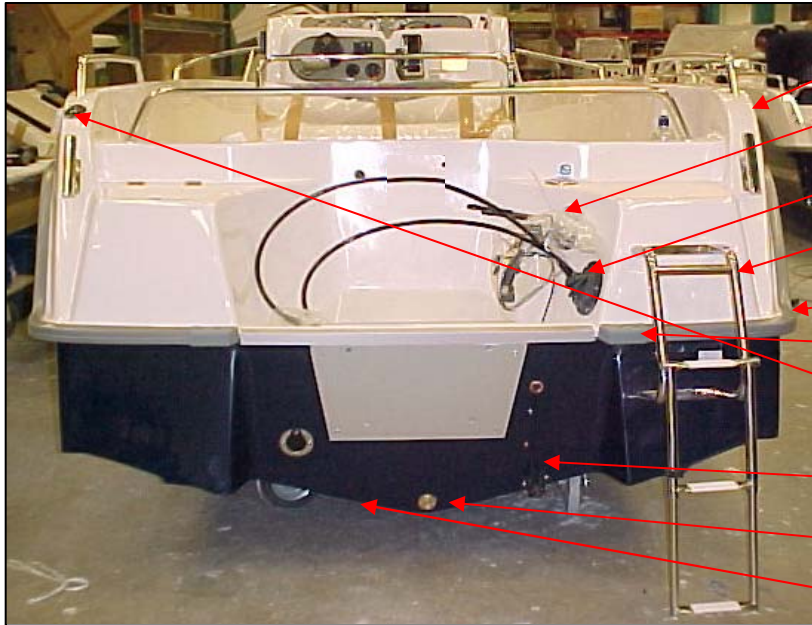
UTE 871821 LOCK FITTINGS FOR ECCENTRIC LOCK W. HOL 1 PC



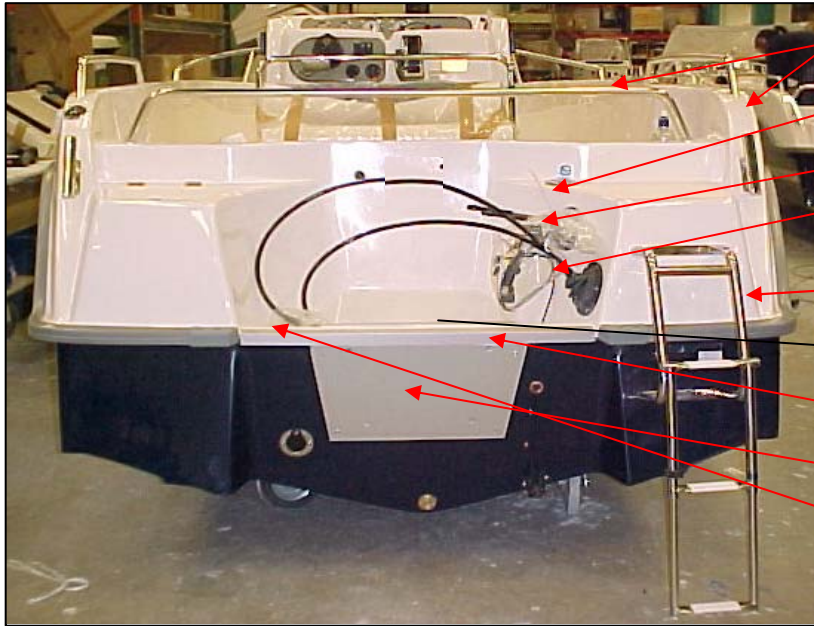
UTE 870651	BOW SEAT SS S52/S56 BACK	1 PC
UTE 875161	SEAT S52/S55 BLUE CUSHIONS	1 PC
UTE 875161-1	SEAT ONLY S52/S55 BLUE	1 PC
UTE 875161-2	BACKREST ONLY S52/S55 BLUE	1 PC
UTE 873465 not in picture	INSPECTION LID 355X600 NOVARADE	1 PC
UTE 874631	SEAT BOX	1 PC
UTE 874630	SEAT SLIDER	1 PC

Uttern S55 outboard model year 2009

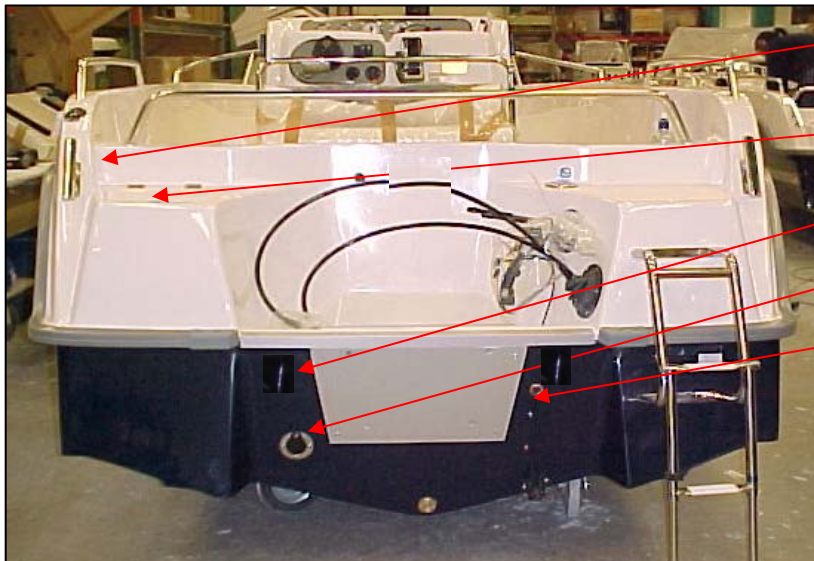
Aft



- | | | |
|------------|---------------------------------------|------|
| UTE 875119 | ROUND BASE FOR POLE WHITE | 1 PC |
| UTE 871770 | CABLE BUSHING FOR BOOT HOP100 MM | 1 PC |
| UTE 871771 | CABLE BUSHING FOR BOOT 140 MM OUTSIDE | 1 PC |
| UTE 874281 | BOARDING LADDER TELESCOPE | 1 PC |
| UTE 873385 | GUNNEL RUBBER 623 12,5 M SILVER-GREY | 1 PC |
| UTE 873380 | GUNNEL FITTINGS SILVER-GREY | 2 PC |
| UTE 871702 | FLAG HOLDER ATTACHMENT SS | 1 PC |
| Q/S 859223 | SENSOR-SPEED/TEMP | 1 PC |
| UTE 873283 | DRAINING PLUG NR 501 | 1 PC |
| UTE 877168 | DEPTH TRANSDUCER THRU-HULL | 1 PC |



- UTE 875119 ROUND BASE FOR POLE WHITE 1 PC
- UTE 875176 RAIL S55 CENTER AFT 07- 1 PC
- UTE 873426 DECKFILL UNLEADED SS 38 MM 1 PC
- Q/S 883720A15 CABLE ASSY II 15 FT PLATINUM 2 PC
- UTE 874553 CYLINDER COMPACT BAYSTAR 1 PC
- UTE 874554 HOSE 18" BAYSTAR 2 PC
- UTE 874281 BOARDING LADDER TELESCOPE 1 PC
- UTE 875078 ENGINE PLATE A ALU 1 PC
- UTE 875084 ALU PROFILE A 55 1 PC
- UTE 870840 ENGINE PLATE OUTSIDE 022 1 PC
- UTE 874770 CLAMSHELL COVER STAINLESS 1 PC



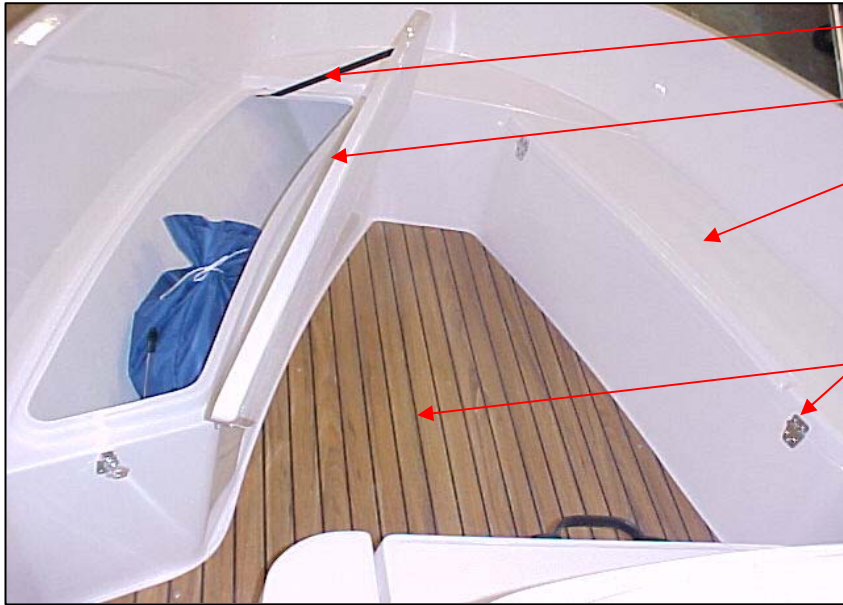
- UTE 877132 LOUVERED VENT 82X82 STAINLESS 1 PC
- UTE 877133 LOUVERED VENT HOSE ADAP 1 PC
- UTE 872818 ANCHOR HATCH AFT 1 PC
- UTE 877285 BOWEYE SS 12MM LONG W. LOCKNUT 2 ST
- UTE 871642 ANTI-SYPHONE VALVE SELF-BAILING DEVICE 1 PC
- UTE 870903 THRU HULL FITTINGS 65 MM COPPER 1 PC

Uttern S55 outboard model year 2009

Seats fore



- | | | |
|------------|-----------------------------------|-----------|
| UTE 873497 | DECAL UTTERN HEAD SILVER VERY BIG | 1 PC |
| UTE 874331 | BOW RAIL S/B S56 EXCL | 1 PC |
| UTE 874332 | BOW RAIL PORT S56 EXCL | 1 PC |
| UTE 873463 | CLEAT 205X55 MM | 4 PC/BOAT |
| UTE 872817 | ANCHOR HATCH FORE | 1 PC |
| UTE 874625 | NAV.LIGHTS POP-UP 12M | 1 PC |



- UTE 870581 HATCH STRAP 0,4 M 2 PC
- UTE 873104 HATCH 104 1 PC
- UTE 873105 HATCH 105 1 PC
- UTE 877132 LOUVERED VENT 82X82 STAINLESS 4 PC/BOAT
not in picture
- UTE 871245 HINGE 59X37 3+2 4 PC
- UTE 874774 FLOOR SET S55 06- 1 PC



- UTE 874770 CLAMSHELL COVER STAINLESS 1 PC

Uttern S55 outboard model year 2009

Starboard side



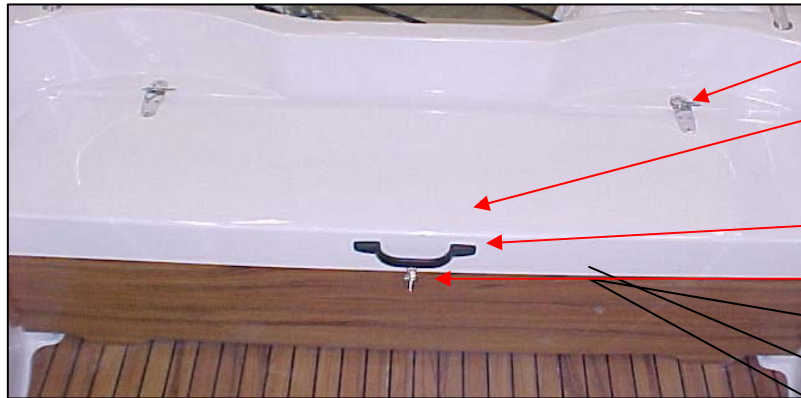
- UTE 872920 AFT PULPIT 5202/S52/S55 SB/PORT 1 PC
- UTE 872920 AFT PULPIT 5202/S52/S55 SB/PORT 1 PC
- UTE 873455 DECAL UTTERN HEAD ENCIRCLED SILVER 1 PAIR
- UTE 874586 STREIP "S55" SILVER 1 PC
- UTE 873539 DECAL "BY M" LARGE MODEL 1 PC



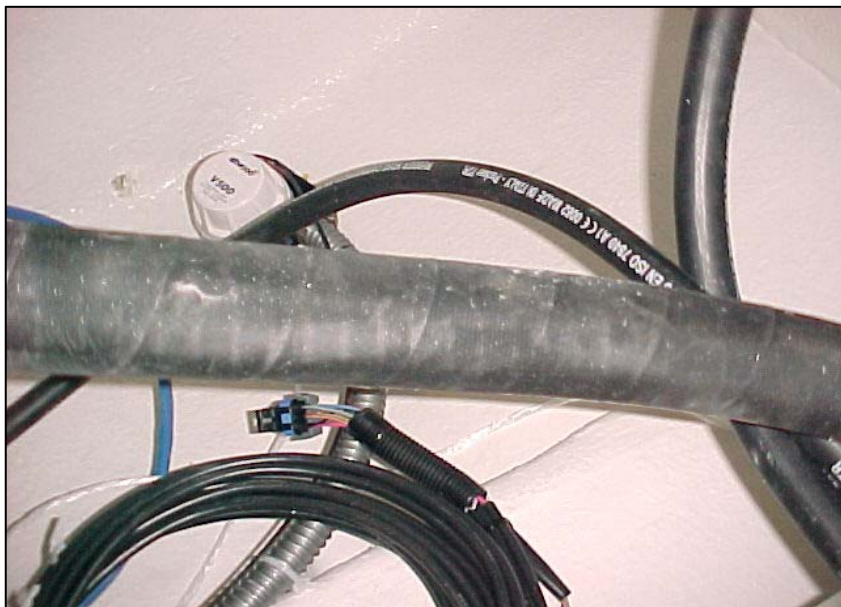
- UTE 873469 BOWEYE CLASS 3 12 MM LOCK NUT 1 PC
- UTE 871936 BOW EYE 12 MM SS 1 PC
- UTE 872989 FUEL TANK VENT ATTWOOD 1 PC
Not in oicture, port side
- UTE 874770 CLAMSHELL COVER STAINLESS 1 PC

Uttern S55 outboard model year 2009

Seats aft



UTE 870890	SPRING LOCK 4 MM SS	2 PC
UTE 873101	HATCH 101	1 PC
UTE 873465 not in picture	INSPECTION LID 355X600 NOVARADE	1 PC
UTE 877278	GRABHANDLE BLACK/PLASTIC	1 PC
UTE 871694	ECCENTRIC LOCK ADJUSTABLE	1 PC
UTE 871821	LOCK FITTINGS FOR ECCENTRIC LOCK W. H	1 PC
UTE 871612 not in picture	THRU HULL FITTINGS 1" CONVEX	1 PC
UTE 871632 not in picture	HOSE ADAPTER 1" 32 MM HOSE	1 PC
UTE 871629 not in picture	TUBE SOCKET 1"	1 PC



UTE 872178	HOSE 32 MM SELF BAILING	1 PC
UTE 870545	BATTERY STRAP 1 M	1 PC
UTE 872182	HOSE 75 MM GREY 6 M	1 PC
UTE 871622	SHUT OFF VALVE 1"	1 PC
UTE 871632	HOSE ADAPTER 1" 32 MM HOSE	1 PC
UTE 872178	HOSE 32 MM SELF BAILING	0,75 M
UTE 870602	TANK STRAP 1,5 M	2 PC
UTE 873289	WATER SEPARATOR Q/S	1 PC
UTE 874554	HOSE 18" BAYSTAR	1 PC
UTE 871175	BAILING TUBE 5102	1 PC
UTE 873260	FUEL HOSE 16MM A1	1,65 M
UTE 872704	MAIN POWER SWITCH	1 PC
UTE 874317	FUEL HOSE 38 A1 1,25 M	1 PC
UTE 871650	BATTERY BOX	1 PC
UTE 874463	FUELTANK 90 L PLASTIC GASOLINE	1 PC
UTE 873261	FUEL HOSE 10MM A1	0,6 M
UTE 872176	HOSE 19 MM GREY FOLDED	1,7 M
UTE 873400	BILGE PUMP 500 FULLY AUTOMATIC	1 PC

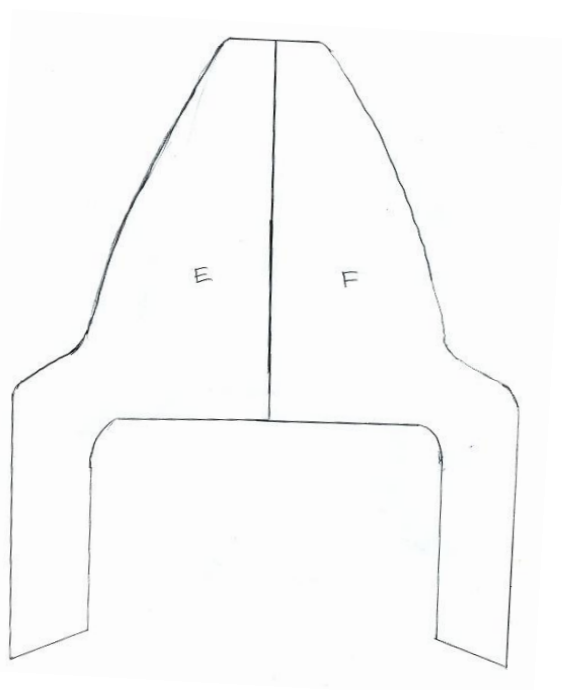
Uttern S55 outboard model year 2009

Laminate floor

S55 UB and S55 IB:

E= UTE 874774-1 FLOOR S55 06- Part E

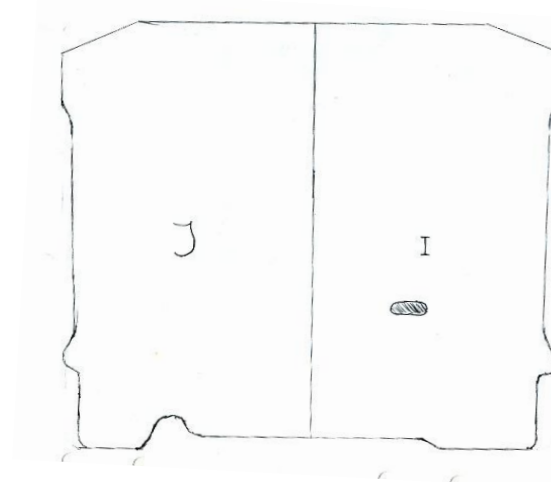
F= UTE 874774-2 FLOOR S55 06- Part F



S55 OB:

J= UTE 874774-3 FLOOR S55 06- Part J

I= UTE 874774-4 FLOOR S55 06- Part I



Additional information

Documents

UTE 871559	DECAL SET ALU-COLOURED W.BLACK PRINT	1 PC
UTE 870547	FOLDER WITH ZIPPER	1 PC
UTE 873262	USER MANUAL SWEDISH	1 PC
Q/S 88285504U	POLY BOAT OG SUP UTTERN	1 PC
Q/S 8828553WU	UTTERN WARRANTY SUPPLEMENT	1 PC
Q/S 83004243	WARRANTY CARD	1 PC

UTE 875107 ACCESSORIES BAG C1 1 PC

Parts in bag:

UTE 871215	ANCHOR 5,5 KG	1 PC
UTE 871223	ANCHOR ROPE 30MX10MM	1 PC
UTE 871229	MOORING ROPE 4MX12MM	1 PC
UTE 871230	MOORING ROPE 10MX12MM	1 PC
UTE 871226	FENDER LINE 4x1,5MT	1 PC
UTE 871695	FENDER 15X51 CM WHITE G-3	4 PC
UTE 871955	ACCESSORY BAG	1 PC
UTE 874290	UTTERN BAG	1 PC

UTE 875117	ALL-ROUND POLE LIGHT 48"	2 PC
UTE 875124	WINDOW S55 900H INCL BOW,BOX 07-	1 PC
UTE 877032	CANVAS DRIVER SEAT S55OB 07-	1 PC
UTE 877101	STEER. WHEEL FERARRA 800 BLACK	1 PC
UTE 874283	COMPASS SILVA 58	1 PC
UTE 877167	NORTHSTAR EXPLORER 650	1 PC
UTE 874463	FUELTANK 90 L PLASTIC GASOLINE	1 PC