

Uttern S52 excl model year 2005

Parts catalogue



Revision history

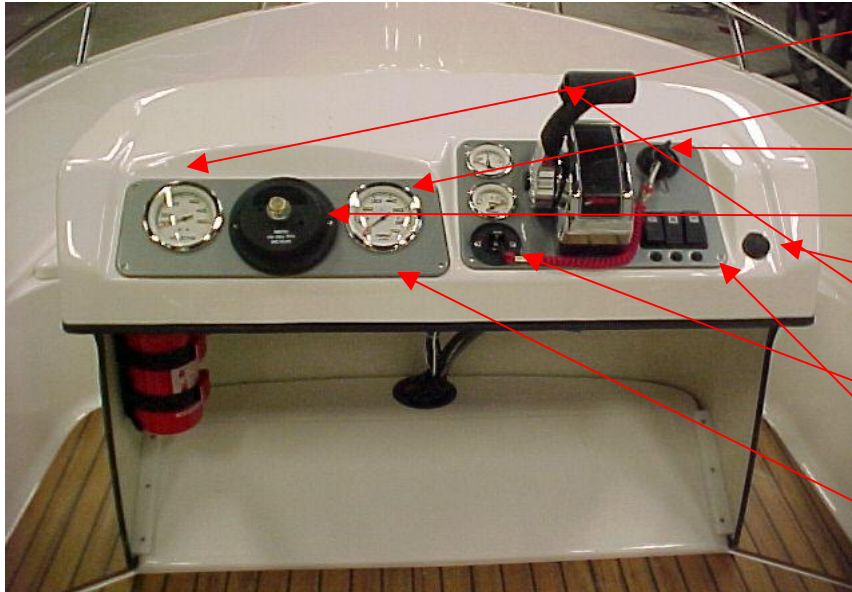
2003-12-12 First release

2004-12-23 Update for 2005 ready

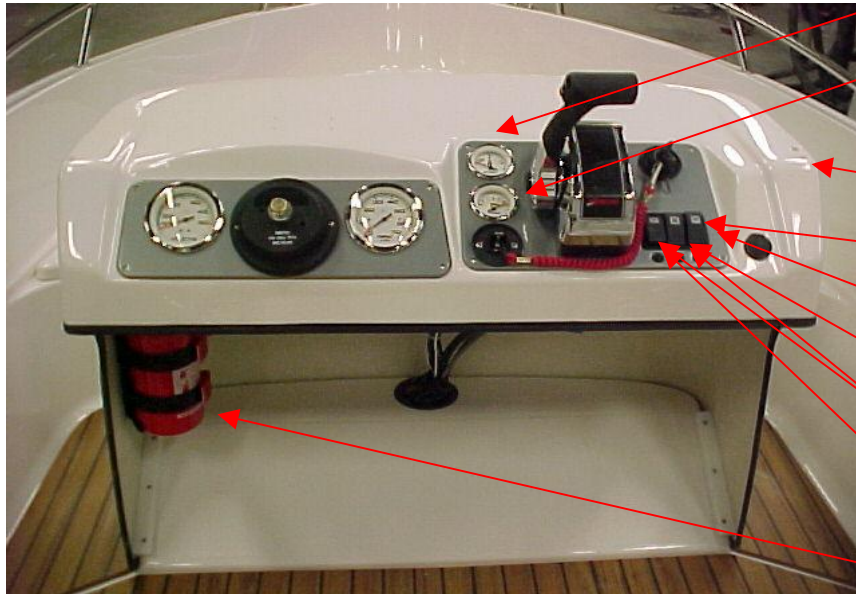


Uttern S52 excl model year 2005

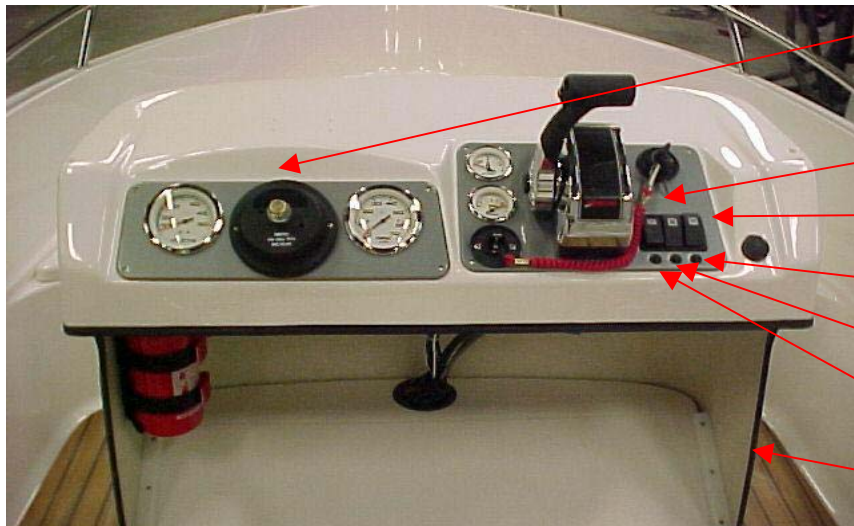
Steering panel



| | | |
|--------------------------------|--------------------------------------|------|
| UTE 873300 | GAUGE-SPEEDOMETER CHROME/WHITE | 1 PC |
| UTE 873301 | GAUGE-TACHOMETER CHROME/WHITE | 1 PC |
| Q/S 816626A15 | IGNITION SWITCH | 1 PC |
| UTE 873320 | STEERING HELM NO FEED 4,2 | 1 PC |
| UTE 873748 | SOCKET 12V ROUND FLUSH BLACK | 1 PC |
| Q/S 883711A12 | REMOTE CONTROL TOP MOUNTED | 1 PC |
| UTE 873270 | EMERGENCY STOP SWITCH | 1 PC |
| UTE 874246 | INSTRUMENT PANEL REMOTE S52EX | 1 PC |
| UTE 874247 | INSTRUMENT PANEL STEERING WHEEL S52I | 1 PC |
| UTE 874498 (not in picture) | CABLE SYSTEM PANEL S52 -05 | 1 PC |

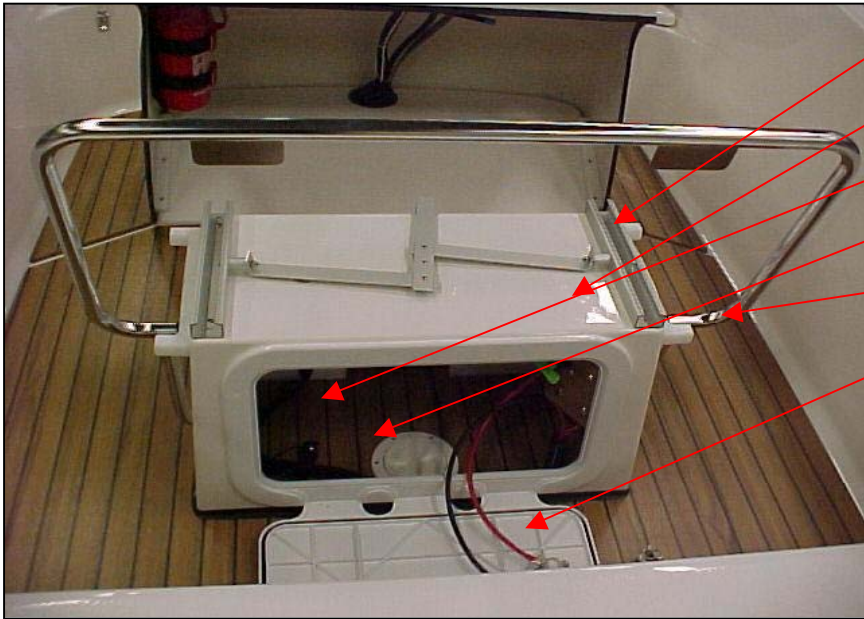


- UTE 873302 FUEL GAUGE CHROME/WHITE 1 PC
- UTE 873303 POWER TRIM GAUGES CHROME/WHITE 1 PC
- UTE 873268 HARNESS KIT Q/S 1 PC
(not in picture)
- UTE 874514 STEERING PANEL -05 S52EX 1 PC
- UTE 873473 SWITCH BILGE PUMP 1 PC
- UTE 873474 MAIN SWITCH (ON)-OFF BILGE PUMP 1 PC
- UTE 871339 SWITCH NAVIGATION LIGHTS 1 PC
- UTE 871336 MAIN SWITCH ON-OFF WITHOUT PUSH-BOTT 2 PC
- UTE 873315 SWITCH INSTRUMENT LIGHTING 1 PC
- UTE 873637 FIRE EXTINGUISHER GLORIA 2 KG 1 PC



- UTE 873321 STEERING HELM PANEL MOUNT 1 PC
- UTE 874153 DRINK HOLDER A51,A56,C56 2 PC
ej i bild
- UTE 871342 FRAME FOR EL PANEL MIDDLE 1 PC
- UTE 871341 FRAME FOR EL PANEL SIDE 2 PC
- UTE 874287 CIRCUIT BREAKER 5A 1 PC
- UTE 874288 CIRCUIT BREAKER 10A 1 PC
- UTE 874289 CIRCUIT BREAKER 16A 1 PC
- UTE 872145 U-TRIM WITH LOW TOP SEALER 2,25 M/BOAT



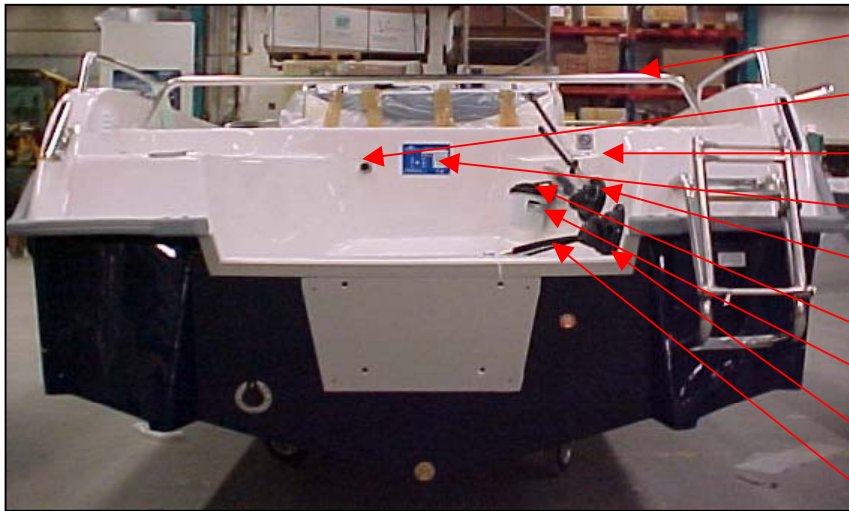


- | | | |
|------------|---------------------------------|------|
| UTE 871734 | SLIDING PROFILE | 2 PC |
| UTE 873102 | SEAT 102 S52 EX | 1 PC |
| UTE 871650 | BATTERY BOX | 1 PC |
| UTE 870545 | BATTERY STRAP 1 M | 1 MT |
| UTE 870651 | BOW SEAT SS S52/S56 BACK | 1 PC |
| UTE 873465 | INSPECTION LID 355X600 NOVARADE | 1 PC |

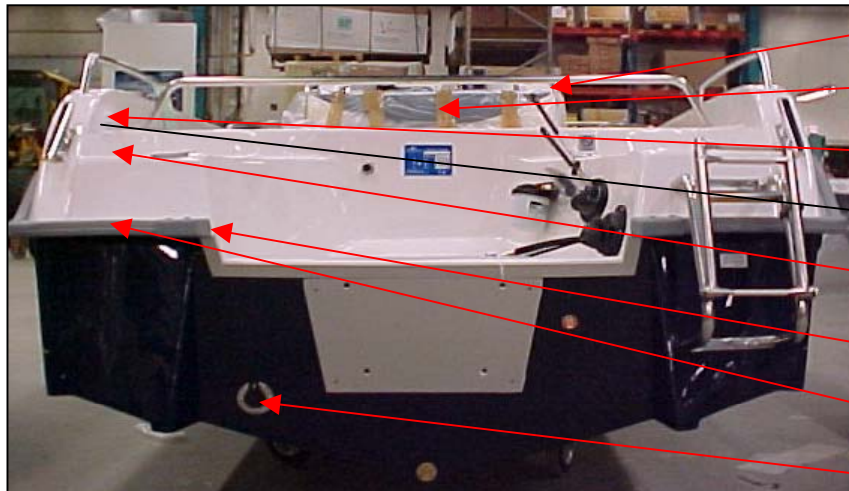


Uttern S52 excl model year 2005

Aft

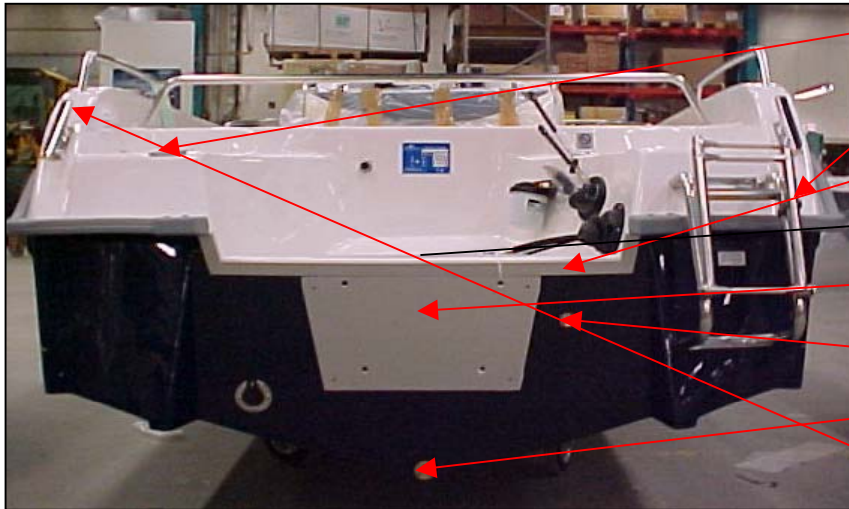


- UTE 872922 PULPIT 5202/S52 AFT IN THE MIDDLE 1 PC
- UTE 872989 FUEL TANK VENT ATTWOOD 1 PC
- UTE 873426 DECKFILL UNLEADED SS 38 MM 1 PC
- UTE 871405 CE-PLATE UTTERN 1 PC
- UTE 871770 CABLE BUSHING FOR BOOT HOP100 MM 2 PC
- Q/S 883720A15 CABLE ASSY II 15 FT PLATINUM 2 PC
- UTE 873289 WATER SEPARATOR Q/S 1 PC
- UTE 871771 CABLE BUSHING FOR BOOT 140 MM OUTSID 1 PC
- UTE 873466 STEERING CABLE 4,75 M (15 FT) QUICK MOL 1 PC



- UTE 870651 BOW SEAT SS S52/S56 BACK 1 PC
- UTE 870320 SEAT 5602/5202 BLUE/WHITE W. BOLSTER 1 PC
- UTE 872002 LOUVER WITH ADAP. 90X90 WHITE 1 PC
- UTE 872182 HOSE 75 MM GREY 6 M 1 PC
- UTE 871250 HINGE 74X39 2+2 2 PC
- UTE 873380 GUNNEL FITTINGS SILVER-GREY 2 PC
- UTE 873385 GUNNEL RUBBER 623 12,5 M SILVER-GREY 1 PC
- UTE 871642 ANTI-SYPHONE VALVE SELF-BAILING DEVIC 1 PC



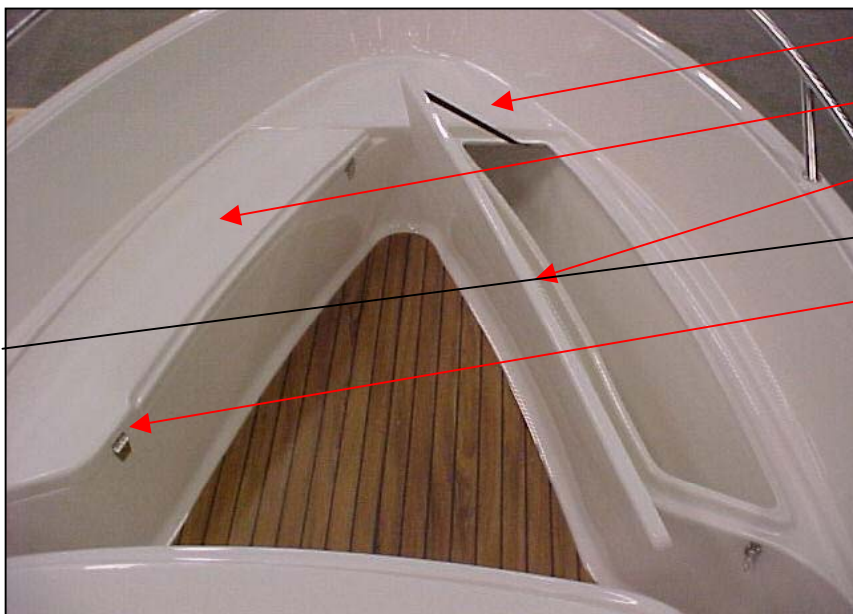


| | | |
|------------|---------------------------------------|--------|
| UTE 873380 | GUNNEL FITTINGS SILVER-GREY | 1 PC |
| UTE 874281 | BOARDING LADDER TELESCOPE | 1 PC |
| UTE 870811 | ALU PROFILE 30X20X3 ANODIZED NATURE 1 | 1 M |
| UTE 870819 | ALU PROFILE ENGINE PLATE INSIDE NATU | 0,46 M |
| UTE 870840 | ENGINE PLATE OUTSIDE 022 | 1 PC |
| UTE 870905 | THRU HULL FITTINGS 120 MM COPPER | 1 PC |
| UTE 873283 | DRAINING PLUG NR 501 | 1 PC |
| UTE 871702 | FLAG HOLDER ATTACHMENT SS | 1 PC |



Uttern S52 excl model year 2005

Seats fore



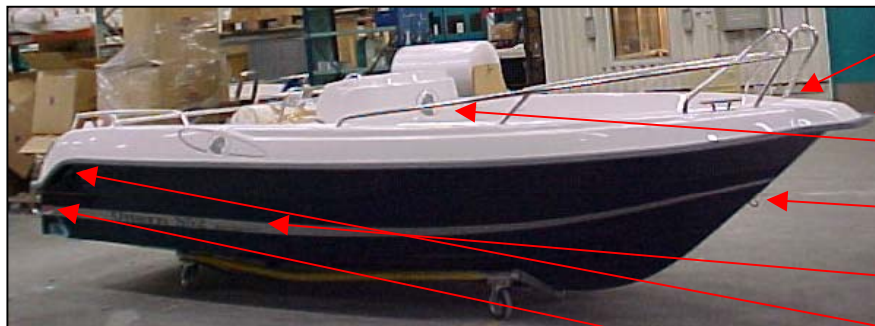
| | | |
|--------------------------------|-------------------|-----------|
| UTE 870581 | HATCH STRAP 0,4 M | 0,4 M |
| UTE 873104 | HATCH 104 | 1 PC |
| UTE 873105 | HATCH 105 | 1 PC |
| UTE 872000 (not in picture) | LOUVER 90X90V | 4 PC/BOAT |
| UTE 871245 | HINGE 59X37 3+2 | 4 PC |

Uttern S52 excl model year 2005

Starbord side



| | | |
|------------|------------------------------------|-----------|
| UTE 872919 | BOW PULPIT 5202/S52 PORT | 1 PC |
| UTE 872918 | BOW PULPIT 5202/S52 SB | 1 PC |
| UTE 873463 | CLEAT 205X55 MM | 4 PC/BOAT |
| UTE 872921 | AFT PULPIT 5202/S52 PORT | 1 PC |
| UTE 872920 | AFT PULPIT 5202/S52 SB | 1 PC |
| UTE 873455 | DECAL UTTERN HEAD ENCIRCLED SILVER | 1 PAIR |

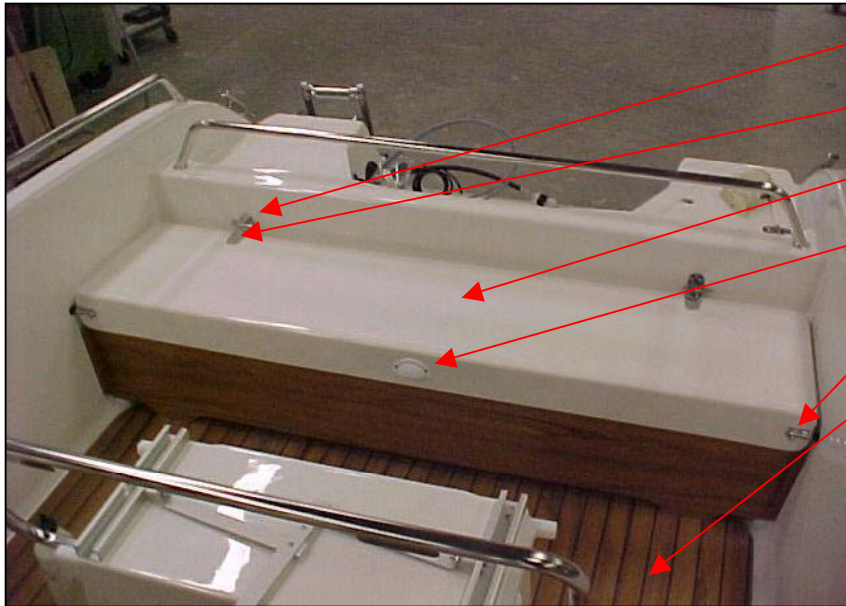


| | | |
|------------|--------------------------------------|--------|
| UTE 873469 | BOWEYE CLASS 3 12 MM LOCK NUT | 1 PC |
| UTE 873385 | GUNNEL RUBBER 623 12,5 M SILVER-GREY | 1 PC |
| UTE 873497 | DECAL UTTERN HEAD SILVER VERY BIG | 1 PC |
| UTE 871936 | BOW EYE 12 MM SS | 1 PC |
| UTE 873433 | STREIP "S52" SILVER | 1 PAIR |
| UTE 873475 | THRU HULL 3/4" WHITE | 1 PC |
| UTE 873539 | DECAL "BY M" LARGE MODEL | 2 PC |



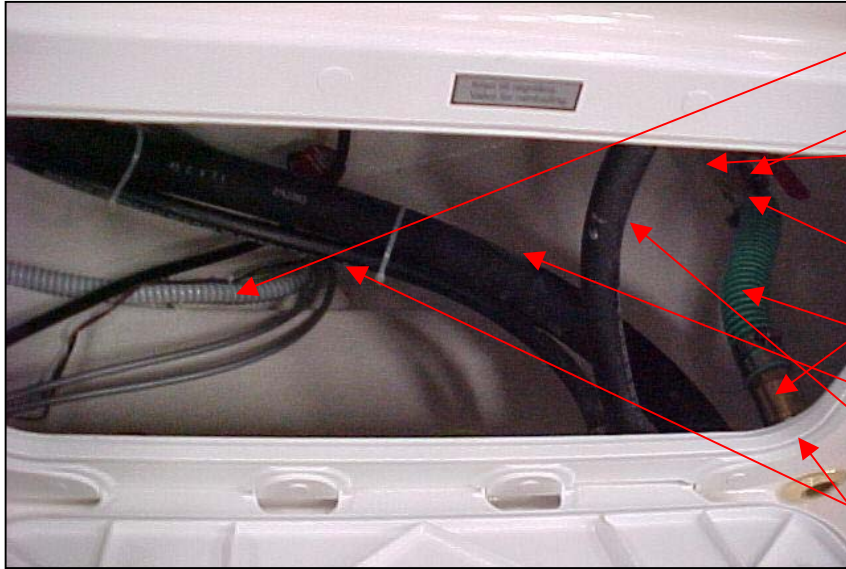
Uttern S52 excl model year 2005

Seats aft

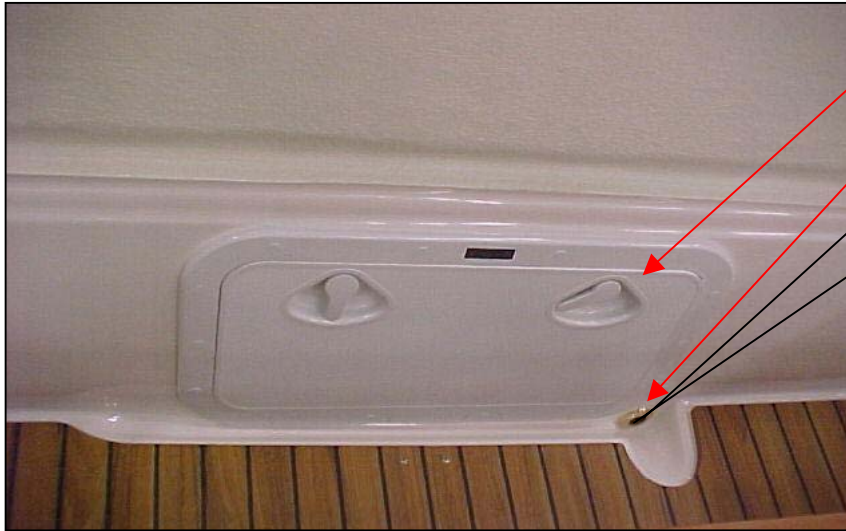


| | | |
|------------|-----------------------------------|-------|
| UTE 870890 | SPRING LOCK 4 MM SS | 2 PC |
| UTE 871233 | HINGE 128X33 3+3 | 2 PC |
| UTE 873101 | HATCH 101 | 1 PC |
| UTE 871773 | CABLE BUSHING WHITE 87 MM PLASTIC | 1 PC |
| UTE 871918 | BARREL BOLT | 2 PC |
| UTE 872959 | LAMINATE FLOOR S52 | 1 SET |





- UTE 872176 HOSE 19 MM GREY FOLDED 1,2 M
- UTE 871622 SHUT OFF VALVE 1" 1 PC
- UTE 871175 BAILING TUBE 5102 1 PC
- UTE 873552 BILGE PUMP 500 1 PC
(not in picture)
- UTE 871632 HOSE ADAPTER 1" 32 MM HOSE 2 PC
- UTE 872178 HOSE 32 MM SELF BAILING 0,33 M
- UTE 872179 HOSE 38 MM FUEL A2 1,4 M
- UTE 873260 FUEL HOSE 16MM A1 1,32 M
- UTE 873261 FUEL HOSE 10MM A1 1,4 M
- UTE 871629 TUBE SOCKET 1" 1 PC



- UTE 873465 INSPECTION LID 355X600 NOVARADE 1 PC
- UTE 871612 THRU HULL FITTINGS 1" CONVEX 1 PC
- UTE 871632 HOSE ADAPTER 1" 32 MM HOSE 1 PC
- UTE 871629 TUBE SOCKET 1" 1 PC

Additional information

Documents

| | | |
|---------------|--------------------------------------|------|
| UTE 871559 | DECAL SET ALU-COLOURED W.BLACK PRINT | 1 PC |
| UTE 870547 | FOLDER WITH ZIPPER | 1 PC |
| UTE 873262 | USER MANUAL SWEDISH | 1 PC |
| Q/S 88285513U | POLY BOAT OG SUP UTTERN | 1 PC |
| Q/S 8828553WU | UTTERN WARRANTY SUPPLEMENT | 1 PC |
| Q/S 83004243 | WARRANTY CARD | 1 PC |

UTE D9052 ACCESSORY BAG COMPLETE 1 PC

| | | |
|------------|-----------------------|------|
| UTE 871215 | ANCHOR 5,5 KG | 1 PC |
| UTE 871223 | ANCHOR ROPE 30MX10MM | 1 PC |
| UTE 871229 | MOORING ROPE 4MX12MM | 1 PC |
| UTE 871230 | MOORING ROPE 10MX12MM | 1 PC |
| UTE 871955 | ACCESSORY BAG | 1 PC |
| UTE 874290 | UTTERN BAG | 1 PC |

| | | |
|------------|-------------------------------------|------|
| UTE 873372 | CANVAS DRIVER SEAT S52/S56 2-PIECES | 1 PC |
| UTE 871210 | NAVIGATION LIGHT 7M WHITE | 1 PC |
| UTE 871207 | NAVIGATION LIGHT 7M RED/GREEN | 1 PC |
| UTE 873971 | WINDSHIELD 900H INCL BOW,ELECTRIC. | 1 PC |
| UTE 871655 | ANTI GLARE DEVICE ROUND | 1 PC |
| UTE 872664 | BOW FOR WINDSHIELD 900 | |
| UTE 874291 | STEERING WHEEL 1073 SS/GREY | 1 PC |
| UTE 874537 | NAVMAN PRERIG. KIT TRACKER 5500I | 1 PC |

