

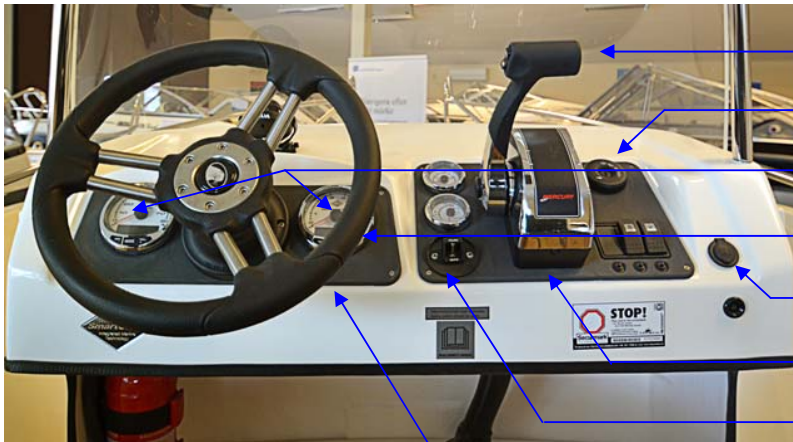
Uttern S52 model year 2012

Parts catalogue



Uttern S52 model year 2012

Steering panel and driver seat



Q/S 8M0041431

Q/S 893353A03

Q/S 889223K32

Q/S 8590743

UTE 873748

INT 1976410

Q/S 19674A07

INT 1976411

UTE 874542
(not in picture)

+4500 RC - SINGLE, OB TRIM

+KEY SWITCH KIT

+KIT-SC TACH & 80 SPEEDO,WHITE

+BEZEL - CHROME, OMEGA GAUGES

SOCKET 12V ROUND FLUSH MOUNT

PANEL, BLANK CTRL, S52-10, DK

LANYARD STOP KT-FLUSH MNT-OB

PANEL, BLANK HELM, S52-10 DK G

CABLE SY. S52 OPTI PANEL CA



- Q/S 879910K11 +02 224 022 FUEL LEVEL-WHITE
- Q/S 879914K11 +01 212 012 TRIM-WHITE-SINGLE
- Q/S 8798713 +BEZEL - 52 MM GUAGE, CHROME
- INT STRCON-874514PA UTT STEERING CONSOLE 874514 LA
- UTE 873320 STEERING HELM NO FEED 4.2
- INT 2064108 HOSE,CONDUIT/UNSPPLIT 2"BLK
- UTE 874706 FIRE EXTINGUISHER PRIMEX 2KG



- UTE 877101 STEER. WHEEL FERARRA 800 BLACK
- INT 2016942 EMBLEM,STEERING WHEEL CTR UTT
- UTE 873321 STEERING HELM PANEL MOUNT
- UTE 874287 CIRCUIT BREAKER 5A
- UTE 874288 CIRCUIT BREAKER 10A
- UTE 872148 U-TRIM BLACK



UTE 874283

COMPASS SILVA 58

INT 2016954

LANYARD SWITCH LABEL

Q/S 8592715

EMBLEM-SMARTCRAFT

Electrical parts not shown in picture:

Q/S 859223

+SENSOR-SPEED/TEMP TRANSOM MNT

Q/S 859318T2

+JUNCTION BOX WEATHER CAP

Q/S 859743T03

+HARNESS ASY-FUEL/PADDLE OB

Q/S 881879A22

+PITOT SENSOR KT-1.5L OPTI S/C

Q/S 891777A01

+TRIM SENDER KIT - 1.5L OPTI

UTE 875120

CABLE SYS S52S49 MAIN CABL 07-

UTE 874008

CABLE SYSTEM S52 BATT. CABLE

UTE 874902

JUNCTION BOX +/- POL



INT 1980720

PANEL, MAINSGBATTSW, 4 BRKR

Q/S 808775

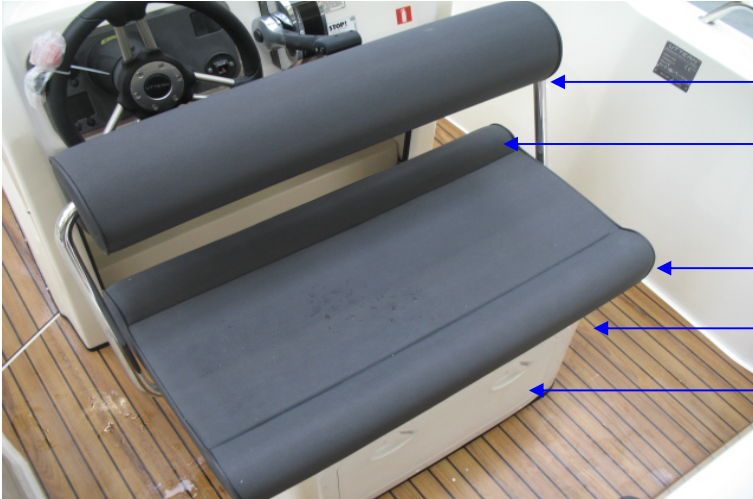
+AT-9065-1 BATTERY BOX 13X9X10

UTE 871661

THRU HULL FITTING 150MM BLACK

UTE 872145

U-TRIM W SEAL LOWER



UTE 871889

ENDCAP 25/22 BLACK

UTE 870651

BOW SEAT SS 5602

INT 2079220

SEAT DRIVER, S52/S55-12

INT 2079217

SEAT COVER, DRIVER S52

UTE 874630

SLIDE RAILS W BAR

INT SEAT-874631PA

UTT HELM SEAT BASE 874631 LAM

UTE 873465

INSPECTION LID 355X600

UTE 877132

LOUVERED VENT 82X82 STAINLESS



INT HATCH-873105PA

UTT STBD FWD STOR HATCH 873105

UTE 871821
UTE 871694

LOCK FITTING FOR EXENTER-LOCK
EXCENTER LOCK SS ADJUSTABLE

UTE 871245

HINGE 59X37 (3+2)



INT 2017186
STRAP,NYLON20MMW 120MML/WHITE



INT HATCH-873104PA

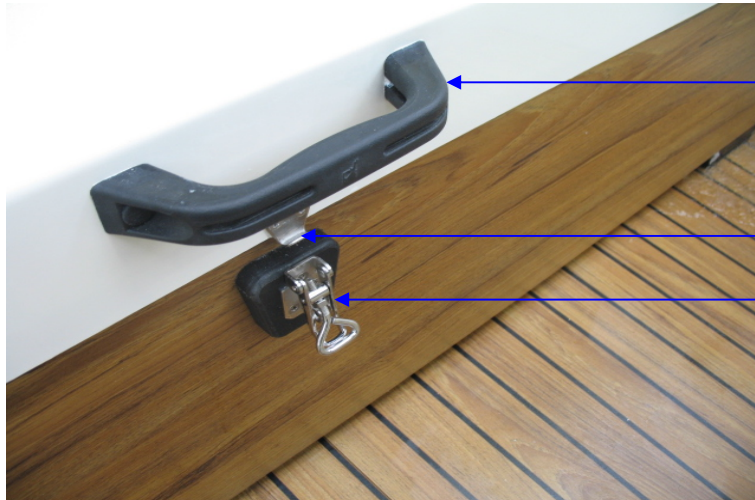
UTT PORT FWD STOR HATCH 873104

UTE 871821
UTE 871694

LOCK FITTING FOR EXENTER-LOCK
EXCENTER LOCK SS ADJUSTABLE

UTE 871245

HINGE 59X37 (3+2)



UTE 877278

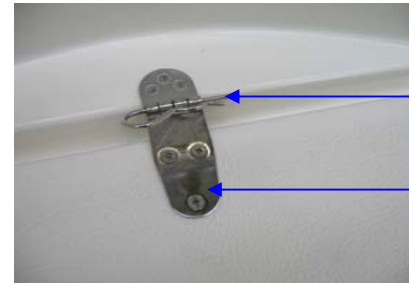
GRABHANDLE ROCKA BLACK/PLASTIC

UTE 871821

LOCK FITTING FOR EXENTER-LOCK

UTE 871694

EXCENTER LOCK SS ADJUSTABLE



UTE 870890
SPRINGLOCK 4 MM SS

UTE 871233
HINGE 128 X 38 (3+3)



INT SEAT-873101PA

UTT COCKPIT BENCH SEAT 873101

UTE 873465

INSPECTION LID 355X600

UTE 871918

SLIDE BOLT CHROME 50MM

UTE 877332

LAMINATE FRONT S52



UTE 870644

WS GRABRAIL 900

INT 2015807

WINDSHIELD , ACRYLIC,6MM S55/S52

UTE 871094

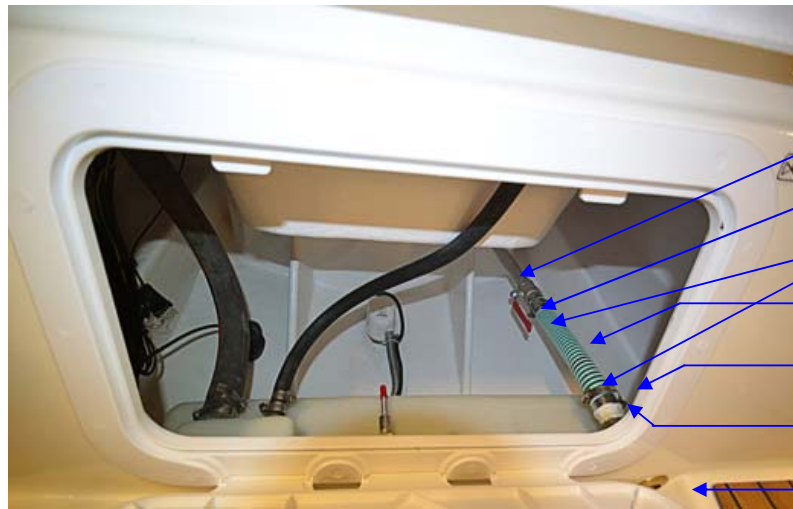
WS FASTENING KNOB

INT 2017185

DIE CUT TAPE S-52WINDSCREEN AD

UTE 874763

CUP HOLDER EXTERNAL WHITE



UTE 871175

BAILING TUBE 5102

UTE 871622

SHUT OFF VALVE 1"

UTE 871632

HOSE ADAPTER 1"

UTE 872178

HOSE 32 MM GREEN DRAIN

UTE 871629

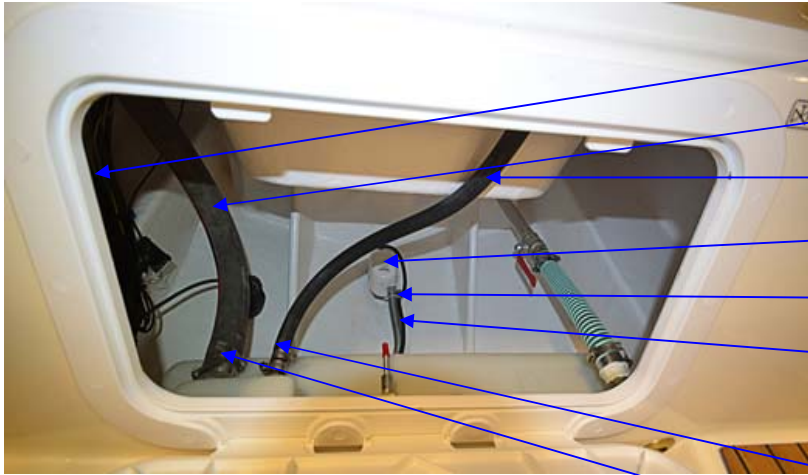
TUBE MUFF 1"

INT 123489

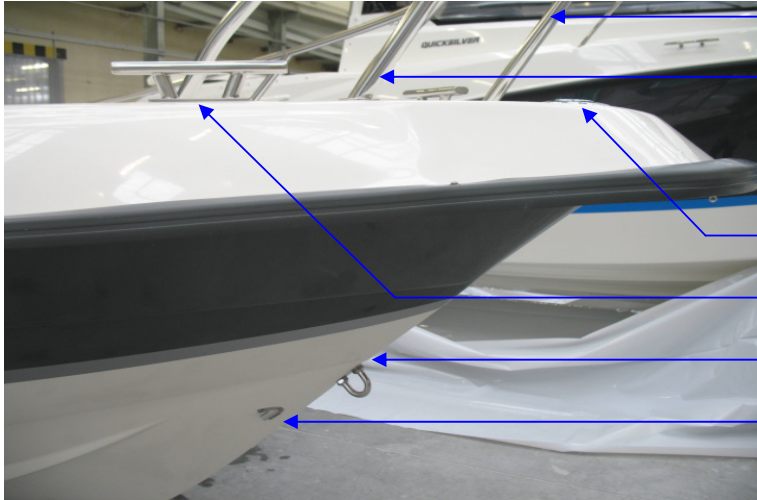
HOSE CLAMP #24

UTE 871612

THRU HULL FITTING 1" CONVEX



- INT 123760 10MM FUELHOSE TYPE A1
- INT 2017535 HOSE, FUEL 1.5" ISO/SAE A2COR
- INT 123778 HOSE, FUEL 5/8" TYPE A1 ISO/C
- INT 1760963 PUMP BILGE SAHARA 500
- INT 263954 HOSE CLAMP #10
- INT 1692922 3/4" ID CORR PVC WATER HOSE
- INT 263954 HOSE CLAMP #10
- INT 256719 HOSE CLAMP #32
- UTE 873710 WS FASTENING PLATBLACK OUT



UTE 872919

BOWRAIL 5202 BB

UTE 872918

BOWRAIL 5202 SB

UTE 874625

NAV.LIGHTS POP-UP 12M

UTE 873463

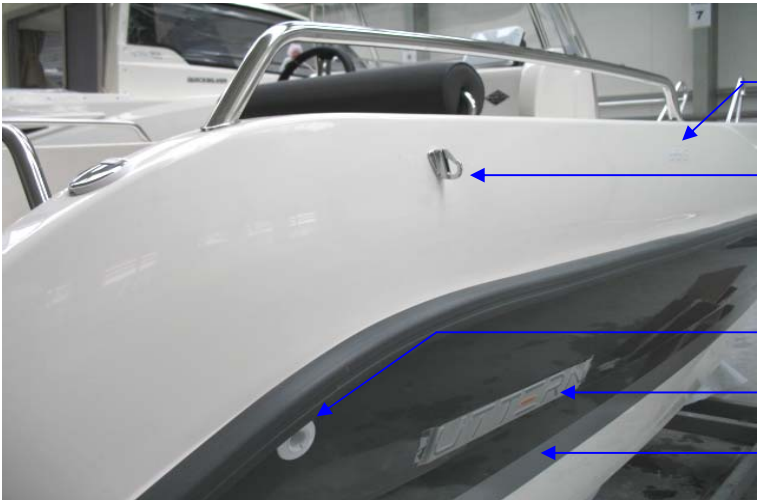
CLEAT SS 205X55MM

UTE 871936

BOWEYE SS 12 MM W.LOCKNUT

UTE 874770

CLAMSHELL COVER STAINLESS



INT 1976631

TAPE, MODEL DESG S52 SLVR

UTE 871699

FENDER ATTACHMENT

UTE 873475

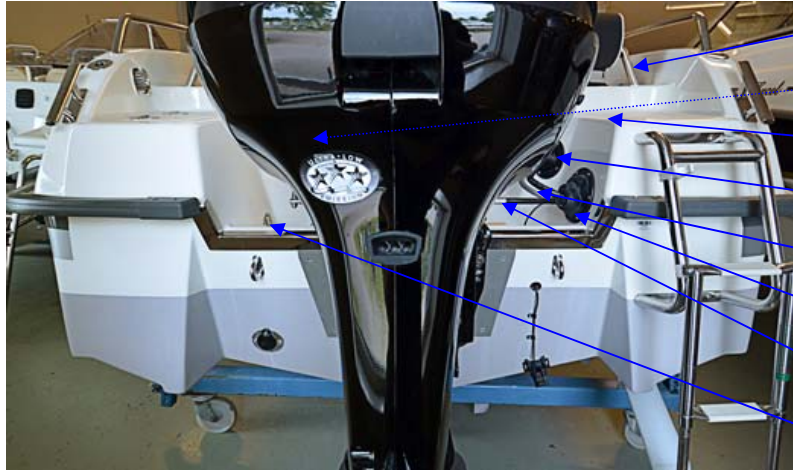
THROU HULL FITTING 3/4 PLA

INT 2073960

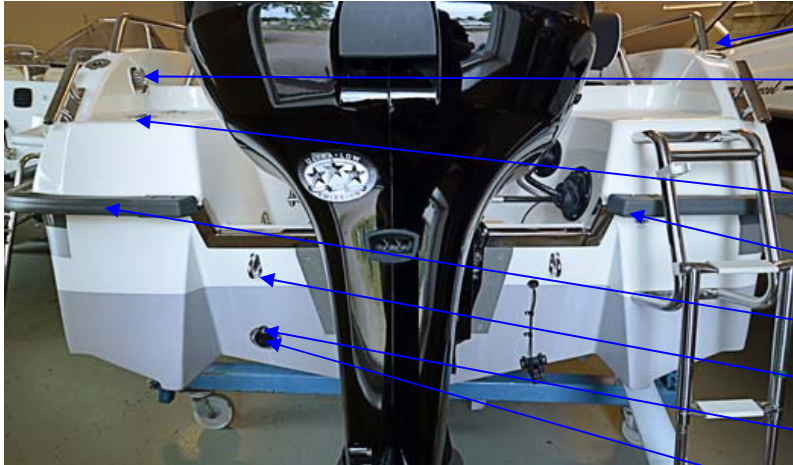
SCRIPT, UTTERN W/METALLIC

INT 1976403

GRAPHICS, STRIPE SET S52-10 SL



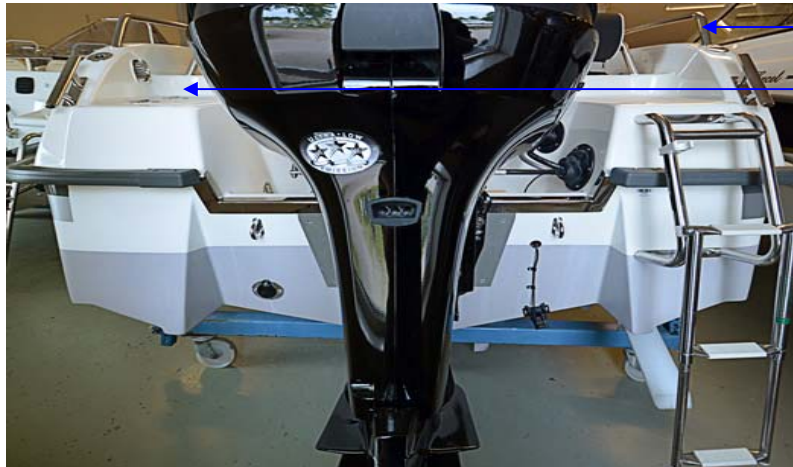
- UTE 872922 RAIL 5202 CENTER AFT
- UTE 872989 FUEL TANK VENTS
- UTE 873426 DECKFILL CROME UNLEADLEGSIN 38
- UTE 871770 BOOT W.TIE STRAP 100 MM
- Q/S 897978A15 +CABLE-PREMIUM GEN II THRO/SHI
- UTE 871771 BOOT RUBBER 140 MM DIAMETER
- UTE 873466 STEERING CABLE 4.57M QUICK MUN
- UTE 874770 CLAMSHELL COVER STAINLESS



- UTE 875119 ROUND BASE FOR POLE WHITE
- UTE 875117 ALL-ROUND POLE LIGHT 48"
- UTE 877132 LOUVERED VENT 82X82 STAINLESS
- UTE 877133 LOUVERED VENT HOSE ADAP
- INT 1577949 HOSE, VENT/BLOWER3" WHT
- UTE 875212 HINGE 74X39 CENTER (2+2)
- INT 1976406 GUNNEL FITTING, DK GRY
- INT 1976408 GUNNEL TRIM, 623 12.5M DK GRY
- UTE 877285 BOWEYE SS 12MM LONG W. LOCKNUT
- UTE 873710 WS FASTENING PLATE BLACK
- UTE 871642 ANTI-SYPHONE VALVE SELF-BAILIN

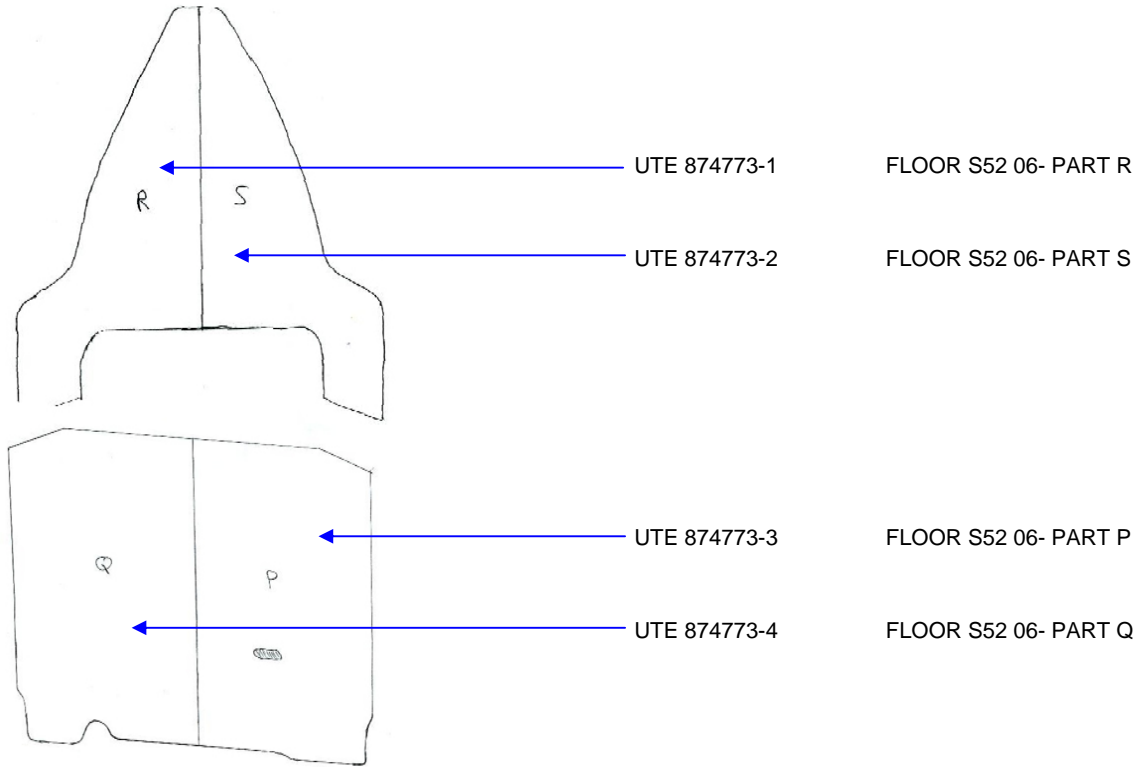


- UTE 871702 FLAG HOLDER ATTACHMENT SS
- UTE 875078 ENGINE PLATE A ALU
- INT 1980874 TRIM EDGE SS TRANSOM S52
- UTE 874281 BOARDING LADDER SS TELESCOP
- INT 2025903 COPPER TUBE
- UTE 870840 ENGINE PLATE ALU OUTSIDE 022
- UTE 873283 DRAIN BRASS NR 501
- UTE 871175 BAILING TUBE 5102



- UTE 872920 BOWRAIL 5202 SB/PORT AFT
- INT HATCH-873169PA UTT TRANS STORAGE HATCH 873169

Laminate floor



Optional parts

S52 BOW CUSHION SET

INT 2017696 **KIT,UPH,CUSION,FWD,S52**

CUSH, BENCH SEAT,PRT, S52

CUSH,BENCH SEAT, SREQUES S52

CUSH, BOW S52

S52 STERN CUSHION SET

INT 2017697 **KIT,UPH,CUSHION,AFT,S52**

CUSH, BENCH SEAT,TRNSM S52

CUSH,BCK,BENCH SEAT,TRNS,S52

S52 SUNKIT

INT 2017698PA **S52 SUNKIT**

CUSH,SUNLNGE,FWD,-12 S52 GRY

S52 SUNKIT WOOD SUPPORT PLATFORM

S52 CANVAS TOP

INT 2021434PA **S52,AFT CANOPY,BLACK W/BOWS**

Spare parts for rigging options

UTT S52 75HP OPTIMAX RIGGING

Q/S 854360A45	PROPELLER ASSEMBLY 13.25 X 16
INT 1701463	BKHD FTG, FUEL CONNECTOR 3/8 IN
INT 858610100	FUEL LINE - 100 FEET

Additional information

Documents

UTE 870547	FOLDER PLAST W.GLIDL
Q/S 88285508	POL.BOAT OG 19L.UTT+BMP 2008
Q/S 8828553WU	UTTERN WARRANTY SUPPLEMENT
INT 875103	CONTROL SHEET

Parts

INT 1976372	ACCESSORY BAG, SML
INT 2086302	ACCESSORY BAG LG
UTE 877039	TRIM KIT S52OB

Labels

INT 2016948	ISO FIRE EXTINGISHER L
INT 2016953	WARNING PETRO FUEL LABEL
INT 2016957	RAINBAILING VALVE LABEL
INT 2016964	WARNING ROTATING PROP LABEL
INT 2016965	WARNING ROTATING PROP HELM LAB
INT 2038765	58.8KW MAX POWER PLATE
INT 1976645	CE-PLATE UTTERN S52
INT 2080223	LABEL, BATT INSTLEU
INT 2088309	PLACARD, MIN BATTREC BRUNSWICK