

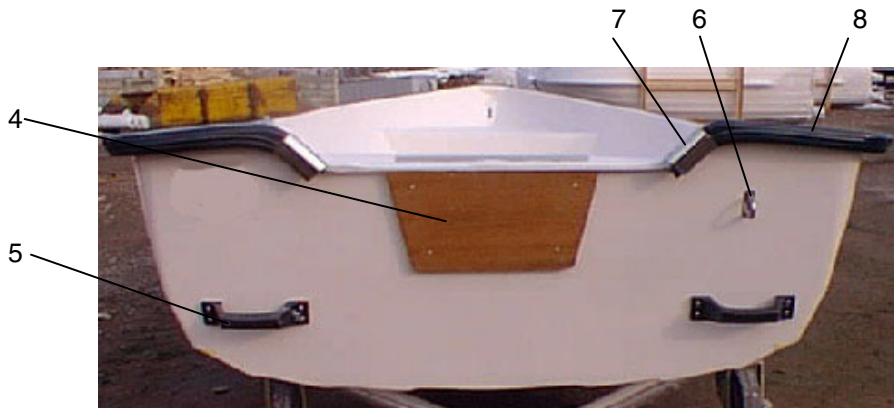


UTTERN R38

2003 Part catalog



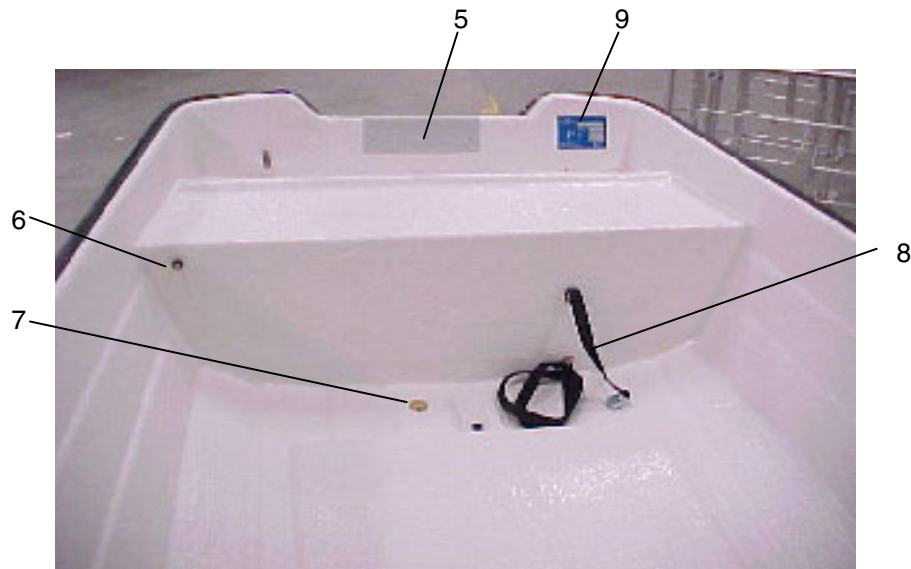
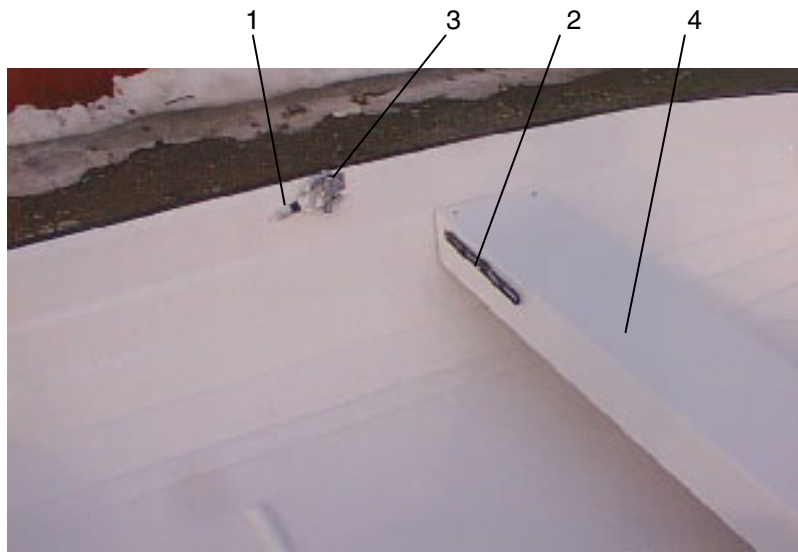
UTTERN R38
 MODEL YEAR 2003



| <u>Item</u> | <u>Part Number</u> | <u>Description</u> | <u>Qty/ boat</u> |
|-------------|--------------------|--------------------------------|------------------|
| 1 | UTE-873445 | DECAL "UTTERN R38" BLUE (PAIR) | 1 PC |
| 3 | Q/S-8322581 | DECAL "BY M" | 2 PC |
| 4 | UTE-870121 | TEAK ENGINE PLATE | 1 PC |
| 5 | UTE-871762 | HANDLE FOOTSTEP | 2 PC |
| 6 | UTE-871938 | BOWEYE SS 8X80 | 1 PC |
| 7 | UTE-871900 | GUNNEL FITTING | 2 PC |
| 8 | UTE-872126 | GUNNEL RUBBER 505 | 9 MT |
| 9 | UTE-871936 | BOWEYE | 1 PC |



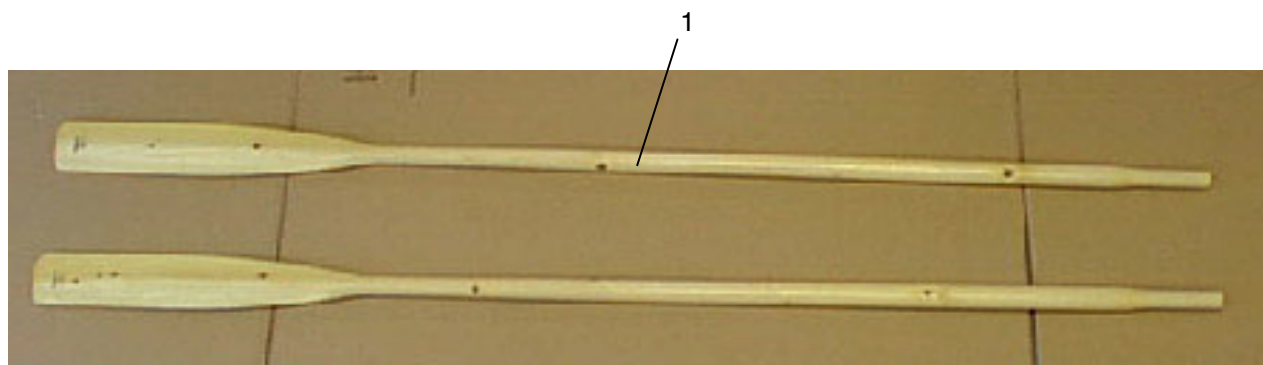
UTTERN R38
 MODEL YEAR 2003



| <u>Item</u> | <u>Part Number</u> | <u>Description</u> | <u>Qty/ boat</u> |
|-------------|--------------------|--------------------|------------------|
| 1 | UTE-872007 | ROWLOCK ALUMIN | 2 PC |
| 2 | UTE-871749 | RUBBER STRAP | 1 PC |
| 2 | UTE-872681 | STRAP EYE | 1 PC |
| 2 | UTE-871780 | STRAP HOOK | 1 PC |
| 3 | UTE-872010 | ROWLOCK ATTACHMENT | 2 PC |
| 4 | UTE-873401 | SEAT | 1 PC |
| 5 | UTE-870819 | ALU PROFILE ENGINE | 0.280 MT |
| 6 | UTE-871748 | DRAIN PLUG RUBBER | 4 PC |
| 7 | UTE-872597 | DRAIN BRASS COMPL. | 1 PC |
| 7 | UTE-871682 | PLUG BRASS | 1 PC |
| 8 | UTE-870602 | TANK STRAP 1.5 MT | 1 PC |
| 9 | UTE-871405 | CE-PLATE UTTERN | 1 PC |



UTTERN R38
 MODEL YEAR 2003



| <u>Item</u> | <u>Part Number</u> | <u>Description</u> | <u>Qty/ boat</u> |
|-------------|--------------------|---------------------------|------------------|
| 1 | UTE-871220 | OARS 8 FEET | 1 PC |
| | UTE-D9050 | ACCESSORIES BAG A | 1 PC |
| | UTE-873262 | OWNERS MANUEL | 1 PC |
| | Q/S-88285513U | DECLARATION OF CONFORMITY | 1 PC |
| | Q/S-8828553WU | WARRANTY MANUAL | 1 PC |
| | Q/S-83004243 | WARRANTY CARD | 1 PC |

ACCESSORIES BAG A:

| | | | |
|--|------------|-------------------|------|
| | UTE-871214 | ANCHOR 3,5 KG | 1 PC |
| | UTE-871222 | ANCHOR ROPE 20 MT | 1 PC |
| | UTE-871229 | MOORING ROPE 4 MT | 1 PC |
| | UTE-872011 | OAR SHANK | 2 PC |
| | UTE-872007 | ROWLOCK HORN | 2 PC |
| | UTE-872683 | BAILER | 1 PC |
| | UTE-871955 | BAG | 1 PC |

