

Uttern D55 exkl Smartcraft model year **2008**

Parts catalogue



Revision history

2003-12-12 First release

2004-12-23 Update for 2005 ready

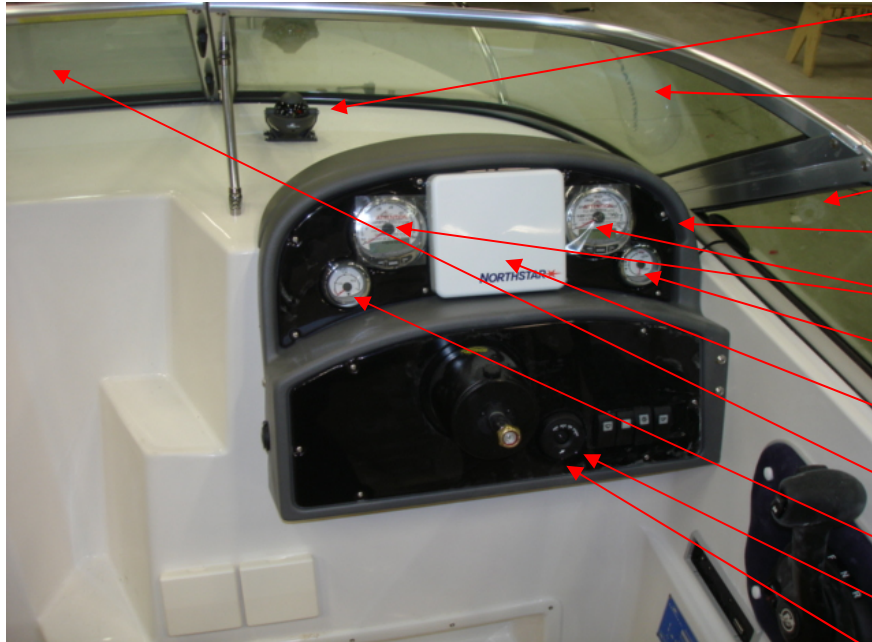
2005-12-23 Update for 2006 ready

2007-01-10 Update for 2007 ready

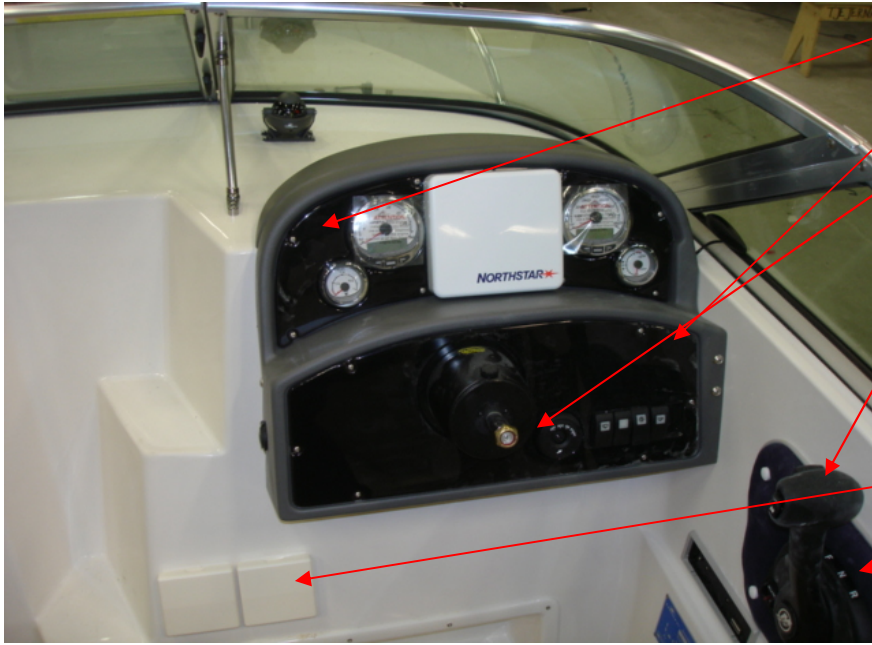
2008-04-11 Update for 2008 ready

Uttern D55 exkl Smartcraft model year 2008

Cabin and steering panel



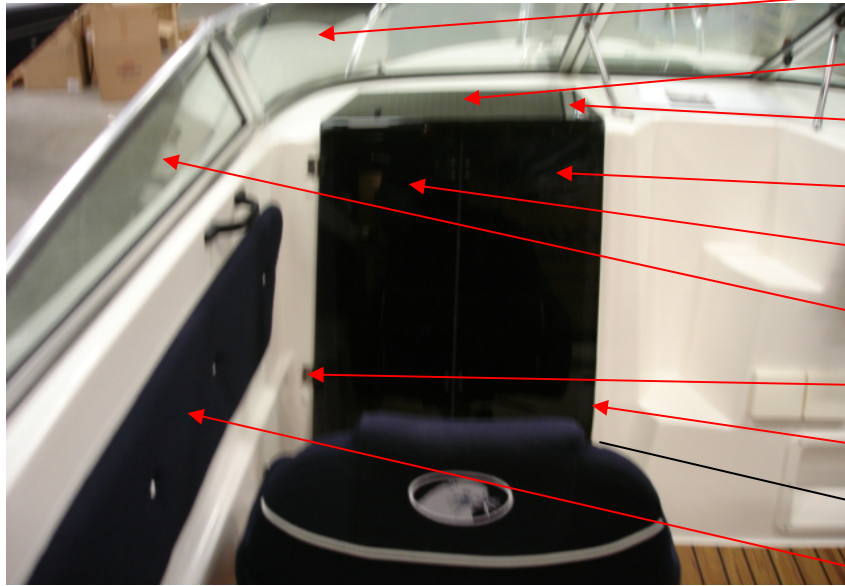
UTE 874283	COMPASS SILVA 58	1 PC
UTE 872224002	WINDSHIELD D51/D55/T55 SB CORNER	1 PC
UTE 872224001	WINDSHIELD D51/D55/T55 SB	1 PC
UTE 874800	STEER PANEL D55 06- HALF-MADE	1 PC
Q/S 879899K17	TACH/SPEEDO-WHITE SMARTCRAFT	1 PC
Q/S 879910K11	FUEL LEVEL-WHITE SMARTCRAFT	1 PC
UTE 877167	NORTHSTAR EXPLORER 650	1 PC
UTE 872224003	WINDSHIELD D51/D55 CENTERDOOR	1 PC
Q/S 879914K11	TRIM-WHITE SMARTCRAFT	1 PC
Q/S 896537K15	HARNESS ASY & KEY SWITCH 15FT	1 PC
Q/S 893353A03	KEY SWITCH KIT	1 PC



UTE 874799	INSTRUMENT PANEL UPPER D55/T55	1 PC
UTE 874802	INSTRUMENT PANEL LOWER D55/T55	1 PC
UTE 874408	HELM PUMP BAYSTAR	1 PC
Q/S 883709A02	REMOTE CONTROL SIDE MOUNTED	1 PC
Q/S 883719A12 (not in picture)	CABLE ASSY II 12 FT	1 PC
UTE 873748	SOCKET 12V ROUND FLUSH BLACK	1 PC
UTE 874763	CUP HOLDER EXTERNAL WHITE	2 PC
UTE 874764	CONTROL PLATE T/D55 2006- BLUE	1 PC
UTE 874508 (not in picture)	CABLE SYSTEM D55/T55 -05	1 PC
UTE 871287 (not in picture)	HANGING FUSE 20A	1 PC
UTE 871350 (not in picture)	FUSE 1A	1 PC



UTE 871340	SWITCH NAVIGATION NEUTRAL	1 PC
UTE 871338	SWITCH WINDSCREEN WIPER	1 PC
UTE 871339	SWITCH NAVIGATION LIGHTS	1 PC
UTE 873473	SWITCH BILGE PUMP	1 PC
UTE 873474 (not in picture)	MAIN SWITCH (ON)-OFF BILGE PUMP	1 PC
UTE 871336	SWITCH ON-OFF	2 PC
UTE 874509	FOOT-REST D55/T55	1 PC
(not in picture)		
UTE 874288 (not in picture)	CIRCUIT BREAKER 10A	1 PC
UTE 874287 (not in picture)	CIRCUIT BREAKER 5A	1 PC



- | | | |
|---------------|------------------------------------|-------|
| UTE 872224004 | WINDSHIELD D51/D55/T55 PORT CORNER | 1 PC |
| UTE 874511 | CABIN HATCH D55 PLEXI. | 1 PC |
| UTE 871827 | HATCH LOCK ABLOY | 1 PC |
| UTE 874512 | CABIN DOOR SB D55 PLEXI. | 1 PC |
| UTE 874513 | CABIN DOOR PORT D55 PLEXI. | 1 PC |
| UTE 872224005 | WINDSHIELD D51/D55/T55 PORT | 1 PC |
| UTE 871242 | HINGE 38X37 2+2 | 6 PC |
| UTE 872163 | SEALING TRIM 10X3 | 0,8 M |
| UTE 871750 | RUBBER STRETCHER FOR CANVAS | 2 PC |
| UTE 874765 | COCKPIT PLATE D55 2006- BLUE | 1 PC |



- | | | |
|------------|-------------------------------|------|
| UTE 874819 | STORAGE NET BLACK | 1 PC |
| UTE 874780 | DRIVER SEAT BLUE 06- | 2 PC |
| UTE 874793 | CE-PLATE UTTERN OB | 1 PC |
| UTE 873637 | FIRE EXTINGUISHER GLORIA 2 KG | 1 PC |
| UTE 873358 | DRIVER SEAT BASE | 2 PC |



UTE 875195 FOLD TABLE D55 OB 2 PC

UTE 871245 HINGE 59X37 3+2 4 PC

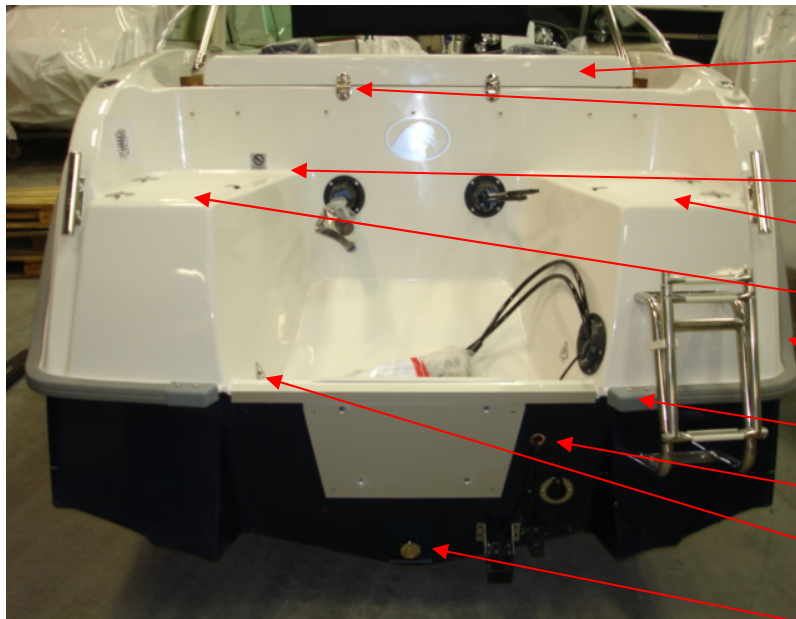
UTE 871664 TABLE SUPPORT RAKEGO 2 PC



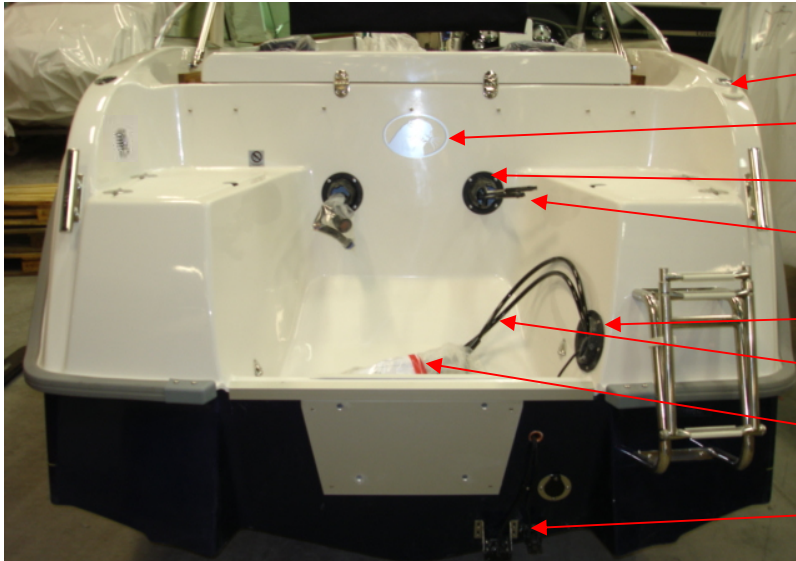
UTE 875111 AFTCANVAS D55 W.BOWS 07- 1 PC

Uttern D55 exkl Smartcraft model year 2008

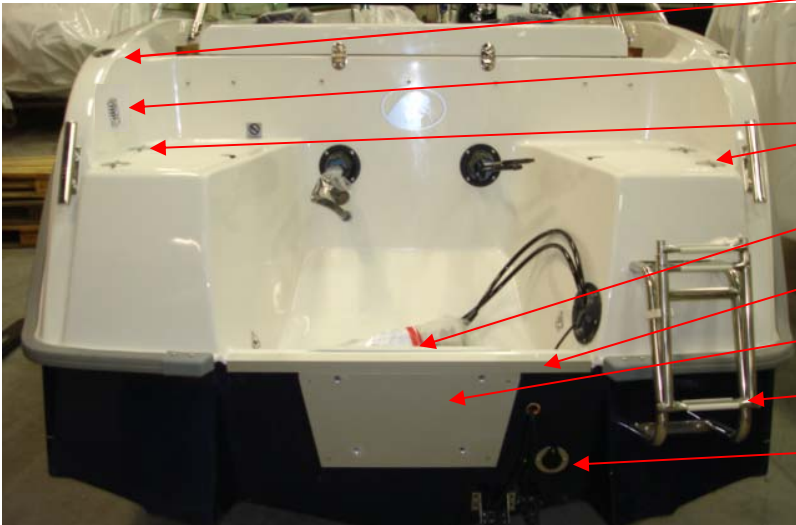
Aft



UTE 873146	HATCH 146	1 PC
UTE 871250	HINGE 74X39 2+2	4 PC/BOAT
UTE 873426	DECKFILL UNLEADED SS 38 MM	1 PC
UTE 873147	HATCH 147	1 PC
UTE 873149	HATCH 149	1 PC
UTE 873385	GUNNEL RUBBER 623 12,5 M SILVER-GREY	1 PC
UTE 873380	GUNNEL FITTINGS SILVER-GREY	2 PC
UTE 870905	THRU HULL FITTINGS 120 MM COPPER	1 PC
UTE 874770	CLAMSHELL COVER STAINLESS	2 PC
UTE 873283	DYVIKA KOMPL NR 501	1 PC



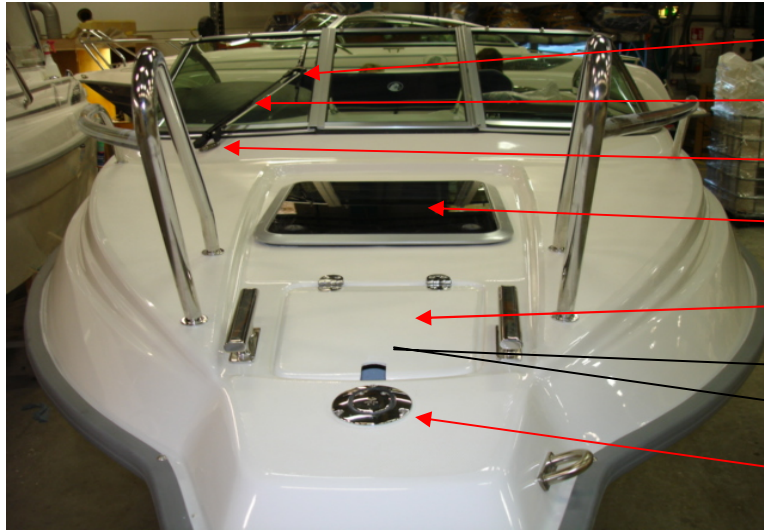
- UTE 875119 ROUND BASE FOR POLE WHITE 1 PC
- UTE 873453 DECAL UTTERN HEAD SILVER BIG 1 PC
- UTE 871770 CABLE BUSHING FOR BOOT HOP100 MM 2 PC
- Q/S 883719A12 CABLE ASSY II 12 FT 2 PC
- UTE 871771 CABLE BUSHING FOR BOOT 140 MM OUTSID 1 PC
- UTE 874554 HOSE 18" BAYSTAR 2 PC
- UTE 874553 CYLINDER COMPACT BAYSTAR 1 PC
- Q/S 859223 SENSOR-SPEED/TEMP 1 PC



- UTE 871702 FLAG HOLDER ATTACHMENT SS 1 PC
- UTE 877132 LOUVERED VENT 82X82 STAINLESS 1 PC
- UTE 877133 LOUVERED VENT HOSE ADAP 1 PC
- UTE 875212 HINGE 74X39 CENTER (2+2) 4 PC
- UTE 875078 ENGINE PLATE A ALU 1 PC
- UTE 875084 ALU PROFILE A 55 1 PC
- UTE 870840 ENGINE PLATE OUTSIDE 022 1 PC
- UTE 874281 BOARDING LADDER TELESCOPE 1 PC
- UTE 871642 ANTI-SYPHONE VALVE SELF-BAILING DEVIC 1 PC

Uttern D55 exkl Smartcraft model year 2008

Fore



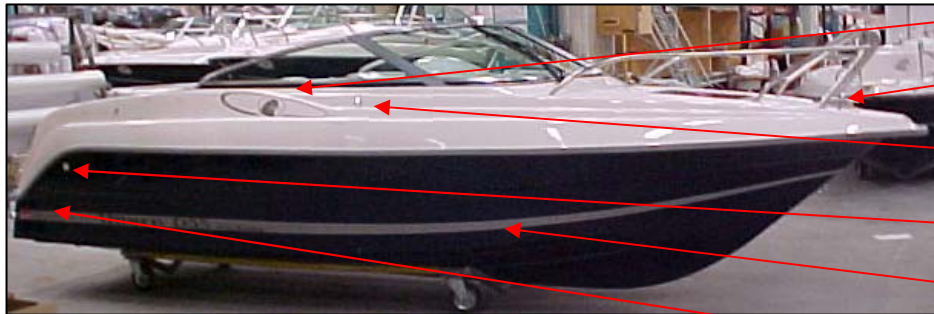
UTE 874436	WINDSCREEN WIPER BLADES 405	1 PC
UTE 874438	WINDSCREEN WIPER ARMS 370-470	1 PC
UTE 871981	WINDSCREEN WIPER ENGINE 38L	1 PC
UTE 871921	SKY LIGHT HATCH ULTRA HATCH D55	1 PC
UTE 872817	ANCHOR HATCH FORE	1 PC
UTE 871652	FITTING STRING WITH CLIP	1 PC
UTE 872681	PAD EYE 38X13 MM	2 PC
UTE 874625	NAV.LIGHTS POP-UP 12M	1 PC

Uttern D55 exkl Smartcraft model year 2008

Starboard side



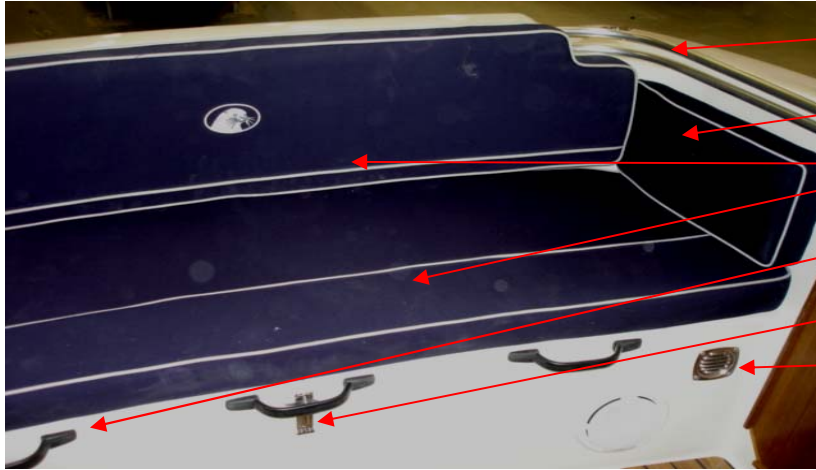
UTE 870667	BOW RAIL D55 (PAIR)	1 PAIR
UTE 873469	BOWEYE CLASS 3 12 MM LOCK NUT	1 PC
UTE 874625	NAV.LIGHTS POP-UP 12M	1 PC
UTE 871936	BOW EYE 12 MM SS	1 PC
UTE 874770	CLAMSHELL COVER STAINLESS	1 PC



UTE 873455	DECAL UTTERN HEAD ENCIRCLED SILVER	1 PAIR
UTE 873463	CLEAT 205X55 MM	4 PC/BOAT
UTE 871699	FENDER ATTACHMENT	4 PC
UTT 873475	ACCESSORY BAG COMPLETE	1 PC
UTE 873442	STREIP "D55" SILVER	1 PAIR
UTE 875220	STREIP "D55 EXCLUSIVE" BLUE	1 PAIR
UTE 873539	DECAL "BY M" LARGE MODEL	2 PC

Uttern D55 exkl Smartcraft model year 2008

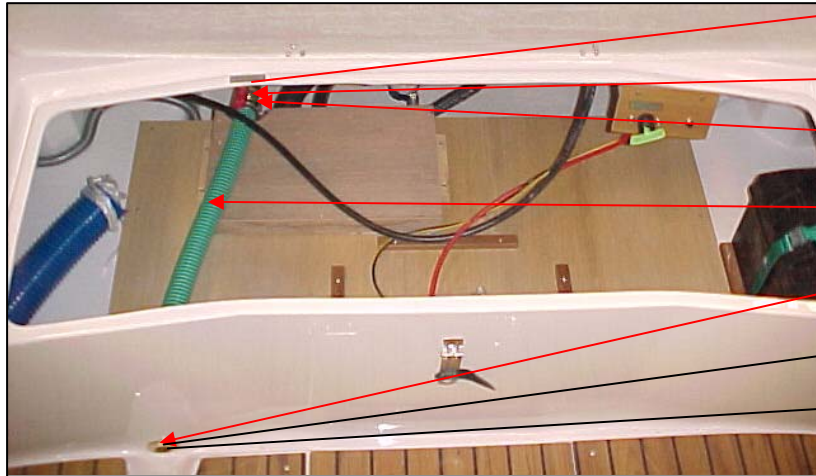
Seats aft



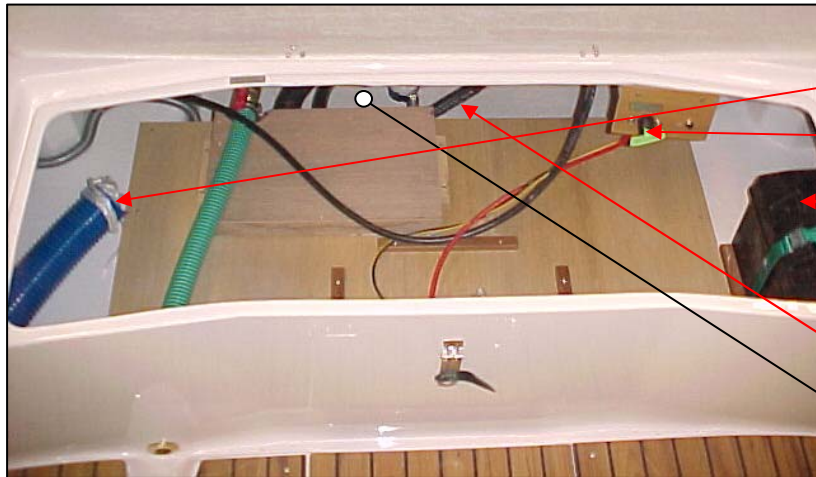
UTE 875111	AFTCANVAS D55 W.BOWS 07-	1 PC
UTE 877119	UPHOLSTERY D/T55 OB BLUE AFT	1 PC
UTE 874767	UPHOLSTERY AFT OB55 2006- BLUE	1 SATS
UTE 871757	HANDLE INSIDE BLACK/PLASTIC	4ST/BOAT
UTE 872682	PADLOCK SS LONG	1 PC
UTE 877132	LOUVERED VENT 82X82 STAINLESS	2 PC



UTE 873145	HATCH 145	1 PC
UTE 874813	HINGE 107X39 CENT (3+2)	2 PC
UTE 872146	U-TRIM WITH HIGH TOP SEALER	3,2 M
(not in picture)	FLOOR FITTING W/O BOLT SPRING	2 PC
UTE 875249	FLOOR FITTING W/O BOLT SPRING	2 PC
UTE 875250	BOLT FLOOR FITTING (SPRING MOD)	2 PC
UTE 877130	FLOOR SET D55OB/D55IB 08-	1 SET



- UTE 871176 BAILING TUBE 5500 DC 1 PC
- UTE 871622 SHUT OFF VALVE 1" 1 PC
- UTE 871632 HOSE ADAPTER 1" 32 MM HOSE 1 PC
- UTE 872178 HOSE 32 MM SELF BAILING 0,75 M
- UTE 871612 THRU HULL FITTINGS 1" CONVEX 1 PC
- UTE 871632 HOSE ADAPTER 1" 32 MM HOSE 1 PC
- UTE 871629 TUBE SOCKET 1" 1 PC



- UTE 873260 FUEL HOSE 16MM A1 1,7 m
- (not in picture) tank ventilation
- UTE 874317 FUEL HOSE 38 A1 1,25 M 1 PC
- UTE 872704 MAIN POWER SWITCH 1 PC
- UTE 871650 BATTERY BOX 1 PC
- UTE 873261 FUEL HOSE 10MM A1 1,85 M
- (not in picture)
- UTE 874463 FUEL TANK 90 L PLASTIC GASOLINE 1 PC
- (not in picture)
- UTE 872176 HOSE 19 MM GREY FOLDED 1,7 M
- (not in picture) for bilge pump
- UTE 873552 BILGE PUMP 500 1 PC

Additional information

Documents

UTE 871559	DECAL SET ALU-COLOURED W.BLACK PRINT	1 PC
UTE 870547	FOLDER WITH ZIPPER	1 PC
UTE 873262	USER MANUAL SWEDISH	1 PC
Q/S 88285513U	POLY BOAT OG SUP UTTERN	1 PC
Q/S 8828553WU	UTTERN WARRANTY SUPPLEMENT	1 PC
Q/S 83004243	WARRANTY CARD	1 PC

UTE 875107	ACCESSORIES BAG C1	1 PC
-------------------	--------------------	------

Parts in bag:

UTE 871215	ANCHOR 5,5 KG	1 PC
UTE 871223	ANCHOR ROPE 30MX10MM	1 PC
UTE 871229	MOORING ROPE 4MX12MM	1 PC
UTE 871230	MOORING ROPE 10MX12MM	1 PC
UTE 871226	FENDER LINE 4x1,5MT	1 PC
UTE 871695	FENDER 15X51 CM WHITE G-3	1 ST
UTE 871955	ACCESSORY BAG	1 PC
UTE 874290	UTTERN BAG	1 PC

UTE 875117	ALL-ROUND POLE LIGHT 48"	1 PC
UTE 877101	STEER. WHEEL FERARRA 800 BLACK	1 PC
UTE 877168	DEPTH TRANCDUCER THRU-HULL	1 PC
Q/S 859223	SENSOR-SPEED/TEMP	1 PC
Q/S 859743T2	HARNES ASSY BOAT INSTRUMENTS	1 PC
Q/S 891777A01	TRIM SENDER KIT - 1.5L OPTI	1 PC
Q/S 881879A12	PITOT SENSOR KIT-1.5L	1 PC