

# Uttern C68 dti model year 2005

Parts catalogue



## Revision history

2003-12-12 First release

2004-12-23 Update for 2005 ready

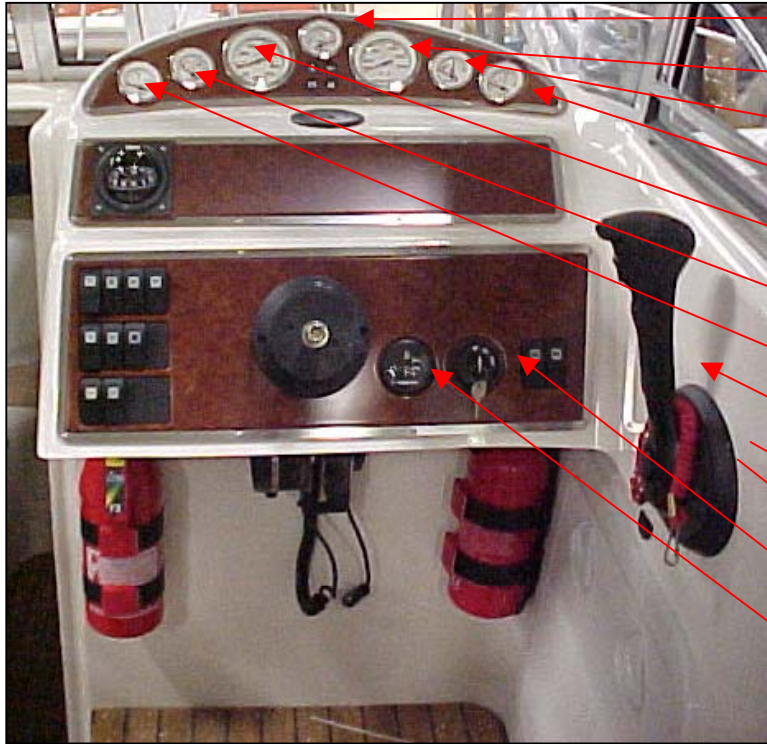


# Uttern C68 dti model year 2005

## Cabin and steering panel



|            |                                 |      |
|------------|---------------------------------|------|
| UTE 874344 | INSTRUMENT PANEL UPPER C68 DTI  | 1 PC |
| UTE 873611 | STEERING PANEL C68              | 1 PC |
| UTE 874342 | INSTRUMENT PANEL MIDDLE C68 DTI | 1 PC |
| UTE 874345 | INSTRUMENT PANEL LOWER C68 DTI  | 1 PC |
| UTE 874488 | STEERING HELM QC SAFE-T         | 1 PC |
| UTE 874491 | STEERING CABLE 5,18 M (17 FT)   | 1 PC |
| UTE 874489 | BEXEL QC SAFE-T                 | 1 PC |
| UTE 873491 | COMPASS SILVA 70P               | 1 PC |
| UTE 873636 | FIRE EXTINGUISHER PRIMEX 2 KG   | 1 PC |
| UTE 873637 | FIRE EXTINGUISHER GLORIA 2 KG   | 1 PC |
| UTE 874099 | INSPECTION LID 463X517 C68      | 1 PC |



|                |                               |      |
|----------------|-------------------------------|------|
| UTE 873303     | POWER TRIM GAUGES CHROME/WHIT | 1 PC |
| UTE 873300     | GAUGE-SPEEDOMETER CHROME/WH   | 1 PC |
| UTE 873302     | FUEL GAUGE CHROME/WHITE       | 1 PC |
| UTE 873306     | TEMP GAUGE CR/VIT             | 1 PC |
| UTE 873301     | GAUGE-TACHOMETER CHROME/WHIT  | 1 PC |
| UTE873304      | ACCESSORY BAG COMPLETE        | 1 PC |
| UTE 873305     | OIL PRESSURE GAUGE CHROME/WHI | 1 PC |
| Q/S 883709A03  | REMOTE CONTROL SIDE MOUNTED   | 1 PC |
| Q/S 883720A14  | CABLE ASSY II 14 FT PLATINUM  | 1 PC |
| not in picture |                               |      |
| Q/S 883720A12  | CABLE ASSY II 12 FT PLATINUM  | 1 PC |
| not in picture |                               |      |
| Q/S 54212A7    | IGNITION SWITCH               | 1 PC |
| UTE 874521     | HOURMETER DTI CHROME/WHITE    | 1 PC |





|                              |                                |           |
|------------------------------|--------------------------------|-----------|
| UTE 873315                   | SWITCH INSTRUMENT LIGHTING     | 1 PC      |
| UTE 871339                   | SWITCH NAVIGATION LIGHTS       | 1 PC      |
| UTE 871337                   | SWITCH ENGINE BLOWER           | 1 PC      |
| UTE 873473                   | SWITCH BILGE PUMP              | 1 PC      |
| UTE 874406<br>not in picture | MAIN SWITCH OFF-ON-ON          | 4 PC      |
| UTE 871338                   | SWITCH WINDSCREEN WIPER        | 2 PC      |
| UTE 873606                   | SWITCH FAN                     | 1 PC      |
| UTE 874359                   | SWITCH TRIMFLAP                | 2 PC      |
| UTE 873748                   | SOCKET 12V ROUND FLUSH BLACK   | 5 PC/BOAT |
| UTE 871336<br>not in picture | MAIN SWITCH ON-OFF WITHOUT PUS | 2 PC      |
| UTE 874357                   | SWITCH AUDIO TEST DTI          | 1 PC      |
| UTE 874356                   | SWITCH STOP DTI                | 1 PC      |

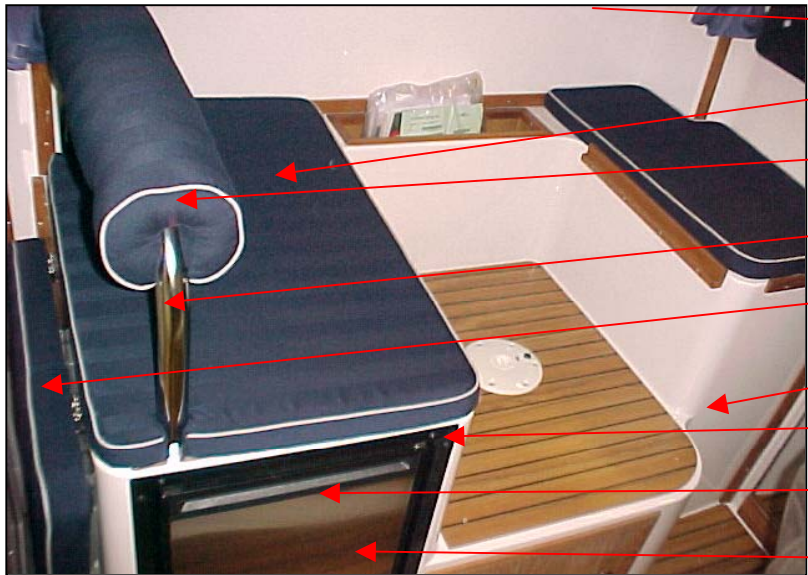
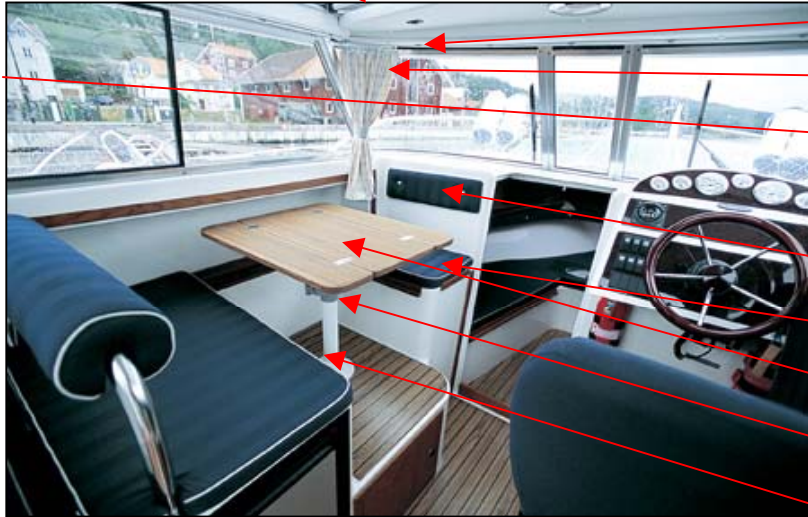






|                                |                                  |       |
|--------------------------------|----------------------------------|-------|
| UTE 873474                     | MAIN SWITCH (ON)-OFF BILGE PUMP  | 3 PC  |
| UTE 874358<br>not in picture   | SWITCH (ON)-OFF-(ON)             | 2 PC  |
| UTE 871341                     | FRAME FOR EL PANEL SIDE          | 2 PC  |
| UTE 874537<br>not in picture   | NAVMAN PRERIG. KIT TRACKER 5500I | 1 PC  |
| UTE 873488                     | STEERING CONSOLE A2002 ONLY PL3  | 3 PC  |
| UTE 871342                     | FRAME FOR EL PANEL MIDDLE        | 2 PC  |
| UTE 874089<br>not in picture   | FUSE PANEL C68/D68               | 1 PC  |
| Q/S 881125A1<br>not in picture | CABLE SYSTEM POWERTRIM 7,2 M     | 7,2 M |
| UTE 873853                     | CLAMP FOR PORTABLE LIGHT         | 1 PC  |
| UTE 873634                     | PORTABLE LIGHT 12V/W55           | 1 PC  |





- UTE 873582 ROOF HATCH C68 2 PC
- UTE 873942 CURTAIN RUNAWAY CURVED C68 1 PC
- UTE 873788 CURTAINS 5 PCS COCKPIT+CABIN C6 1 SET
- UTE873787 ACCESSORY BAG COMPLETE 1 SET  
not in picture
- UTE 873719 MOUNTING KIT CURTAIN RUNAWAY ( 2,3 PC  
not in picture
- UTE 874106 CUSHION DINETT C68 BACKREST 1 PC
- UTE 874105 CUSHION DINETT C68 FRONT SEAT 1 PC
- UTE 874123 TABLE-TOP D68 1 PC
- UTE 874371 TABLE STAND TELESCOPIC -04 1 PC
- UTE 874372 SOCKET FOR TABLE -04 1 PC
- UTE 874129 USER MANUAL MPI SWEDISH 1 PC  
not in picture
- UTE 874103 CUSHION COCKPIT C68 REAR SEAT 1 PC
- UTE 874104 CUSHION DINETT C68 BACKREST CYL 1 PC
- UTE 873609 BACKREST SS C68 1 PC
- UTE 874102 CUSHION COCKPIT C68 FOLDING 1 PC  
not in picture
- UTE 874168 DINETT C68 PLASTIC PART ONLY 1 PC
- UTE 874121 FRAME FOR REFRIGERATOR 50 L 1 PC
- UTE 874122 FRONT SS REFRIGERATOR RPD50 1 PC
- UTE 874120 REFRIGERATOR 12V 50 L RPD0050E 1 PC





|                              |                                  |      |
|------------------------------|----------------------------------|------|
| UTE 871405<br>not in picture | CE-PLATE UTTERN                  | 1 PC |
| UTE 874119                   | DRIVER SEAT C68 -03              | 1 PC |
| UTE 873603<br>not in picture | WATER TANK 10L                   | 2 PC |
| UTE 874171                   | PENTRY UPPER C68 PLASTIC PART C  | 1 PC |
| UTE 873607                   | WATER TAP                        | 1 PC |
| UTE 873608<br>not in picture | WATER PUMP                       | 1 PC |
| UTE 874125                   | WASHING-UP SINK 354X249 C68      | 1 PC |
| UTE 874127                   | SLIDE FOR SEAT                   | 1 PC |
| UTE 874170                   | PENTRY C68 PLASTIC PART ONLY     | 1 PC |
| UTE 874140<br>not in picture | SEWAGE CURVE FOR WASING-UP SIN   | 1 PC |
| UTE 873595                   | SPIRIT HEATER ORIGO 3000         | 1 PC |
| UTE 870892<br>not in picture | FLAME COVER FOR SPIRIT HEATER C  | 1 PC |
| UTE 872358<br>not in picture | HOT-AIR UNIT PASSAD              | 1 PC |
| UTE 872360<br>not in picture | HOT-AIR HOSE 50 FOR HOT-AIR UNIT | 1 PC |
| UTE 872359                   | JET PASSAD HOT-AIR UNIT          | 1 PC |



- UTE 874166 BOARDING LADDER 2-STEP TELESCC 1 PC
- UTE 873650 READING LAMP CHROME? BRASS 2 PC
- UTE 874108 CUSHION CABIN C68/D68 HATCH (4 PI 1 SET
- UTE 874109 CUSHION CABIN C68/D68 BACKREST : 1 SET
- UTE 874107 CUSHION BED C68 FOLDING 1 PC  
not in picture
- UTE 874180 CUSHION CABIN C68 4PCS 1 SET

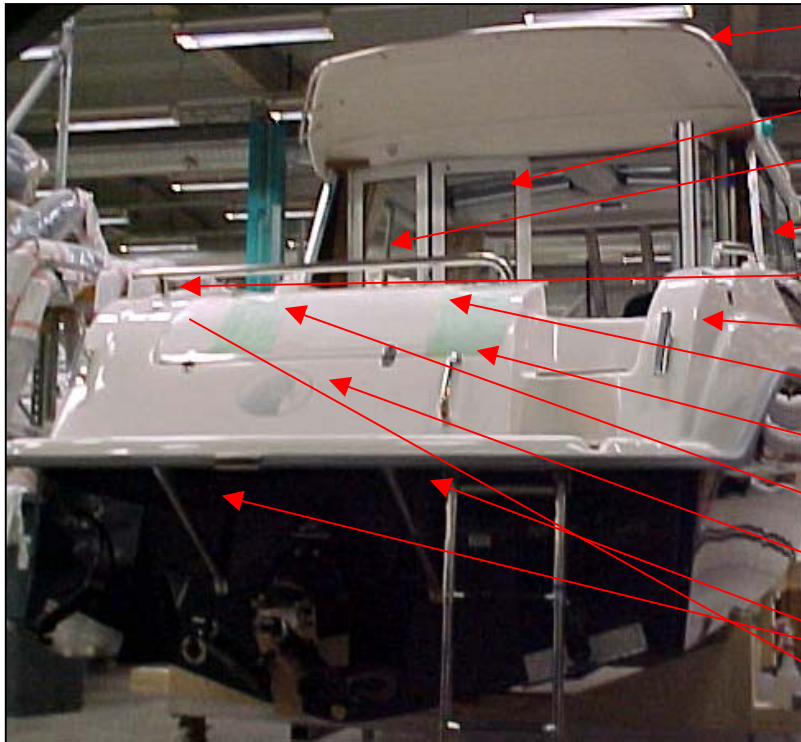


- UTE 873745 MIRROR WITH TEAKFRAME 280X380 M 1 PC
- UTE 874111 CUSHION CABIN C68 EXTENSION 1 PC



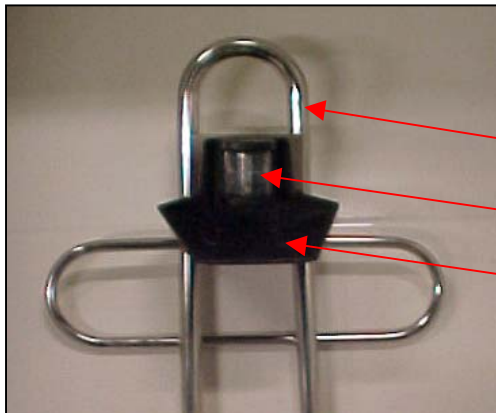
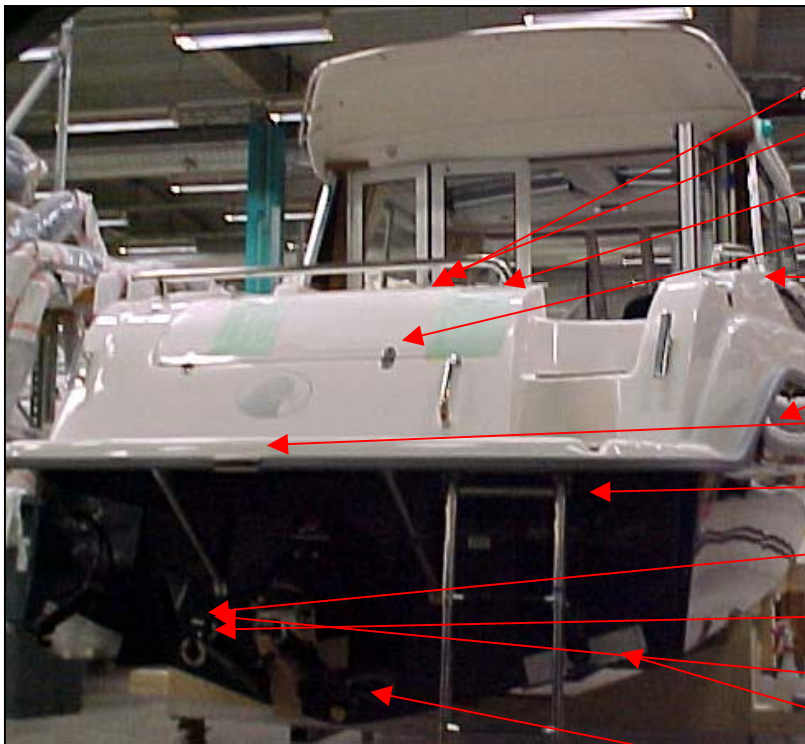
# Uttern C68 dti model year 2005

Aft



|            |                              |           |
|------------|------------------------------|-----------|
| UTE 873859 | ROOF C68 COMPLETE WITH HATC  | 1 PC      |
| UTE 873614 | CABIN DOORS C68              | 1 PC      |
| UTE 873622 | AFT RAIL PORT C68/D68        | 1 PC      |
| UTE 873621 | AFT RAIL S/B C68/D68         | 1 PC      |
| UTE 871702 | FLAG HOLDER ATTACHMENT SS    | 1 PC      |
| UTE 873463 | CLEAT 205X55 MM              | 4 PC/BOAT |
| UTE 873939 | STORAGE SPACE ANCHOR BOX     | 1 PC      |
| UTE 871758 | HANDLE SS 200 MM             | 1 PC      |
| UTE 874370 | HATCH ANCHOR BOX AFT C68/D68 | 1 PC      |
| UTE 873497 | DECAL UTTERN HEAD SILVER VEF | 1 PC      |
| UTE 873623 | SUPPORT TUBE FOR BATHING PL  | 2 PC      |
| UTE 873692 | HATCH ADJUSTER               | 1 PC      |

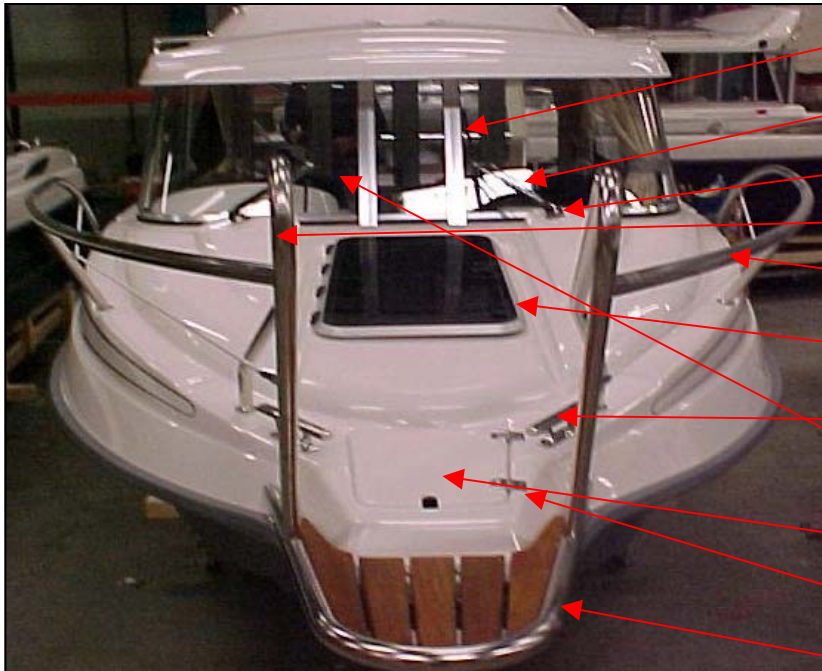




|            |                               |        |
|------------|-------------------------------|--------|
| UTE 871694 | ECCENTRIC LOCK ADJUSTABLE     | 2 PC   |
| UTE 871821 | LOCK FITTINGS FOR ECCENTRIC I | 2 PC   |
| Q/S 829624 | PLUG-IN BASE                  | 1 PC   |
| UTE 871242 | HINGE 38X37 2+2               | 2 PC   |
| UTE 873426 | DECKFILL UNLEADED SS 38 MM    | 1 PC   |
| UTE 873386 | GUNNEL RUBBER 632 15 M SILVEF | 1 PC   |
| UTE 873631 | GUNNEL FITTINGS SS C68/D68    | 1 PC   |
| UTE 874326 | BOARDING LADDER 3-STEP COMP   | 1 PC   |
| UTE 871642 | ANTI-SYPHONE VALVE SELF-BAILI | 1 PC   |
| UTE 871612 | THRU HULL FITTINGS 1" CONVEX  | 1 PC   |
| UTE 871629 | TUBE SOCKET 1"                | 1 PC   |
| UTE 871968 | TRIM FLAP INSTA. 12X8         | 1 PAIR |
| UTE 873283 | DRAINING PLUG NR 501          | 1 PC   |
| UTE 874128 | NAVIGATION LIGHTS C68 TOP     | 1 PC   |
| UTE 871212 | NAVIGATION LIGHT 7M TOP       | 1 PC   |
| UTE 871654 | ANTI GLARE DEVICE SMALL       | 1 PC   |
| UTE 871205 | NAVIGATION LIGHT 7M AFT       | 1 PC   |
|            | not in picture                |        |

# Uttern C68 dti model year 2005

Fore

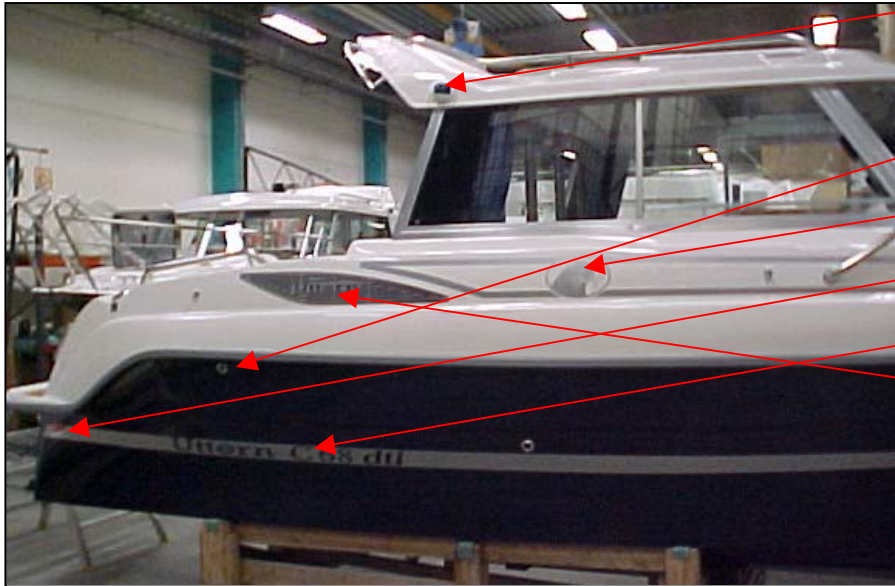


|            |                               |           |
|------------|-------------------------------|-----------|
| UTE 874436 | WINDSCREEN WIPER BLADES 405   | 2 PC      |
| UTE 874438 | WINDSCREEN WIPER ARMS 370-470 | 2 PC      |
| UTE 871981 | WINDSCREEN WIPER ENGINE 38L   | 2 PC      |
| UTE 874094 | BOW RAIL S/B C68 -03          | 1 PC      |
| UTE 874095 | BOW RAIL PORT C68 -03         | 1 PC      |
| UTE 874097 | HATCH 1025X520 MM C68         | 1 PC      |
| UTE 873463 | CLEAT 205X55 MM               | 4 PC/BOAT |
| UTE 873563 | WINDSHIELD C68 TAYLOR         | 1 SET     |
| UTE 872817 | ANCHOR HATCH FORE             | 1 PC      |
| UTE 871248 | HINGE 67X39 2+2 STREIGHT      | 2 PC      |
| UTE 873616 | BOW RAIL C68                  | 1 PC      |



# Uttern C68 dti model year 2005

Starboard side



|                              |                                      |      |
|------------------------------|--------------------------------------|------|
| UTE 874519                   | NAVIGATIONS LIGHT 12 M GREEN CRYSTAL | 1 PC |
| UTE 874518<br>not in picture | NAVIGATIONS LIGHT 12 M RED CRYSTAL   | 1 PC |
| UTE 872989                   | FUEL TANK VENT ATTWOOD               | 1 PC |
| UTE 873646                   | STREIP "68" SILVER FOR DECK          | 1 PC |
| UTE 873539                   | DECAL "BY M" LARGE MODEL             | 2 PC |
| UTE 874043                   | STREIP "C68" DTI SILVER              | 2 PC |
| UTE 874529                   | VENTILATION GRID SB                  | 1 PC |
| UTE 874530<br>not in picture | VENTILATION GRID PORT                | 1 PC |





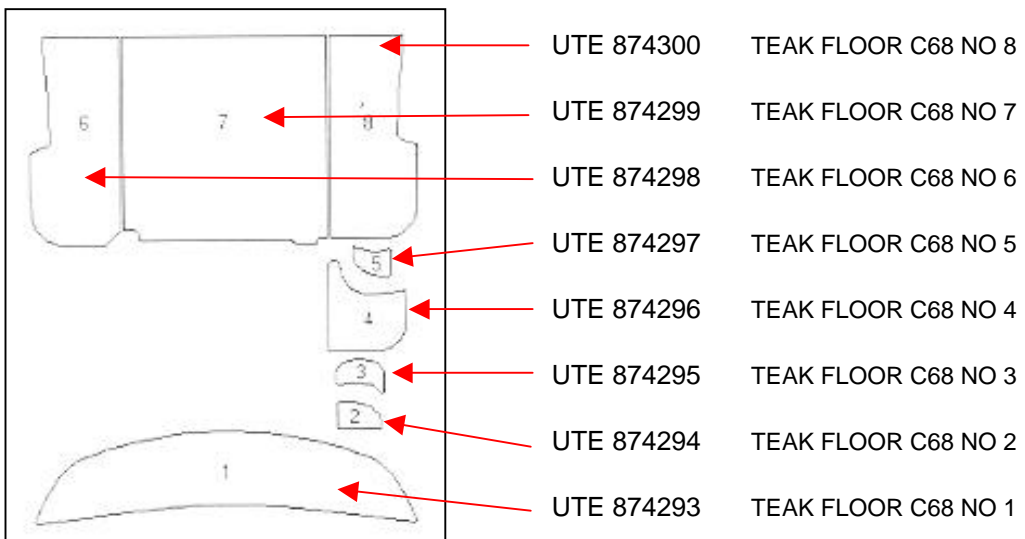


|                 |                                    |      |
|-----------------|------------------------------------|------|
| UTE 871699      | FENDER ATTACHMENT                  | 4 PC |
| UTE 873469      | BOWEYE CLASS 3 12 MM LOCK NUT      | 1 PC |
| UTE 871936      | BOW EYE 12 MM SS                   | 1 PC |
| Not in picture: |                                    |      |
| UTE 871660      | THRU HULL FITTINGS 3/4 PLASTIC     | 2 PC |
| UTE 873643      | THRU HULL FITTINGS 1" SS/PLASTIC   | 4 PC |
| UTE 873642      | THRU HULL FITTINGS 3/4" SS/PLASTIC | 2 PC |
| UTE 872002      | LOUVER WITH ADAP. 90X90 WHITE      | 1 PC |



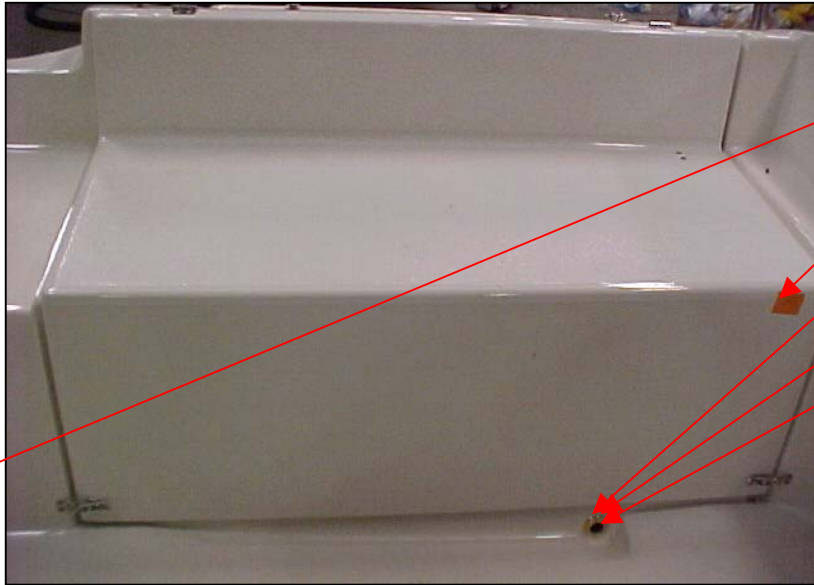
# Uttern C68 dti model year 2005

## Teak floor



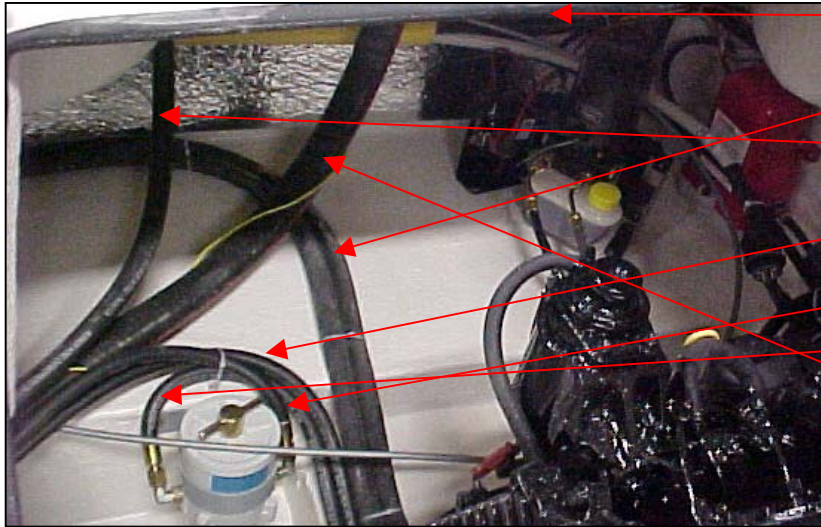
# Uttern C68 dti model year 2005

Seats aft/engine hatch



|                              |                                |      |
|------------------------------|--------------------------------|------|
| UTE 873464<br>not in picture | INSPEKTION LID 275X375 NOVARAI | 1 PC |
| UTE 873752                   | ENGINE HATCH 752 C68/D68       | 1 PC |
| UTE 871612                   | THRU HULL FITTINGS 1" CONVEX   | 1 PC |
| UTE 871632                   | HOSE ADAPTER 1" 32 MM HOSE     | 1 PC |
| UTE 871629                   | TUBE SOCKET 1"                 | 1 PC |
| UTE 873465<br>not in picture | INSPECTION LID 355X600 NOVARA  | 1 PC |





|            |                          |        |
|------------|--------------------------|--------|
| UTE 871620 | KOPPARRÖR 8X0,8          | 2 PC   |
| UTE 873846 | KYLARSLANG 16 MM 3,5 M   | 2 PC   |
| UTE 873260 | 16MM BRÄNSLESLANG A1     | 1,35 M |
| UTE 873483 | BRÄNSLESLANG 8 MM        | 1,85 M |
| UTE 874067 | BRÄNSLESLANG DTI 650 MM  | 1 PC   |
| UTE 874068 | BRÄNSLESLANG DTI 1100 MM | 1 PC   |
| UTE 873562 | SLANG 38 MM KAPAD 1,6 M  | 1 PC   |

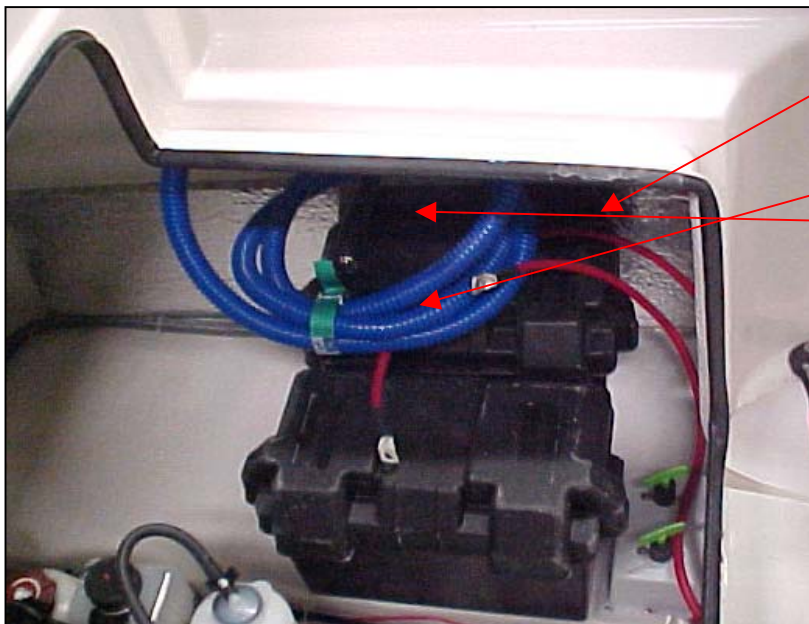


|            |                         |        |
|------------|-------------------------|--------|
| UTE 871857 | FAN MOTOR COMPARTMENT   | 1 PC   |
| UTE 872182 | HOSE 75 MM GREY 6 M     | 2,2 M  |
| UTE 872178 | HOSE 32 MM SELF BAILING | 0,52 M |

Under motorn:

|            |                              |       |
|------------|------------------------------|-------|
| UTE 873400 | BILGE PUMP 500 FULLY AUTOMAT | 1 PC  |
| UTE 872176 | HOSE 19 MM GREY FOLDED       | 2,3 M |





UTE 871650 BATTERY BOX 2 PC

UTE 873400 BILGE PUMP 500 FULLY AUTOMAT 1 PC

UTE 872177 HOSE 25 MM BLUE (BAILING PUMF 2 PC

UTE 871851 BILGE PUMP MANUAL URSIN 1 PC

not in picture:

UTE 873417 FUEL TANK 190 L SS WITH SENDIN 1 PC

UTE 874100 CUSHION AFT C68 SEAT 1 PC

UTE 874101 CUSHION AFT C68 BACKREST 1 PC

UTE 871622 SHUT OFF VALVE 1" 1 PC

UTE 871632 HOSE ADAPTER 1" 32 MM HOSE 1 PC

## Additional information

### Documents

|               |                                      |      |
|---------------|--------------------------------------|------|
| UTE 871559    | DECAL SET ALU-COLOURED W.BLACK PRINT | 1 PC |
| UTE 873917    | DECALS D68                           | 1 PC |
| UTE 870547    | FOLDER WITH ZIPPER                   | 1 PC |
| UTE 873262    | USER MANUAL SWEDISH                  | 1 PC |
| Q/S 88285504U | POLY BOAT OG SUP UTTERN              | 1 PC |
| Q/S 8828553WU | UTTERN WARRANTY SUPPLEMENT           | 1 PC |
| Q/S 83004243  | WARRANTY CARD                        | 1 PC |
| UTE 874143    | USER MANUAL DTI SWEDISH              | 1 PC |

|                  |                        |      |
|------------------|------------------------|------|
| <b>UTE-D9054</b> | ACCESSORY BAG COMPLETE | 1 PC |
|------------------|------------------------|------|

#### Parts in bag:

|            |                       |      |
|------------|-----------------------|------|
| UTE 873381 | ANCHOR 10 KG          | 1 PC |
| UTE 871224 | ANCHOR ROPE 35MX12MM  | 1 PC |
| UTE 873389 | MOORING ROPE 4MX14MM  | 1 PC |
| UTE 873390 | MOORING ROPE 10MX14MM | 1 PC |
| UTE 871226 | FENDER LINE 4x1,5MT   | 1 PC |
| UTE 871955 | ACCESSORY BAG         | 1 PC |
| UTE 874290 | UTTERN BAG            | 1 PC |

|               |                                |      |
|---------------|--------------------------------|------|
| Q/S 886600    | ALL- ROUND POLE LIGHT          | 1 PC |
| UTE 873728    | HOOK DOUBLE CHROME?            | 2 PC |
| UTE 873895    | BOAT HOOK 120-220 CM           | 1 PC |
| Q/S 832830A45 | PROP 14½X19" BLKMX             | 1 PC |
| UTE 874013    | STEERING WHEEL DARK MAHOGNY/SS | 1 PC |
| UTE 871690    | SOCKET 12V FLUSH               | 1 PC |
| UTE 871696    | FENDER 15X63 CM WHITE F-1      | 4 PC |
| UTE 874538    | TRACKGUARD TRANSMITTER         | 1 PC |
| UTE 873603    | WATER TANK 10L                 | 2 PC |
| UTE 873885    | PORTA POTTI 335                | 1 PC |
| UTE 872169    | HOSE 10 MM ARMOURED PVC        | 6 M  |
| UTE 871696    | FENDER 15X63 CM WHITE F-1      | 4 PC |
| UTE 872940    | FENDER BASKET 170 MM           | 4 PC |
| UTE 873901    | SPRING CLAMP 30 MM 2-PIECES    | 6 PC |
| UTE 873902    | FENDER BASKET CONNECTOR        | 2 PC |

