

Uttern C56 model year 2007

Parts catalogue



Revision history

2003-12-12 First release

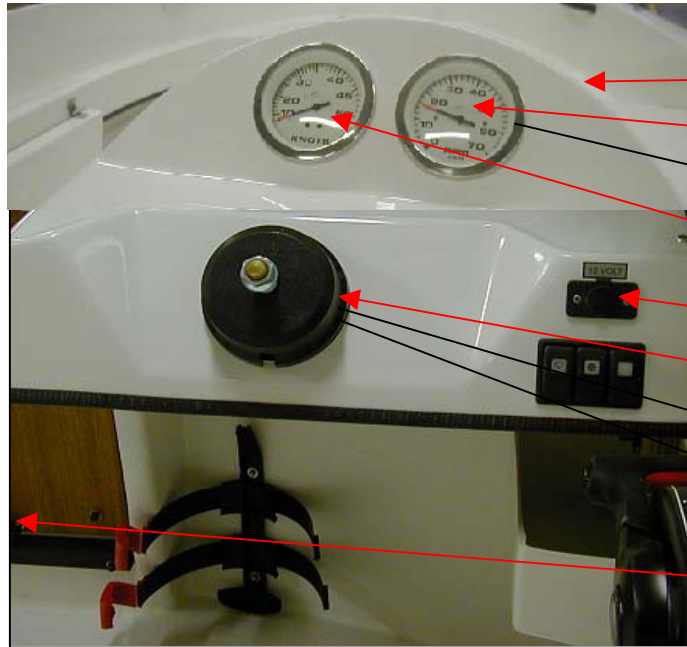
2004-12-23 Update for 2005 ready

2005-12-09 Update for 2006 ready

2007-02-02 Update for 2007 ready

Uttern C56 model year 2007

Cabin and steering panel



| | | |
|-------------|--------------------------------------|------|
| UTE 873488 | STEERING CONSOLE A2002 ONLY PLSTIC P | 1 PC |
| UTE 873422 | TACHOMETER BLACK/BLACK | 1 PC |
| Q/S 86396A8 | HARNESS KIT | 1 PC |
| UTE 873421 | SPEEDOMETER BLACKBLACK | 1 PC |
| UTE 871690 | SOCKET 12V FLUSH | 1 PC |
| UTE 874488 | STEERING HELM QC SAFE-T | 1 PC |
| UTE 874489 | BEXEL QC SAFE-T | 1 PC |
| UTE 874490 | STEERING CABLE 3,96 M (13 FT) | 1 PC |
| UTE 873694 | SHOCK ABSORBER 150N DOOR | 1 PC |



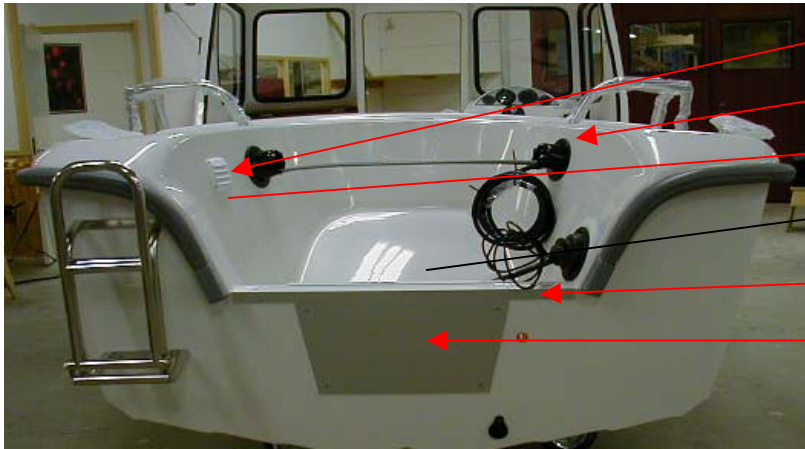
- UTE 871336 SWITCH ON-OFF 3 PC
- UTE 871342 FRAME FOR EL PANEL MIDDLE 1 PC
- UTE 871341 FRAME FOR EL PANEL SIDE 2 PC
- UTE 871338 SWITCH WINDSCREEN WIPER 1 PC
- UTE 871339 SWITCH NAVIGATION LIGHTS 1 PC
- UTE 871340 SWITCH NAVIGATION NEUTRAL 1 PC
- Q/S 16900A15 REMOTE CONTROL WITH POWERTRIM 1 PC
- Q/S 808630A11 CONNECTOR-3/8-18 MALE
ej i bild 2 PC



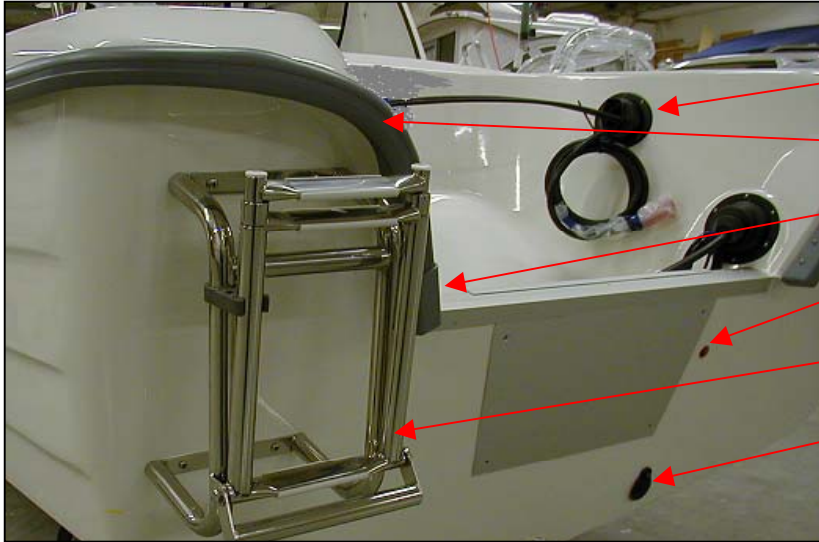
- UTE 870752 STEERING WHEEL SOFT V38 BLACK 1 PC
- UTE 871773 CABLE BUSHING WHITE 87 MM PLASTIC 1 PC
- UTE 871671 FIRE EXTINGUISHER 2 KG 1 PC

Uttern C56 model year 2007

Aft



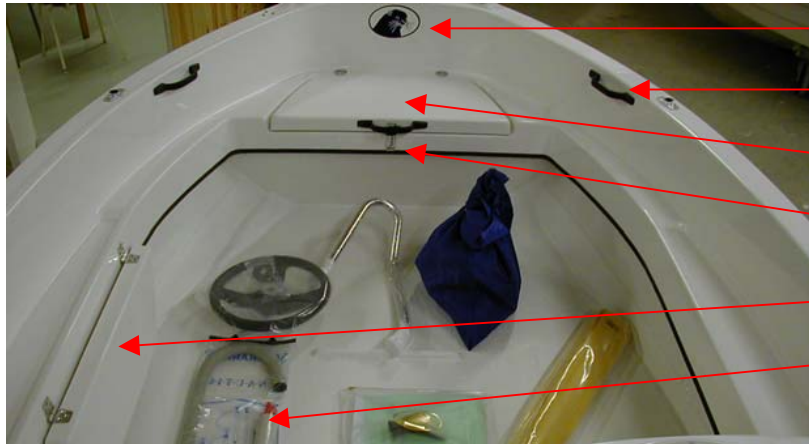
| | | |
|------------|--------------------------------------|------|
| UTE 872002 | LOUVER WITH ADAP. 90X90 WHITE | 1 PC |
| UTE 871770 | CABLE BUSHING FOR BOOT HOP100 MM | 2 PC |
| UTE 872182 | HOSE 75 MM GREY 6 M | 1 MT |
| UTE 870819 | ALU PROFILE ENGINE PLATE INSIDE NATU | 1 PC |
| UTE 870811 | ALU PROFILE 30X20X3 ANODIZED NATURE | 1 MT |
| UTE 870840 | ENGINE PLATE OUTSIDE 022 | 1 PC |



| | | | |
|------------|--|--|------|
| | | | 1 PC |
| UTE 871771 | CABLE BUSHING FOR BOOT 140 MM OUTSIDE | | 1 PC |
| UTE 874146 | GUNNEL RUBBER 754 11,5 M SILVER A51/A5 | | 1 PC |
| UTE 873380 | GUNNEL FITTINGS SILVER-GREY | | 2 PC |
| UTE 870903 | THRU HULL FITTINGS 65 MM COPPER | | 1 PC |
| UTE 874281 | BOARDING LADDER TELESCOPE | | 1 PC |
| UTE 871642 | ANTI-SYPHONING VALVE SELF-BAILING DEVICE | | 1 PC |

Uttern C56 model year 2007

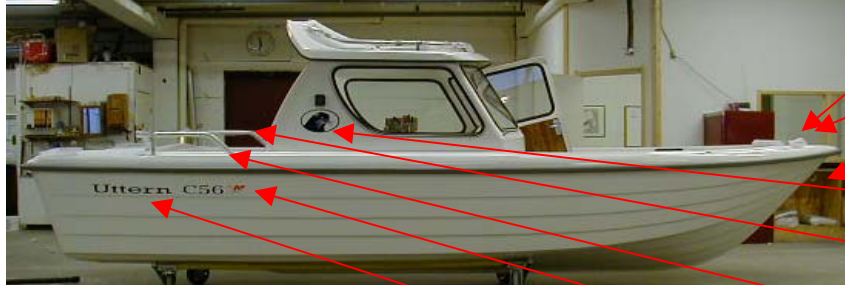
Fore



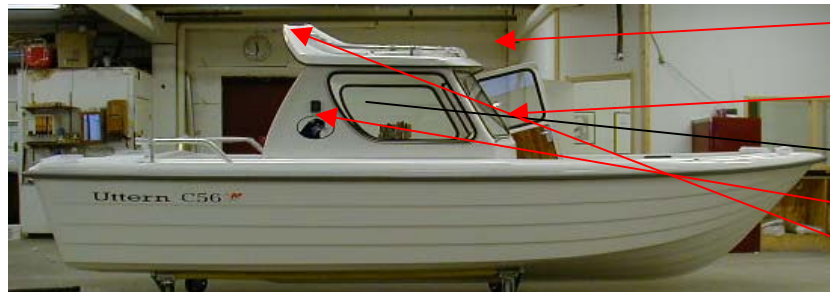
- | | | |
|------------|-----------------------------|-----------|
| UTE 873452 | DECAL UTTERN HEAD BLUE BIG | 1 PC |
| UTE 871757 | HANDLE INSIDE BLACK/PLASTIC | 6 PC/BOAT |
| UTE 874156 | HATCH IN FRONT A51/A56/C56 | 1 PC |
| UTE 872682 | PADLOCK SS LONG | 1 PC |
| UTE 873906 | Folding seat A51/A56/C56 | 1 PC |
| UTE 873981 | BAILING PUMP 440 MM | 1 PC |

Uttern C56 model year 2007

Starbord side



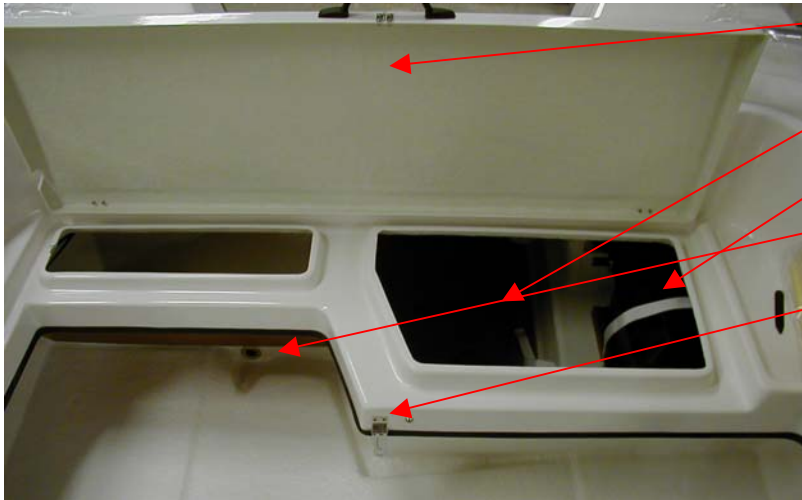
- UTE 873462 CLEAT 150X45 MM 4 PC/BOAT
- UTE 873705 FRONT RAIL A51/A56 PORT 1 PC
- UTE 873469 BOWEYE CLASS 3 12 MM LOCK NUT 1 PC
- UTE 873498 DECAL UTTERN HEAD BLUE VERY BIG 3 PC/BOAT
- UTE 874160 AFT RAIL C56 PORT 1 PC
- UTE 874159 AFT RAIL C56 S/B 1 PC
- UTE 873539 DECAL "BY M" LARGE MODEL 2 PC
- UTE 874165 DECAL "UTTERN C56" BLUE 2 PC



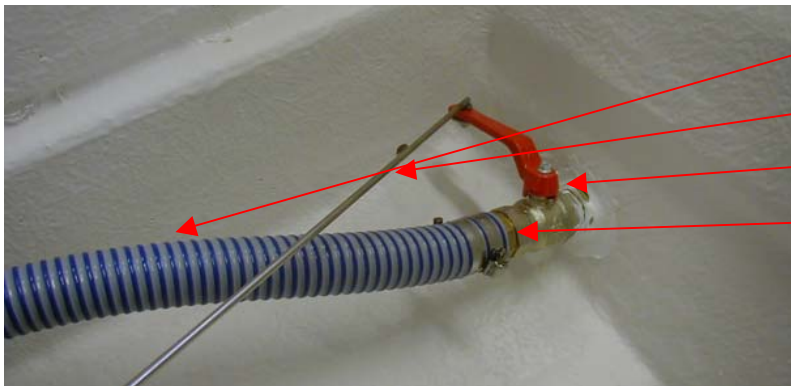
- UTE 874161 ROOF RAIL C56 (PAIR) 1 PAIR
- UTE 874162 WINSHIELDS C56 (SET) 1 SET
- UTE 871206 NAVIGATION LIGHT 7M PORT RED 1 PC
- UTE 871211 NAVIGATION LIGHT 7M S/B GREEN 1 PC
- UTE 871209 ALL-ROUND POLE LIGHT 7M SHORT (not in picture) 1 PC

Uttern C56 model year 2007

Seats aft



| | | |
|------------|------------------------------|------|
| UTE 874151 | AFT HATCH A56/C56 | 1 PC |
| UTE 870602 | TANK STRAP 1,5 M | 2 PC |
| UTE 871650 | BATTERY BOX | 1 PC |
| UTE 871612 | THRU HULL FITTINGS 1" CONVEX | 2 PC |
| UTE 872682 | PADLOCK SS LONG | 1 PC |



| | | |
|------------|------------------------------|------|
| UTE 872178 | HOSE 32 MM SELF BAILING | 1 PC |
| UTE 874154 | LEVER SHUT OFF VALVE A51/A56 | 1 PC |
| UTE 871622 | SHUT OFF VALVE 1" | 1 PC |
| UTE 871632 | HOSE ADAPTER 1" 32 MM HOSE | 2 PC |

Additional information

Documents

| | | |
|------------------|--------------------------------------|-------------|
| UTE 871559 | DECAL SET ALU-COLOURED W.BLACK PRINT | 1 PC |
| UTE 870547 | FOLDER WITH ZIPPER | 1 PC |
| UTE 873262 | USER MANUAL SWEDISH | 1 PC |
| Q/S 88285513U | POLY BOAT OG SUP UTTERN | 1 PC |
| Q/S 8828553WU | UTTERN WARRANTY SUPPLEMENT | 1 PC |
| Q/S 83004243 | WARRANTY CARD | 1 PC |
| UTE D9051 | ACCESSORY BAG COMPLETE | 1 PC |
| UTE 871695 | FENDER 15x51 CM | 4PS |
| UTE 871215 | ANCHOR 5,5 KG | 1 PC |
| UTE 871223 | ANCHOR ROPE 30MX10MM | 1 PC |
| UTE 871229 | MOORING ROPE 4MX12MM | 1 PC |
| UTE 871230 | MOORING ROPE 10MX12MM | 1 PC |
| UTE 872011 | OAR SHANK (PAIR) | 2 PC |
| UTE 872007 | ROWLOCK ALUMINIUM WITH BOLT | 2 PC |
| UTE 872683 | BAILER | 1 PC |
| UTE 871955 | ACCESSORY BAG | 1 PC |
| UTE 873980 | OARS 8,5 FT (260 CM) | 1 PAIR |
| Q/S 859065A3 | TANK-FUEL-6.6 GAL | 1 PC |