

Uttern A56 model year 2005

Parts catalogue



Revision history

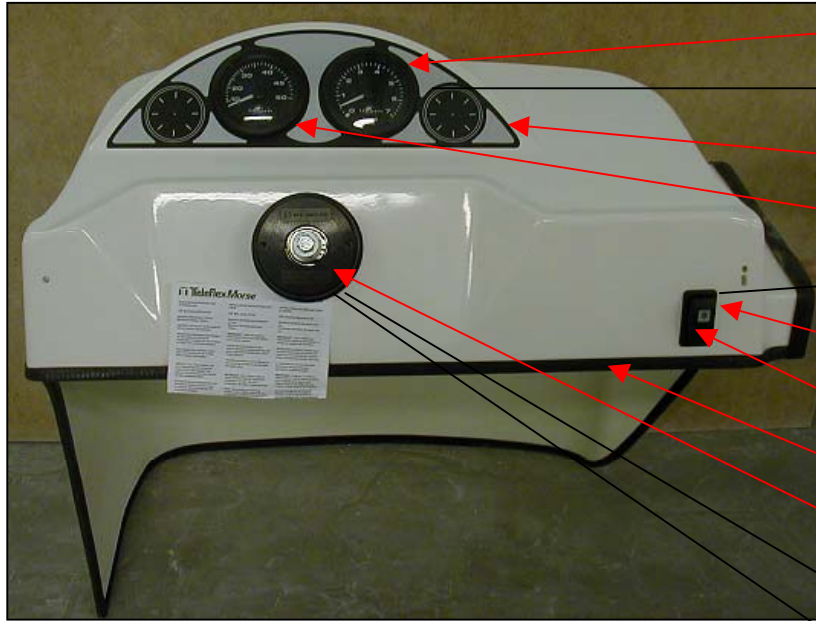
2003-12-12 First release

2004-12-23 Update for 2005 ready



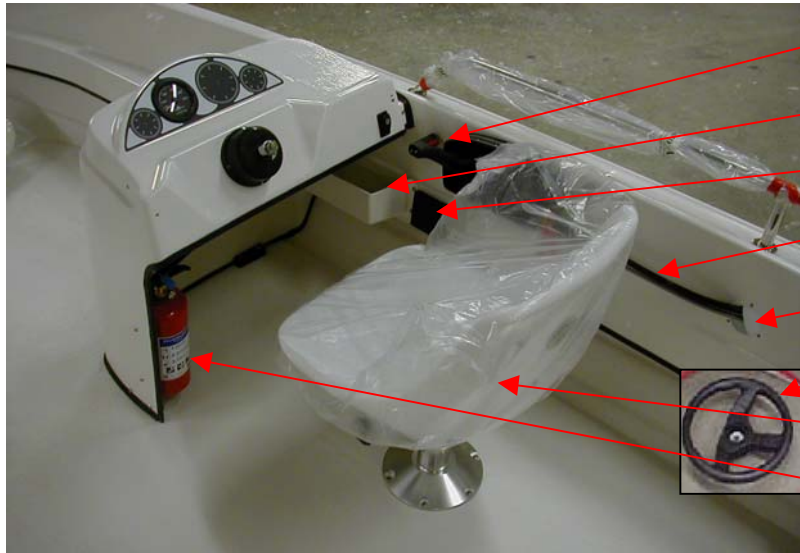
Uttern A56 model year 2005

Steering panel

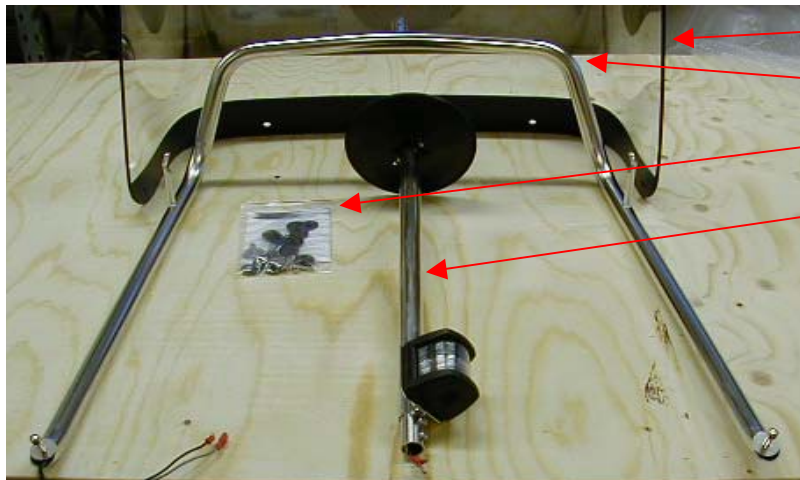


- | | | |
|-------------|-------------------------------|------|
| UTE 873422 | TACHOMETER BLACK/BLACK | 1 PC |
| Q/S 86396A8 | HARNES KIT | 1 PC |
| UTE 874150 | DECAL A51/A56/C56 STEERING CO | 1 PC |
| UTE 873421 | SPEEDOMETER BLACKBLACK | 1 PC |
| UTE 871336 | MAIN SWITCH ON-OFF WITHOUT P | 1 PC |
| UTE 871343 | FRAME FOR EL. PANEL SINGEL | 1 PC |
| UTE 871339 | SWITCH NAVIGATION LIGHTS | 1 PC |
| UTE 872148 | U-TRIM BLACK | |
| UTE 874488 | STEERING HELM QC SAFE-T | 1 PC |
| UTE 874489 | BEXEL QC SAFE-T | 1 PC |
| UTE 874490 | STEERING CABLE 3,96 M (13 FT) | 1 PC |





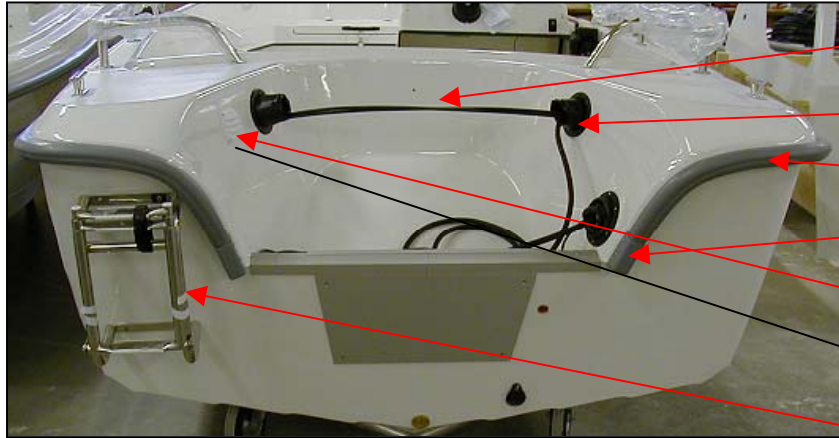
- Q/S 16900A15 REMOTE CONTROL WITH POWER1 1 PC
- UTE 874152 GLOVE LOCKER A51/A56/C56 1 PC
- UTE 874153 DRINK HOLDER A51,A56,C56 1 PC
- Q/S 808630A11IGNITION SWITCH 2 PC
- UTE 871773 CABLE BUSHING WHITE 87 MM PL, 1 PC
- UTE 870752 STEERING WHEEL SOFT V38 BLAC 1 PC
- UTE 873813 DRIVER SEAT A51/A56/C56 1 PC
- UTE 871671 FIRE EXTINGUISHER 2 KG 1 PC



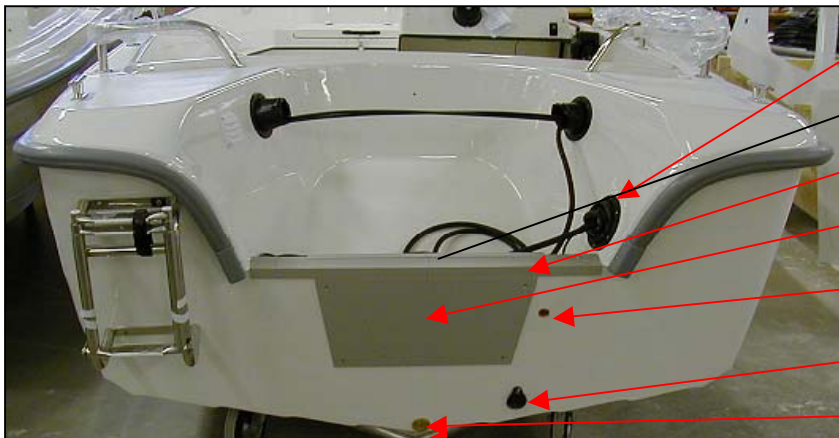
- UTE 873518 WINDSHIELD A43/A46/R51 1 PC
- UTE 873517 GRAB RAILSS WINDSHIELD WITH 1 PC
- UTE 874155 MOUNTING KIT WINDSHIELD 2002 1 PC
- UTE 873551 POLE LIGHT 2002 1 PC

Uttern A56 model year 2005

Aft



- UTE 871405 CE-PLATE UTTERN 1 PC
- ej i bild
- UTE 871770 CABLE BUSHING FOR BOOT HOP1 2 PC
- UTE 874146 GUNNEL RUBBER 754 11,5 M SILVE 1 PC
- UTE 873380 GUNNEL FITTINGS SILVER-GREY 2 PC
- UTE 872002 LOUVER WITH ADAP. 90X90 WHITE 1 PC
- UTE 872182 HOSE 75 MM GREY 6 M 1 MT
- UTE 874281 BOARDING LADDER TELESCOPE 1 PC

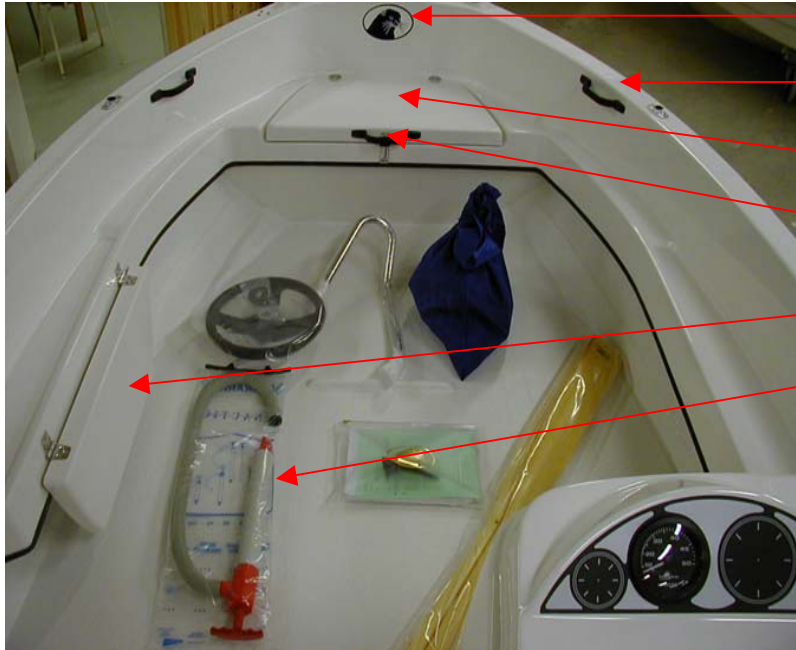


- UTE 871771 CABLE BUSHING FOR BOOT 140 M 1 PC
- UTE 870819 ALU PROFILE ENGINE PLATE INS 1 PC
- UTE 870811 ALU PROFILE 30X20X3 ANODIZED 1 MT
- UTE 870840 ENGINE PLATE OUTSIDE 022 1 PC
- UTE 870903 THRU HULL FITTINGS 65 MM COPF 1 PC
- UTE 871642 ANTI-SYPHONE VALVE SELF-BAILI 1 PC
- UTE 873283 DRAINING PLUG NR 501 1 PC
- UTE 871682 PLUG FOR DRAIN BRASS @5 1 PC



Uttern A56 model year 2005

Fore

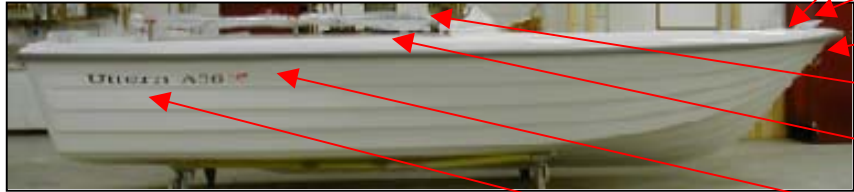


- | | | |
|------------|-----------------------------|----------|
| UTE 873452 | DECAL UTTERN HEAD BLUE BIG | 1 PC |
| UTE 871757 | HANDLE INSIDE BLACK/PLASTIC | 5PC/BOAT |
| UTE 874156 | HATCH IN FRONT A51/A56/C56 | 1 PC |
| UTE 872682 | PADLOCK SS LONG | 1 PC |
| UTE 873906 | FOLDING SEAT A51/A56/C56/R | 1 PC |
| UTE 873981 | BAILING PUMP 440 MM | 1 PC |



Uttern A56 model year 2005

Starbord side

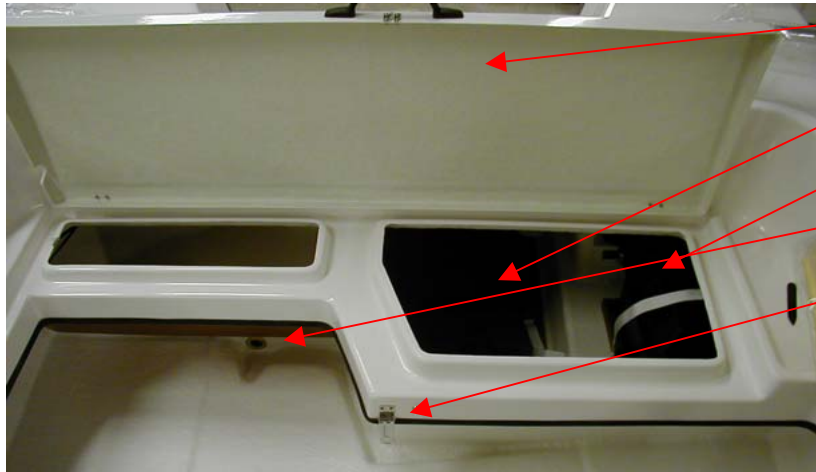


UTE 873462	CLEAT 150X45 MM	4 PC
UTE 873705	FRONT RAIL A51/A56 PORT	1 PC
UTE 873469	BOWEYE CLASS 3 12 MM LOCK NL	1 PC
UTE 874158	AFT RAIL A56 PORT	1 PC
UTE 874157	AFT RAIL A56 S/B	1 PC
UTE 873539	DECAL "BY M" LARGE MODEL	2 PC
UTE 873471	DECALE "UTTERN A56" BLUE	2 PC

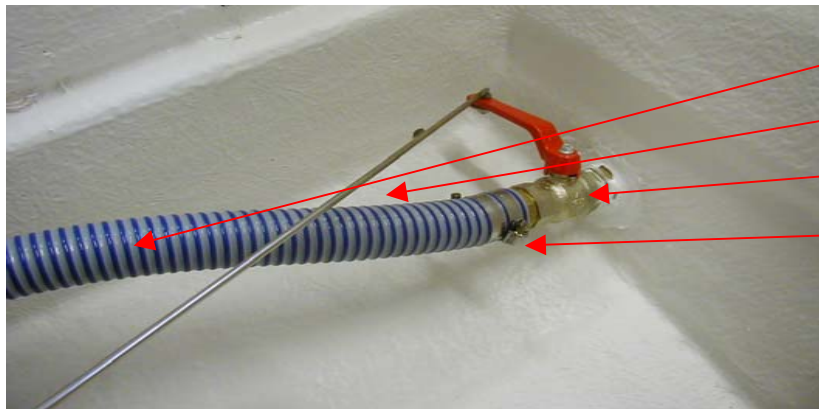


Uttern A56 model year 2005

Seats aft



UTE 874151	AFT HATCH A56/C56	1 PC
UTE 870602	TANK STRAP 1,5 M	2 PC
UTE 871650	BATTERY BOX	1 PC
UTE 871612	THRU HULL FITTINGS 1" CONVEX	2 PC
UTE 872682	PADLOCK SS LONG	1 PC



UTE 872178	HOSE 32 MM SELF BAILING	1 PC
UTE 874154	LEVER SHUT OFF VALVE A51/A56/I	1 PC
UTE 871622	SHUT OFF VALVE 1"	1 PC
UTE 871632	HOSE ADAPTER 1" 32 MM HOSE	2 PC

Additional information

Documents

UTE 871559	DECAL SET ALU-COLOURED W.BLACK PRINT	1 PC
UTE 870547	FOLDER WITH ZIPPER	1 PC
UTE 873262	USER MANUAL SWEDISH	1 PC
Q/S 88285513U	POLY BOAT OG SUP UTTERN	1 PC
Q/S 8828553WU	UTTERN WARRANTY SUPPLEMENT	1 PC
Q/S 83004243	WARRANTY CARD	1 PC
UTE D9051	ACCESSORY BAG COMPLETE	1 PC
	Parts in bag:	
UTE 871215	ANCHOR 5,5 KG	1 PC
UTE 871223	ANCHOR ROPE 30MX10MM	1 PC
UTE 871229	MOORING ROPE 4MX12MM	1 PC
UTE 871230	MOORING ROPE 10MX12MM	1 PC
UTE 872011	OAR SHANK (PAIR)	2 PC
UTE 872007	ROWLOCK ALUMINIUM WITH BOLT	2 PC
UTE 872683	BAILER	1 PC
UTE 871955	ACCESSORY BAG	1 PC
UTE 873980	OARS 8,5 FT (260 CM)	1 PAIR
Q/S 859065A3	TANK-FUEL-6.6 GAL	1 PC

