

Uttern A51 model year 2007

Parts catalogue



Revision history

2003-12-12 First release

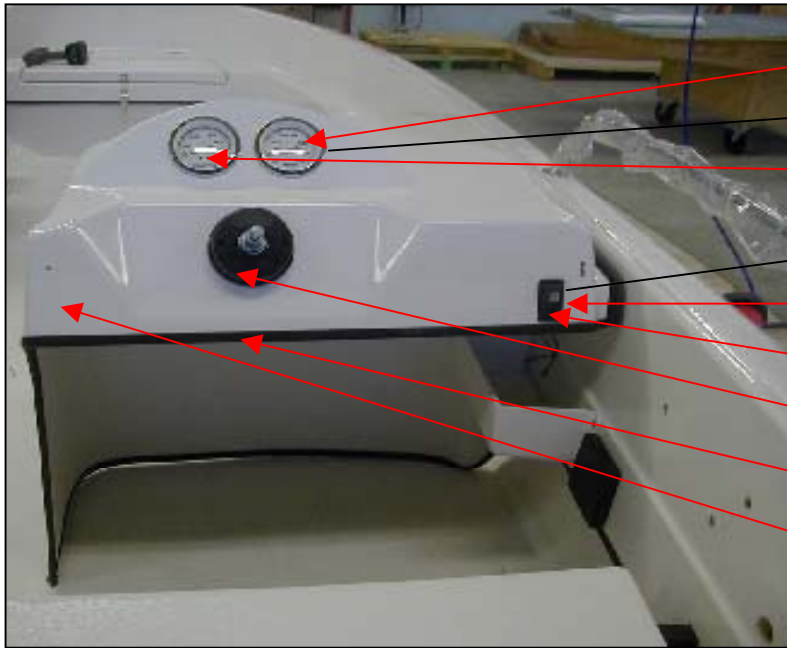
2004-12-23 Update for 2005 ready

2005-12-09 Update for 2006 ready

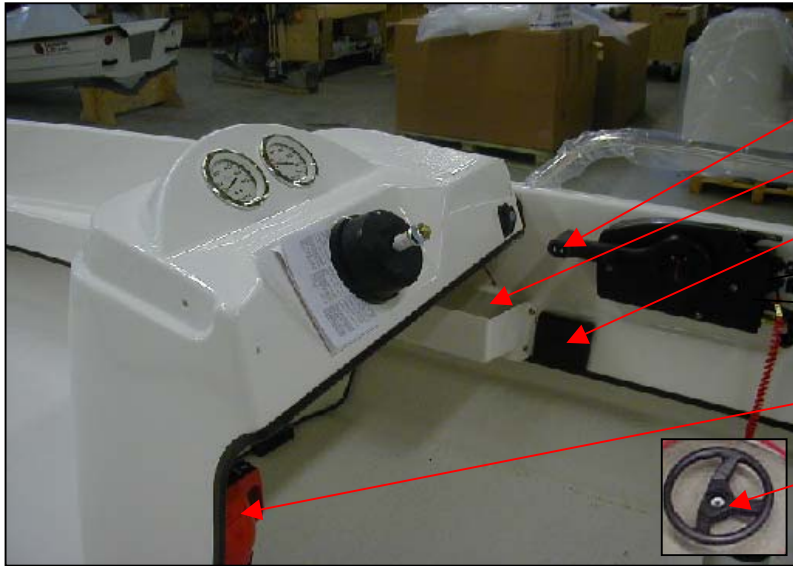
2007-02-02 Update for 2007 ready

Uttern A51 model year 2007

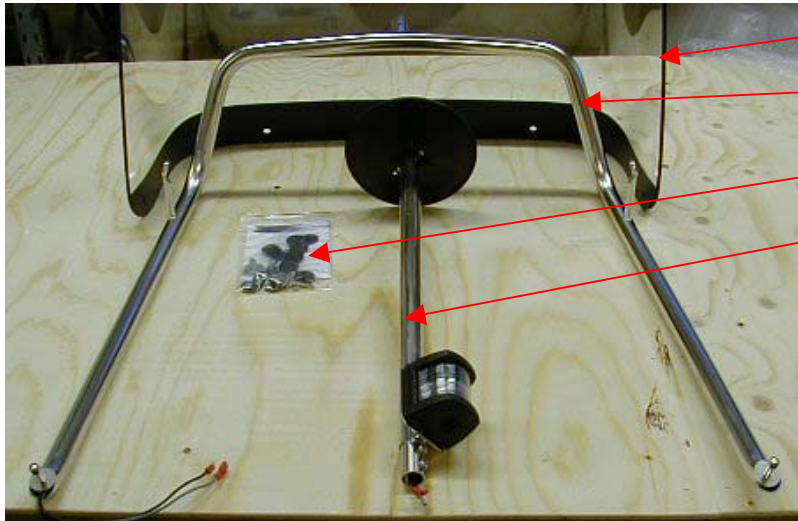
Steering panel



| | | |
|-------------|---|------|
| UTE 873301 | GAUGE-TACHOMETER CHROME/WHITE | 1 PC |
| Q/S 86396A8 | HARNESS KIT | 1 PC |
| UTE 873300 | GAUGE-SPEEDOMETER CHROME/WHITE | 1 PC |
| UTE 871336 | SWITCH ON-OFF | 1 PC |
| UTE 871343 | FRAME FOR EL. PANEL SINGEL | 1 PC |
| UTE 871339 | SWITCH NAVIGATION LIGHTS | 1 PC |
| UTE 870789 | STEERING HELM C230 | 1 PC |
| UTE 872148 | U-TRIM BLACK | |
| UTE 873488 | STEERING CONSOLE A2002 ONLY PLSTIC PART | 1 PC |



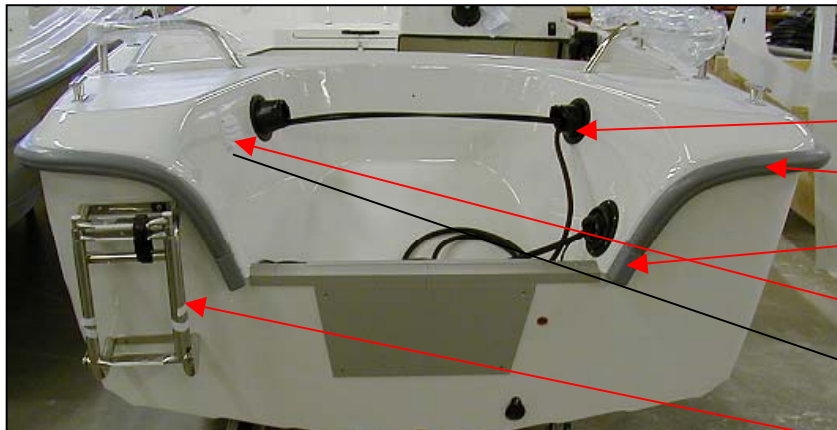
- Q/S 16900A15 REMOTE CONTROL WITH POWERTRIM 1 PC
- UTE 874152 GLOVE LOCKER A51/A56/C56 1 PC
- UTE 874153 DRINK HOLDER A51,A56,C56 1 PC
- Q/S 808630A9 CABLE ASSY 9 FT 1 PC
- UTE 871773 CABLE BUSHING WHITE 87 MM PLASTIC 1 PC
- UTE 871671 FIRE EXTINGUISHER 2 KG 1 PC
- UTE 870752 STEERING WHEEL SOFT V38 BLACK 1 PC



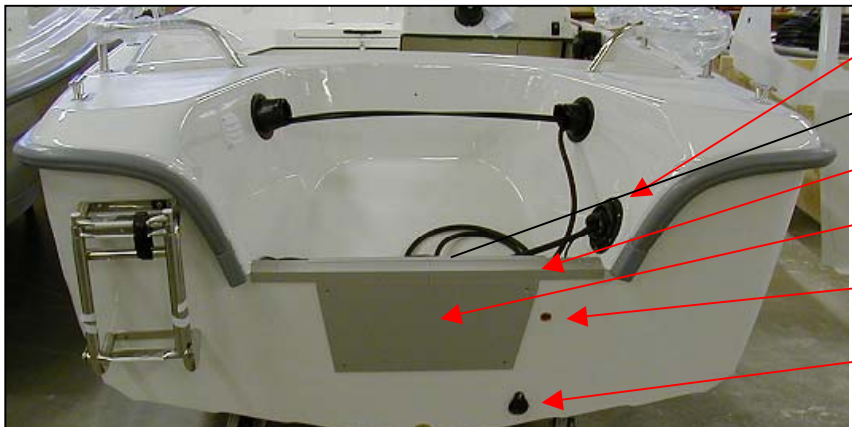
- UTE 873518 WINDSHIELD A43/A46/R51 1 PC
- UTE 873517 Windshield bow SS for 2002 model, incl nav pole 1 PC
- UTE 874155 MOUNTING KIT WINDSHIELD 2002 1 PC
- UTE 873551 POLE LIGHT 2002 1 PC

Uttern A51 model year 2007

Aft



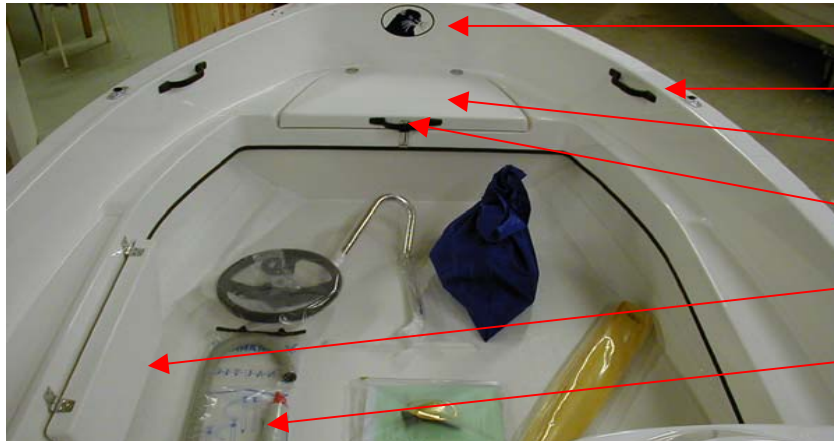
- UTE 871770 CABLE BUSHING FOR BOOT HOP100 MM 2 PC
- UTE 874146 GUNNEL RUBBER 754 11,5 M SILVER A51/A56 1 PC
- UTE 873380 GUNNEL FITTINGS SILVER-GREY 2 PC
- UTE 872002 LOUVER WITH ADAP. 90X90 WHITE 1 PC
- UTE 872182 HOSE 75 MM GREY 6 M 1 MT
- UTE 874281 BOARDING LADDER TELESCOPE 1 PC



- UTE 871771 CABLE BUSHING FOR BOOT 140 MM OUTSID 1 PC
- UTE 870819 ALU PROFILE ENGINE PLATE INSIDE NATUF 1 PC
- UTE 870811 ALU PROFILE 30X20X3 ANODIZED NATURE 1 1 MT
- UTE 870840 ENGINE PLATE OUTSIDE 022 1 PC
- UTE 870903 THRU HULL FITTINGS 65 MM COPPER 1 PC
- UTE 871642 ANTI-SYPHONE VALVE SELF-BAILING DEVICI 1 PC

Uttern A51 model year 2007

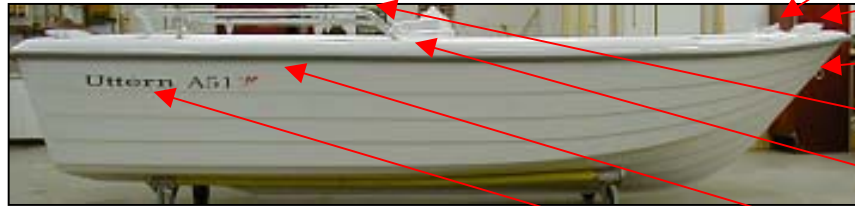
Fore



- | | | |
|------------|-----------------------------|----------|
| UTE 873452 | DECAL UTTERN HEAD BLUE BIG | 1 PC |
| UTE 871757 | HANDLE INSIDE BLACK/PLASTIC | 5PC/BOAT |
| UTE 874156 | HATCH IN FRONT A51/A56/C56 | 1 PC |
| UTE 872682 | PADLOCK SS LONG | 1 PC |
| UTE 873906 | Folding seat A51/A56/C56 | 1 PC |
| UTE 873981 | BAILING PUMP 440 MM | 1 PC |

Uttern A51 model year 2007

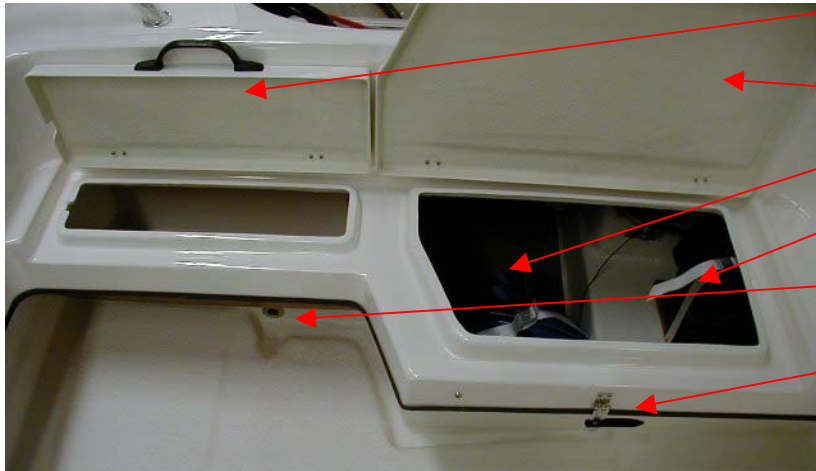
Starbord side



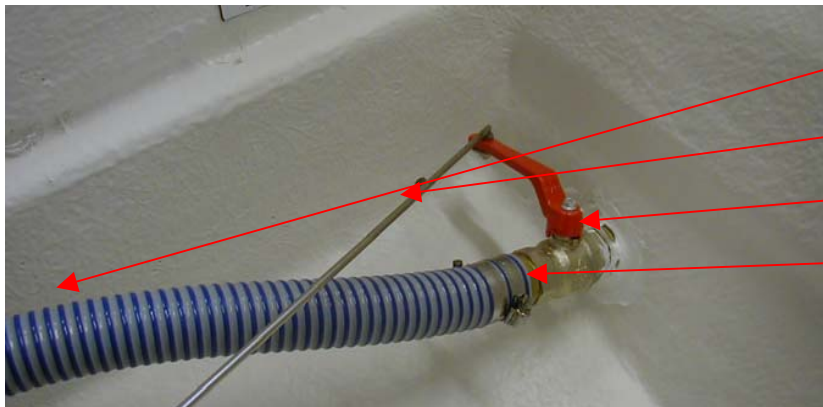
- | | | |
|------------|-----------------------------|------|
| UTE 873462 | CLEAT 150X45 MM | 4 PC |
| UTE 873705 | FRONT RAIL A51/A56 PORT | 1 PC |
| UTE 873469 | BOWEYE CLASS 3 12 MM LOCK N | 1 PC |
| UTE 873701 | AFT RAIL A51 PORT | 1 PC |
| UTE 873700 | AFT RAIL A51 S/B | 1 PC |
| UTE 873539 | DECAL "BY M" LARGE MODEL | 2 PC |
| UTE 873470 | DECALE "UTTERN A51" BLUE | 2 PC |

Uttern A51 model year 2007

Seats aft



| | | |
|------------|------------------------------|------|
| UTE 874148 | ANCHOR HATCH A51 S/B | 1 PC |
| UTE 874149 | AFT HATCH A51 | 1 PC |
| UTE 870602 | TANK STRAP 1,5 M | 2 PC |
| UTE 871650 | BATTERY BOX | 1 PC |
| UTE 871612 | THRU HULL FITTINGS 1" CONVEX | 2 PC |
| UTE 872682 | PADLOCK SS LONG | 1 PC |



| | | |
|------------|------------------------------|------|
| UTE 872178 | HOSE 32 MM SELF BAILING | 1 MT |
| UTE 874154 | LEVER SHUT OFF VALVE A51/A56 | 1 PC |
| UTE 871622 | SHUT OFF VALVE 1" | 1 PC |
| UTE 871632 | HOSE ADAPTER 1" 32 MM HOSE | 2 PC |

Additional information

Documents

| | | |
|------------------|--------------------------------------|-------------|
| UTE 871559 | DECAL SET ALU-COLOURED W.BLACK PRINT | 1 PC |
| UTE 870547 | FOLDER WITH ZIPPER | 1 PC |
| UTE 873262 | USER MANUAL SWEDISH | 1 PC |
| Q/S 88285513U | POLY BOAT OG SUP UTTERN | 1 PC |
| Q/S 8828553WU | UTTERN WARRANTY SUPPLEMENT | 1 PC |
| Q/S 83004243 | WARRANTY CARD | 1 PC |
| UTE D9051 | ACCESSORY BAG COMPLETE | 1 PC |
| | Parts in bag: | |
| UTE 871215 | ANCHOR 5,5 KG | 1 PC |
| UTE 871223 | ANCHOR ROPE 30MX10MM | 1 PC |
| UTE 871229 | MOORING ROPE 4MX12MM | 1 PC |
| UTE 871230 | MOORING ROPE 10MX12MM | 1 PC |
| UTE 872011 | OAR SHANK (PAIR) | 2 PC |
| UTE 872007 | ROWLOCK ALUMINIUM WITH BOLT | 2 PC |
| UTE 872683 | BAILER | 1 PC |
| UTE 871955 | ACCESSORY BAG | 1 PC |
| UTE 873980 | OARS 8,5 FT (260 CM) | 1 PAIR |
| Q/S 859065A3 | TANK-FUEL-6.6 GAL | 1 PC |