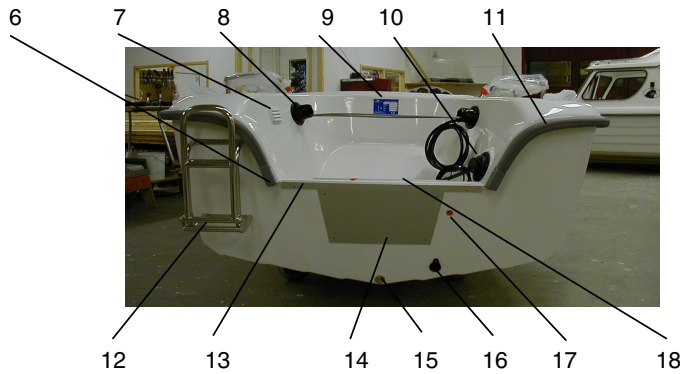




UTTERN 51
2003 Part catalog

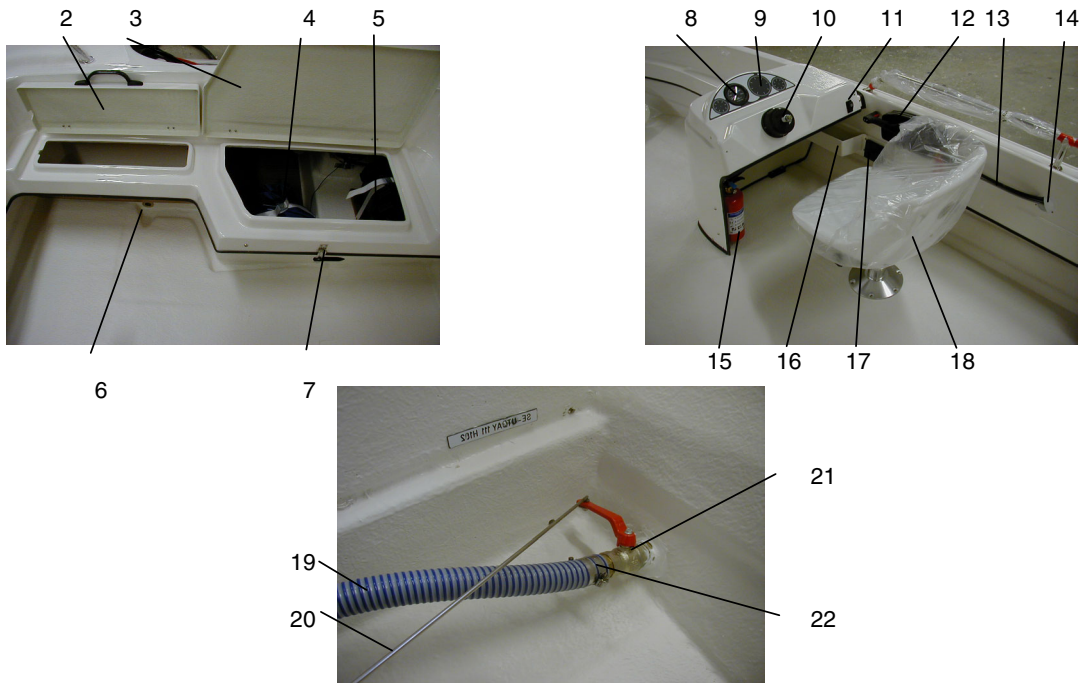


UTTERN A 51
MODEL YEAR 2003



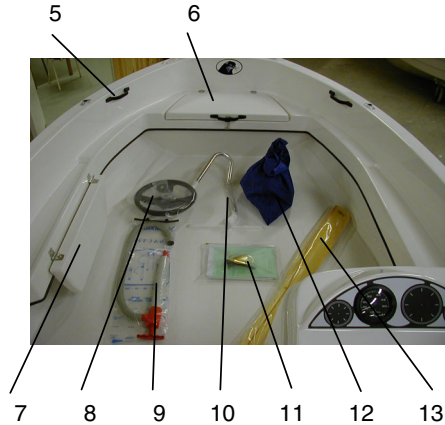
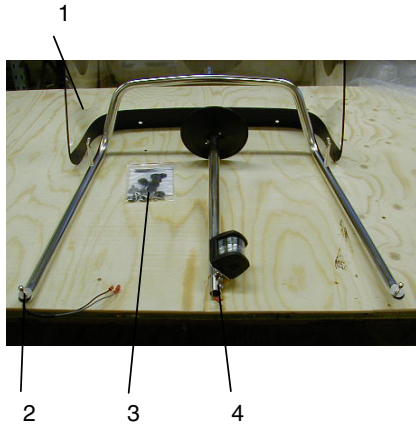
| <u>Item</u> | <u>Part Number</u> | <u>Description</u> | <u>Qty/ boat</u> | |
|-------------|--------------------|----------------------------|------------------|----|
| 1 | UTE-873462 | CLEAT SS SMALL | 4 | PC |
| 2 | UTE-873700 | RAIL AFT S/B | 1 | PC |
| 2 | UTE-873701 | RAIL AFT PORT | 1 | PC |
| 3 | UTE-873469 | BOWEYE SS CLASS 3 | 1 | PC |
| 4 | UTE-873470 | DECAL "UTTERN A51" | 2 | PC |
| 5 | Q/S-8322581 | DECAL "BY M" | 2 | PC |
| 6 | UTE-873380 | GUNNEL FITTING SILVER | 2 | PC |
| 7 | UTE-872002 | LOUVERED VENT WITH ADAPTER | 1 | PC |
| 7 | UTE-872102 | HOSE 72 MM | 1 | MT |
| 8 | UTE-871770 | BOOT WITH TIE STRAP | 2 | PC |
| 9 | UTE-871405 | CE-PLATE UTTERN | 1 | PC |
| 10 | UTE-871771 | BOOT RUBBER | 1 | PC |
| 11 | UTE-874146 | GUNNEL RUBBER | 1 | PC |
| 12 | UTE-874147 | BOARDING LADDER + DISTANS | 1 | PC |
| 13 | UTE-870811 | ALU PROFILE 30X20 | 1 | MT |
| 14 | UTE-870840 | ENGINE PLATE | 1 | PC |
| 15 | UTE-871682 | PLUGG FOR DRAIN BRASS | 1 | PC |
| 16 | UTE-871642 | ANTI-SYPHONE | 1 | PC |
| 17 | UTE-870903 | CUPPER-DRAIN SLEEVE | 1 | PC |
| 18 | UTE-870819 | ALU PROFILE ENGINE | 1 | PC |

UTTERN A 51
MODEL YEAR 2003



| <u>Item</u> | <u>Part Number</u> | <u>Description</u> | <u>Qty/ boat</u> |
|-------------|--------------------|----------------------|------------------|
| 2 | UTE-874148 | LID ANCOR | 1 PC |
| 3 | UTE-874149 | AFT LID | 1 PC |
| 4 | UTE-870602 | TANK STRAP | 2 PC |
| 5 | UTE-871650 | BATTERY BOX | 1 PC |
| 6 | UTE-871612 | THRU-HULL FITTING | 2 PC |
| 7 | UTE-872682 | LOCK | 2 PC |
| 8 | UTE-873421 | SPEEDOMETER | 1 PC |
| 9 | UTE-874150 | DECAL | 1 PC |
| 10 | UTE-870789 | HELM | 1 PC |
| 11 | UTE-871336 | SWITCH MAIN ON-OFF | 1 PC |
| 11 | UTE-871343 | SWITCH FRAME | 1 PC |
| 11 | UTE-871339 | SWITCH NAV.LIGHT | 1 PC |
| 12 | Q/S-16900A15 | REMOTE CONTROL | 1 PC |
| 13 | Q/S-808630A9 | CABLE 9 FEET | 2 PC |
| 14 | UTE-871773 | FLUSH HANDLE WHITE | 1 PC |
| 15 | UTE-871671 | FIRE EXTINGUISHER | 1 PC |
| 16 | UTE-874152 | GLOVE COMPARTMENT | 1 PC |
| 17 | UTE-874153 | CUP HOLDER | 1 PC |
| 18 | UTE-873813 | DRIVER SEAT COMPL. | 1 PC |
| 19 | UTE-872178 | HOSE 32 MM BLUE | 1 MT |
| 20 | UTE-874154 | LEVER SHUT OFF VALVE | 1 PC |
| 21 | UTE-871622 | SHUT OFF VALVE 1" | 1 PC |
| 22 | UTE-871632 | HOSE ADAPTER 1" | 2 PC |





| <u>Item</u> | <u>Part Number</u> | <u>Description</u> | <u>Qty/ boat</u> |
|-------------|--------------------|---------------------------|------------------|
| 1 | UTE-873518 | WINDSHIELD | 1 PC |
| 2 | UTE-873517 | GRAB RAIL WINDSHILD | 1 PC |
| 3 | UTE-874155 | WINDSHIELD MOUNT KIT | 1 PC |
| 4 | UTE-873551 | NAV.POLE | 1 PC |
| 5 | UTE-871757 | GRAB HANDLE | 5 PC |
| 6 | UTE-874156 | LID | 1 PC |
| 7 | UTE-873906 | FOLDING SEAT COMPL. | 1 PC |
| 8 | UTE-870752 | STEERING WEEL | 1 PC |
| 9 | UTE-873981 | BAILING PUMP | 1 PC |
| 10 | UTE-873705 | BOW RAIL BB | 1 PC |
| 11 | UTE-873262 | OWNERS MANUEL | 1 PC |
| 11 | Q/S-88285513U | DECLARATION OF CONFORMITE | 1 PC |
| 11 | Q/S-8828553WU | WARRANTY MANUAL | 1 PC |
| 11 | Q/S-83004243 | WARRANTY CARD | 1 PC |
| 12 | UTE-D9051 | ACCESSORIES BAG B | 1 PC |
| 13 | UTE-873980 | OARS 8,5 FOOT | 1 PAIR |

ACCESSORIES BAG B:

| | | | |
|--|------------|--------------------|------|
| | UTE-871215 | ANCHOR 5,5 KG | 1 PC |
| | UTE-871223 | ANCHOR ROPE 30 MT | 1 PC |
| | UTE-871229 | MOORING ROPE 4 MT | 1 PC |
| | UTE-871230 | MOORING ROPE 10 MT | 1 PC |
| | UTE-872011 | OAR SHANK | 2 PC |
| | UTE-872007 | ROWLOCK HORN | 2 PC |
| | UTE-872683 | BAILER | 1 PC |
| | UTE-871955 | BAG | 1 PC |